

# 1010 SLIDING MALL FRONT

---

<b>ELEVATIONS/VERTICAL SECTION DETAILS</b> .....	<b>2</b>
<b>HORIZONTAL SECTION DETAILS</b> .....	<b>3</b>
<b>SCREENS – SECTION DIMENSIONS</b> .....	<b>4</b>
<b>SIZE LIMITATIONS</b> .....	<b>5</b>
<b>GENERAL INFORMATION</b> .....	<b>5</b>
<b>HARDWARE</b> .....	<b>6</b>

LAWS AND BUILDING AND SAFETY CODES GOVERNING THE DESIGN AND USE OF GLAZED ENTRANCE, WINDOW, AND CURTAIN WALL PRODUCTS VARY WIDELY. KAWNEER DOES NOT CONTROL THE SELECTION OF PRODUCT CONFIGURATIONS, OPERATING HARDWARE, OR GLAZING MATERIALS, AND ASSUMES NO RESPONSIBILITY THEREFOR.

Metric (SI) conversion figures are included throughout these details for reference. Numbers in parentheses ( ) are millimeters unless otherwise noted.

The following metric (SI) units are found in these details:

- m – meter
- cm – centimeter
- mm – millimeter
- s – second
- Pa – pascal
- MPa – megapascal

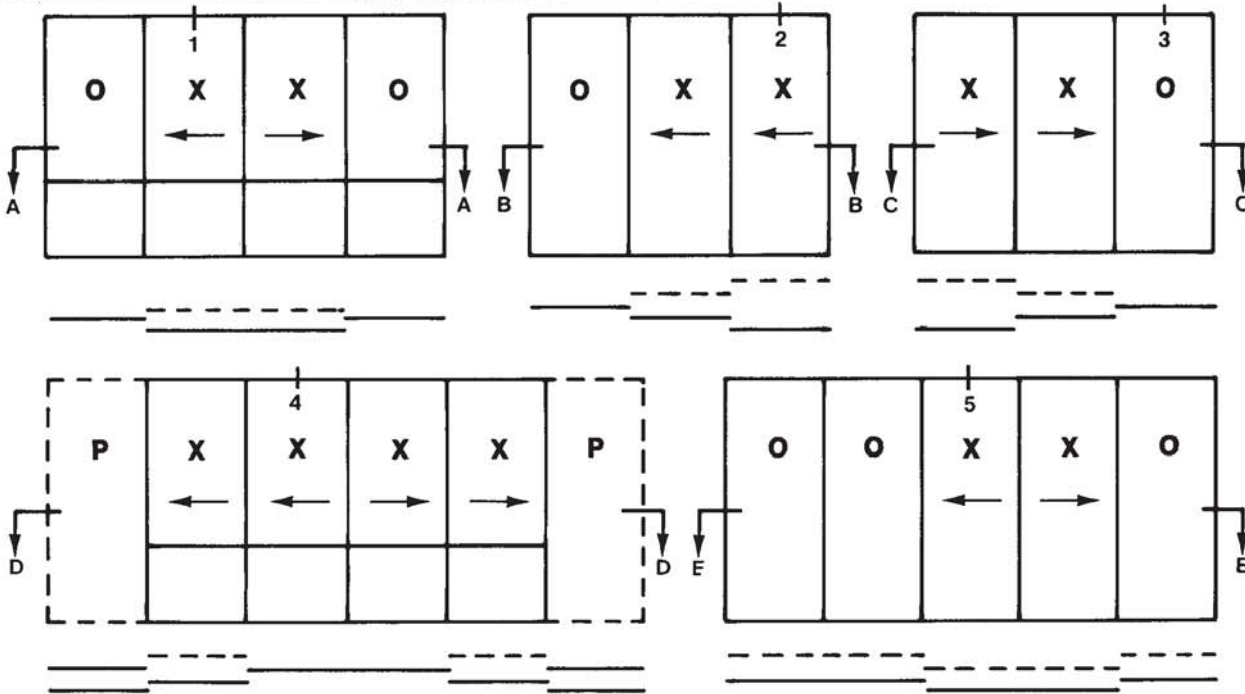
Kawneer reserves the right to change configurations without prior notice when deemed necessary for product improvement.

# 1010 SLIDING MALL FRONT ELEVATIONS/VERTICAL SECTION DETAILS

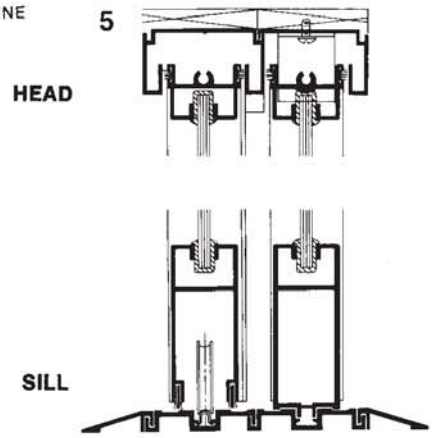
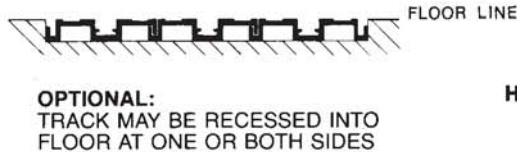
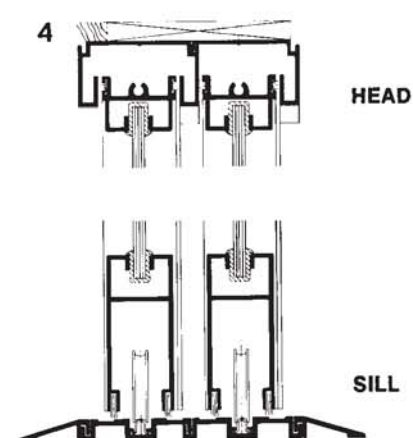
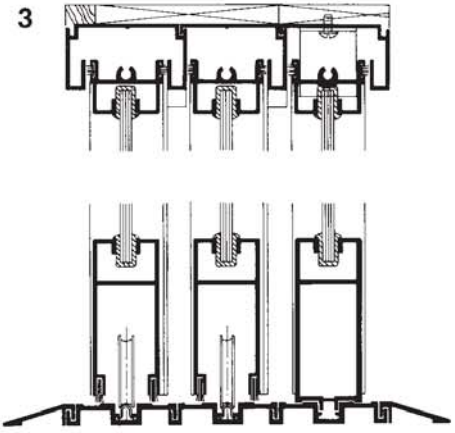
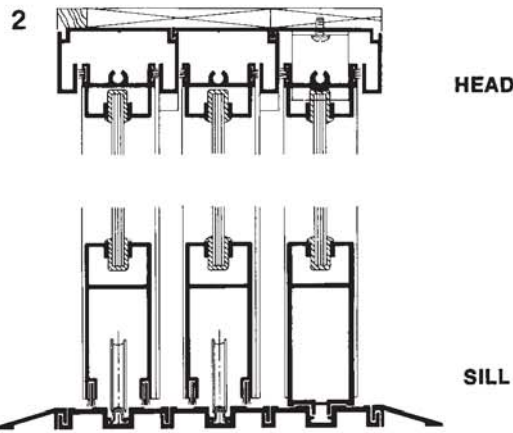
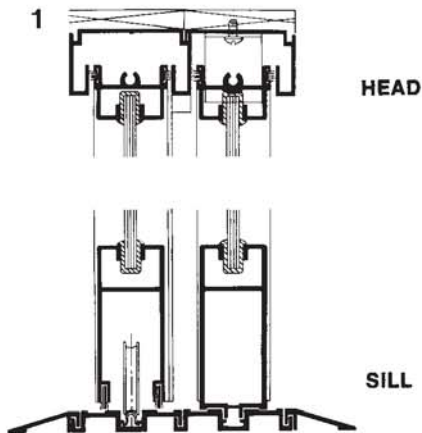
SCALE 3" = 1'-0"

NOTE: DOTTED LINES ON PLAN INDICATE OPTIONAL TRACK LAYOUT

OTHER CONFIGURATIONS AVAILABLE USING STANDARD COMPONENTS SHOWN.



ELEVATIONS KEYED TO DETAILS BELOW AND ON PAGE 3



NOTE: SEE PAGE 4 FOR TYPICAL SECTION DIMENSIONS.

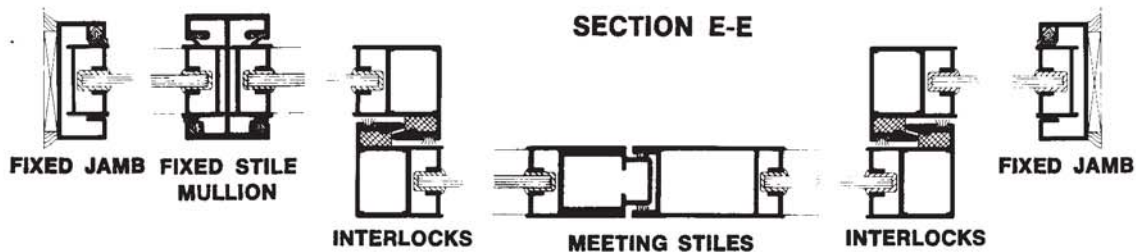
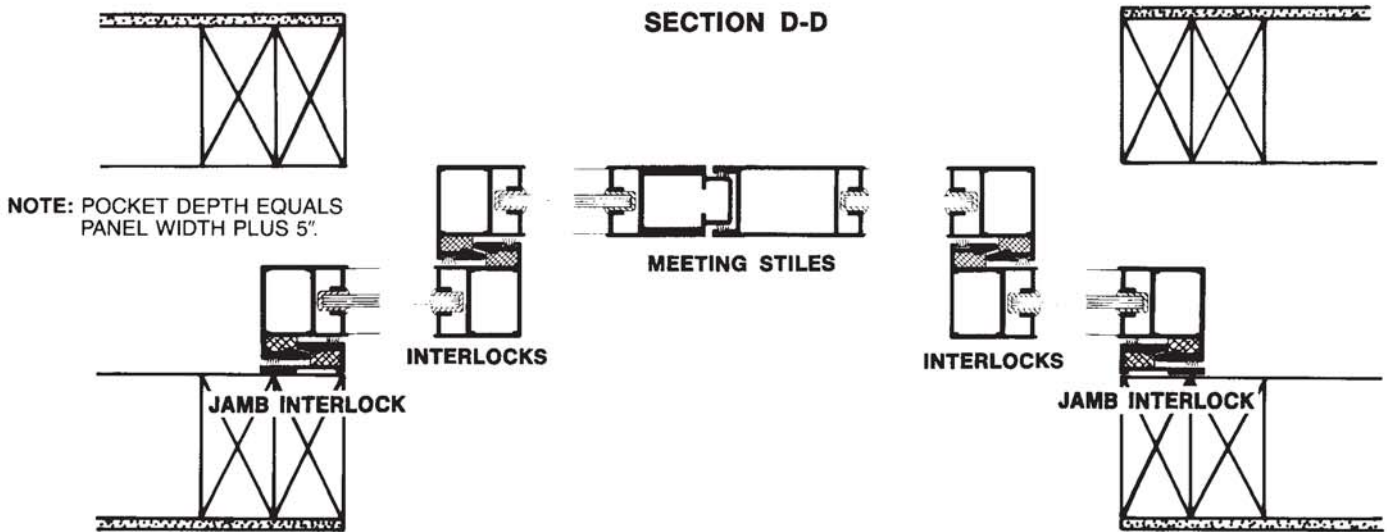
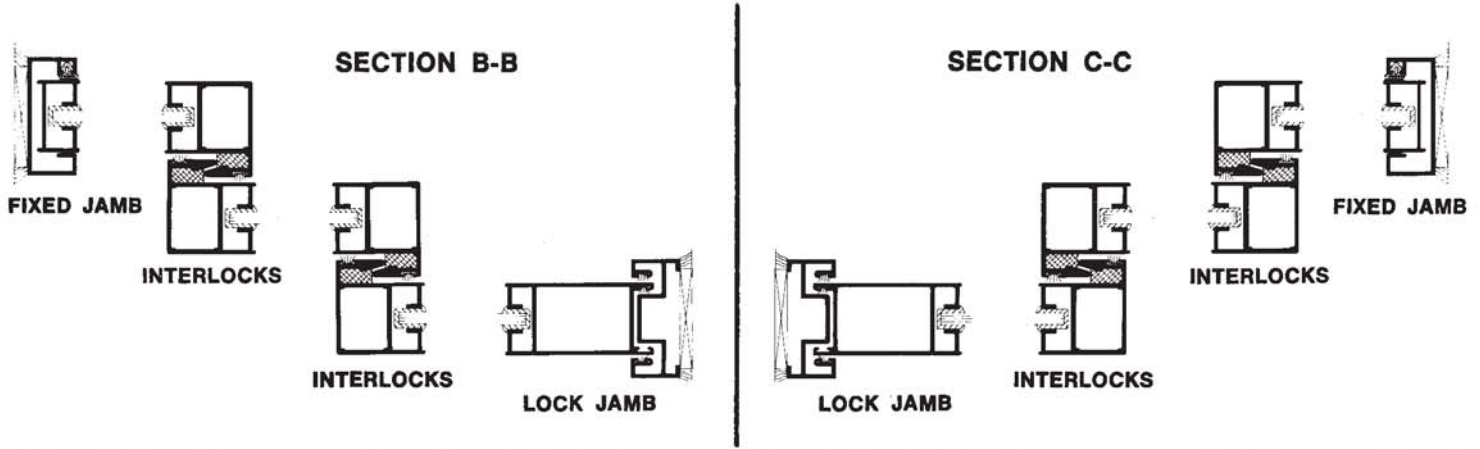
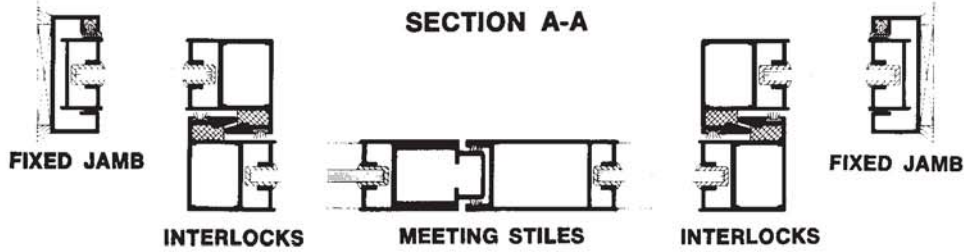
NOTE: PROPER SUPPORT MUST BE PROVIDED FOR FLOOR AND HEAD TRACK.

# 1010 SLIDING MALL FRONT

## HORIZONTAL SECTION DETAILS

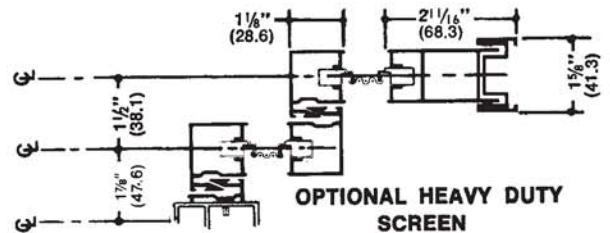
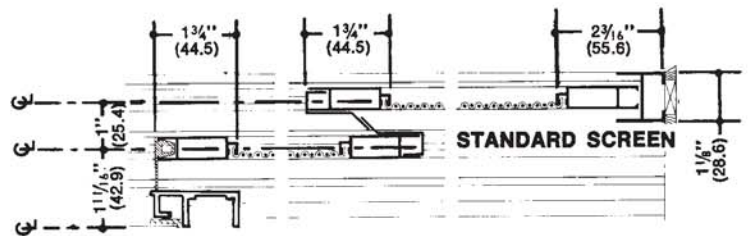
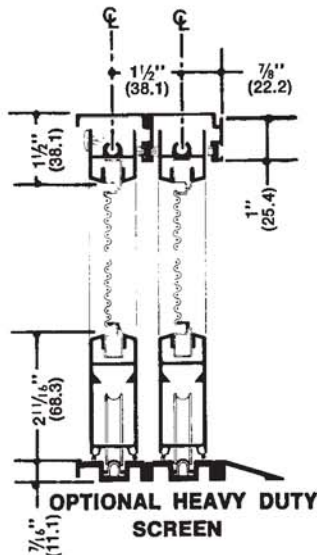
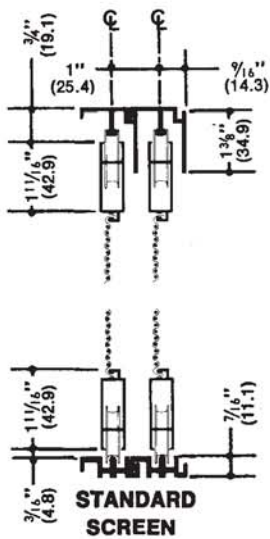
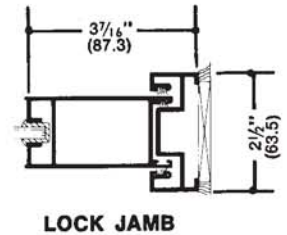
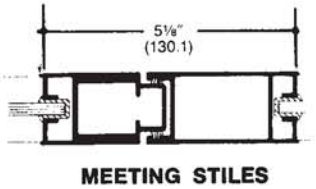
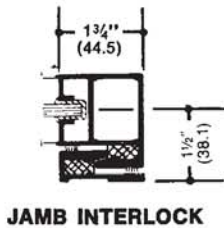
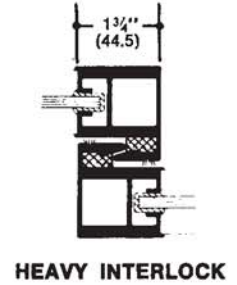
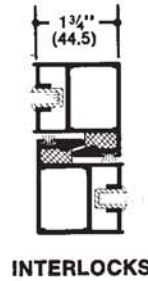
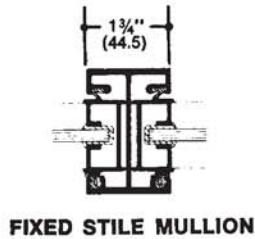
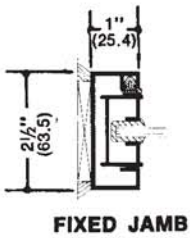
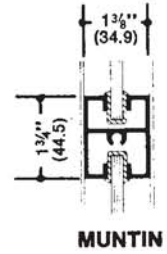
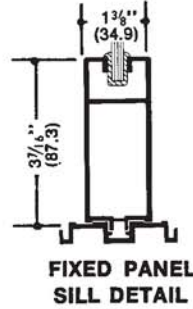
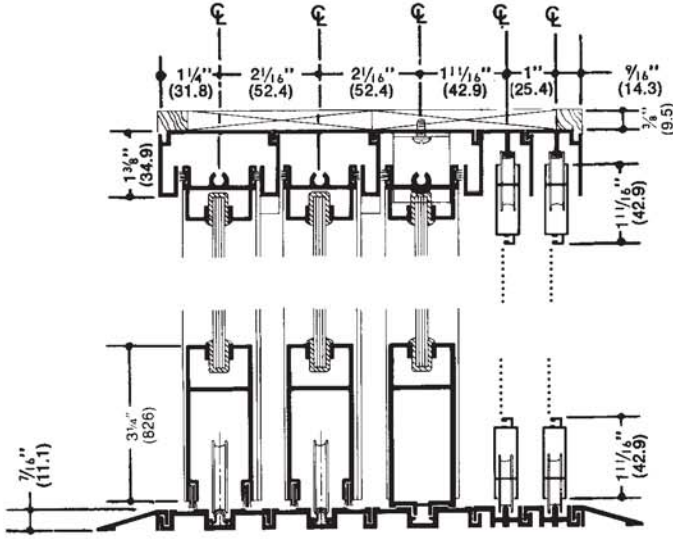
SCALE 3" = 1'-0"

NOTE: SEE PAGE 4 FOR TYPICAL SECTION DIMENSIONS



# 1010 SLIDING MALL FRONT SCREENS - SECTION DIMENSIONS

SCALE 3" = 1'-0"

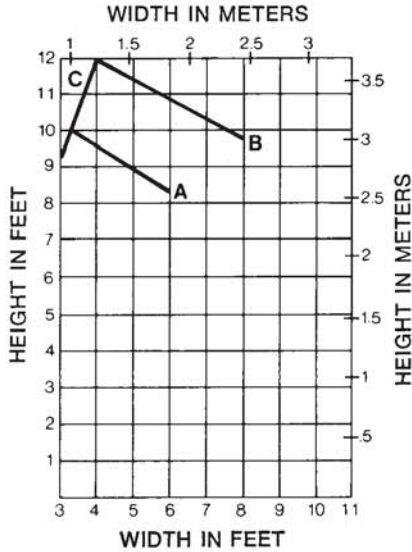




# 1010 SLIDING MALL FRONT

## SIZE LIMITATIONS/GENERAL INFORMATION

### MAXIMUM PANEL SIZE CHART INTERIOR APPLICATIONS ONLY



A Maximum panel size with standard interlocks (single glazing).

— AND —

Maximum panel size for double glazed units.

B Maximum panel size with heavy duty interlocks (single glazing).

c Panel width should be at least 1/3 panel height.

- GENERAL NOTES:** (1) ON PANELS OVER 10' IN HEIGHT AN INTERMEDIATE HORIZONTAL MUNTIN IS RECOMMENDED.  
(2) THIS IS NOT A WINDLOAD CHART FOR EXTERIOR APPLICATIONS.

### GLAZING OPTIONS AVAILABLE



$\frac{3}{16}$ " (4.8) -  $\frac{7}{32}$ " (5.6) -  $\frac{1}{4}$ " (6.4)  
**SINGLE GLAZING**



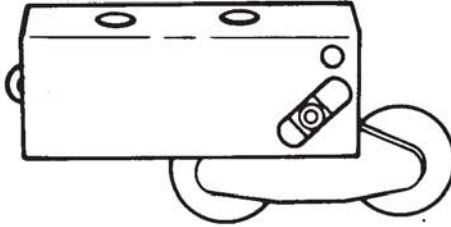
$\frac{3}{8}$ " (9.5)  
**SINGLE GLAZING  
AND  
 $\frac{5}{8}$ " (15.9) - 1" (25.4)  
DOUBLE GLAZING**

### GENERAL INFORMATION

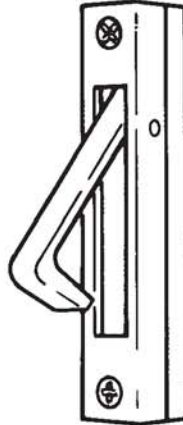
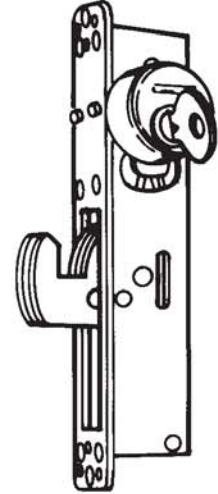
**General Description:** The "1010" sliding mall front is a multi-track unit primarily for interior applications. It is ideally suited for the following commercial applications.

- Enclosed shopping malls
- Sliding room dividers
- Institutional sliding doors
- Interior pocket doors.

# 1010 SLIDING MALL FRONT HARDWARE



TANDEM CASTER

EDGE PULL  
(OPTIONAL)FLUSH  
FACE PULLMS 1850A-505  
HOOK BOLT LOCK

EXTRUDED PULL

## 1010 SLIDING MALL FRONT

### Standard Offering

- Tandem Casters
- Adams Rite Maximum Security 1850A-505 Hookbolt Lock
- 1<sup>5</sup>/<sub>32</sub>" (29.3) cylinders – One interior, one exterior
- Flush Face Pulls

### Optional Offering

- Extruded pull in lieu of flush face pull
- Thumbturn (in lieu of interior cylinder)
- Adams Rite 1848 Hookbolt Lock w/5 pin cylinder (in lieu of A.R.M.S. 1850A-505)
- Stainless steel hookbolt and strike (not compatible with A.R.M.S. 1850A-505)
- Stainless steel rollers on tandem casters
- Bottom rail lock
- Cylinder operated flush bolts
- Manually operated flush bolt

### Limitations

- Interlock stiles require notching if the lock cylinders for the A.R.M.S. 1850A-505 lock are to bypass the stiles.
- Thumbturns will not bypass interlock stiles.