

## **Features**

- 1600 Wall System™3 is an inside / outside glazed captured curtain wall
- 1600 Wall System™3 has a 2-1/2" (63.5) sight line
- Standard 6" (152.4) or 7-1/2" (190.5) depth systems are compatible with System™1 and System™2
- Inside glazed verticals utilize the IsoStrut™ thermal barrier to provide superior structural and thermal performance
- Integral vertical exterior cover and thermal barrier reduce installed cost
- Horizontals utilize a thermal separator and pressure plate to allow for glazing or re-glazing from the exterior
- Standard infill options are 1/8" (3.2), 1/4" (6.4) and 1" (25.4)
- Thermally Broken by means of a continuous 1/4" (6.4) low conductance spacer
- Concealed fastener joinery creates smooth, monolithic appearance
- Shear block fabrication method
- Standard 90 and 135 degree inside and outside corners
- Offers integrated entrance framing systems
- Peroxide-cure high performance EPDM silicone compatible glazing materials for long-lasting seals
- Two color option
- Permanodic™ anodized finishes in seven choices
- Painted finishes in standard and custom choices

## **Optional Features**

- Steel reinforcing
- Integrates with standard Kawneer windows and GLASSvent™ windows for curtain wall
- 1600 PowerWall™ solar photovoltaic (PV) infill in lieu of glass

## **Product Applications**

- Ideal for low-rise to high-rise curtain wall applications where inside glazing and high performance is desired

For specific product applications,  
Consult your Kawneer representative.

Laws and building and safety codes governing the design and use of glazed entrance, window, and curtain wall products vary widely. Kawneer does not control the selection of product configurations, operating hardware, or glazing materials, and assumes no responsibility therefor.

Kawneer reserves the right to change configuration without prior notice when deemed necessary for product improvement.  
© Kawneer Company, Inc., 2014

**Architects** – Most extrusion and window types illustrated in this catalog are standard products for Kawneer. These concepts have been expanded and modified to afford you design freedom. Some miscellaneous details are non-standard and are intended to demonstrate how the system can be modified to expand design flexibility. Please contact your Kawneer representative for further assistance.

**PICTORIAL VIEW ..... 5**

**TYPICAL 1/4 SIZE DETAILS ..... 6-7**

**ENTRANCE ADAPTERS ..... 8**

**CORNERS..... 8**

**ANCHORING ..... 9**

**WIND LOAD CHARTS..... 10-14**

**DEADLOAD CHARTS ..... 15-17**

**THERMAL CHARTS ..... 18-22**

LAWS AND BUILDING AND SAFETY CODES GOVERNING THE DESIGN AND USE OF GLAZED ENTRANCE, WINDOW, AND CURTAIN WALL PRODUCTS VARY WIDELY. KAWNEER DOES NOT CONTROL THE SELECTION OF PRODUCT CONFIGURATIONS, OPERATING HARDWARE, OR GLAZING MATERIALS, AND ASSUMES NO RESPONSIBILITY THEREFOR.

Metric (SI) conversion figures are included throughout these details for reference. Numbers in parentheses ( ) are millimeters unless otherwise noted.

The following metric (SI ) units are found in these details:

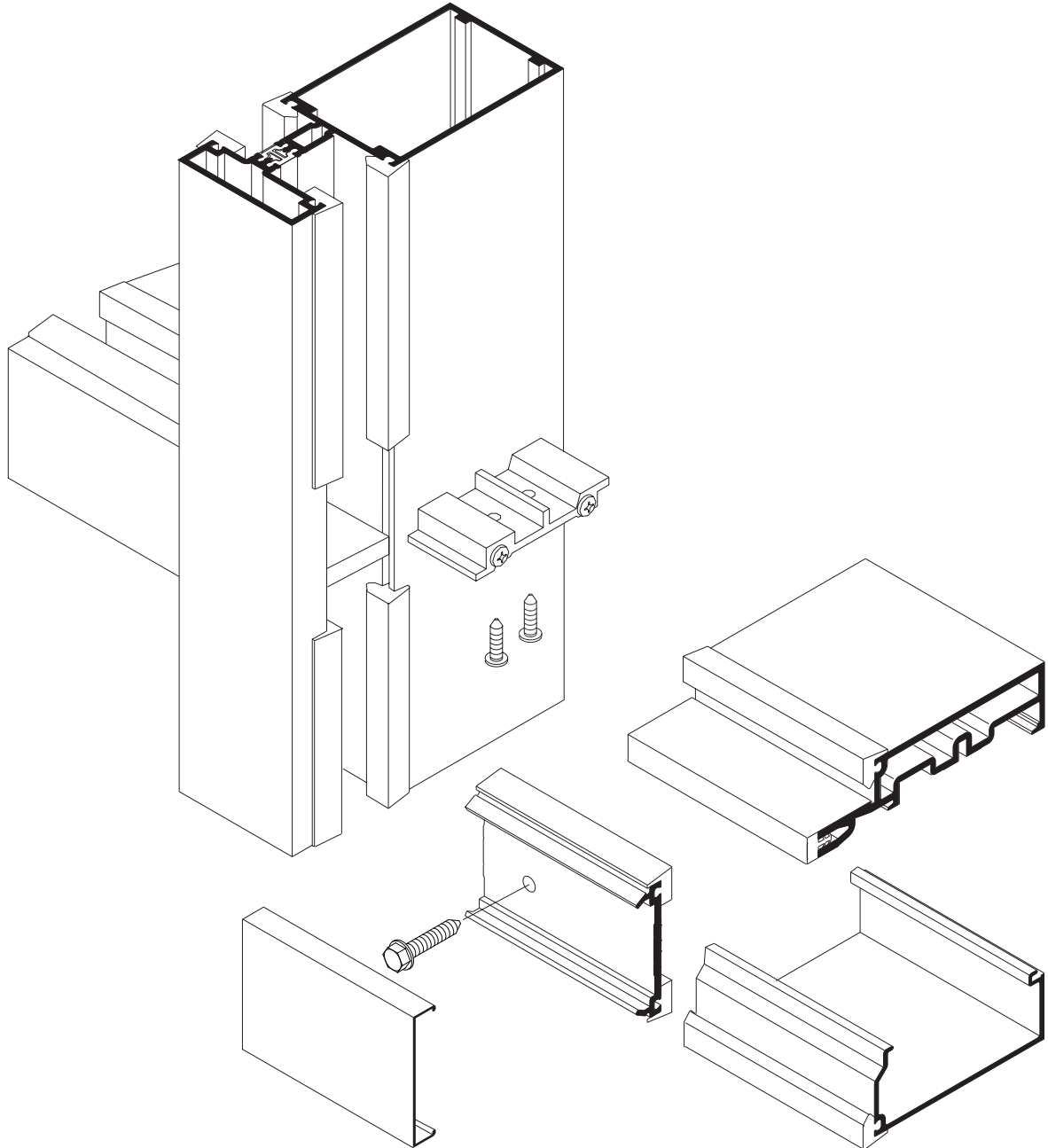
- m – meter
- cm – centimeter
- mm – millimeter
- s – second
- Pa – pascal
- MPa – megapascal

Laws and building and safety codes governing the design and use of glazed entrance, window, and curtain wall products vary widely. Kawneer does not control the selection of product configurations, operating hardware, or glazing materials, and assumes no responsibility therefor.

Kawneer reserves the right to change configuration without prior notice when deemed necessary for product improvement.  
© Kawneer Company, Inc., 2014

Laws and building and safety codes governing the design and use of glazed entrance, window, and curtain wall products vary widely. Kawneer does not control the selection of product configurations, operating hardware, or glazing materials, and assumes no responsibility therefor.

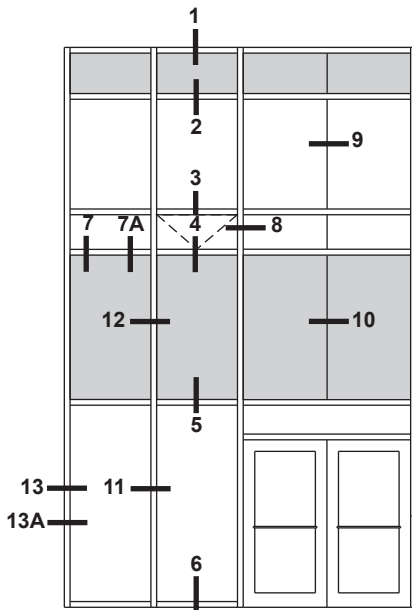
Kawneer reserves the right to change configuration without prior notice when deemed necessary for product improvement.  
© Kawneer Company, Inc., 2014



Laws and building and safety codes governing the design and use of glazed entrance, window, and curtain wall products vary widely. Kawneer does not control the selection of product configurations, operating hardware, or glazing materials, and assumes no responsibility therefor.

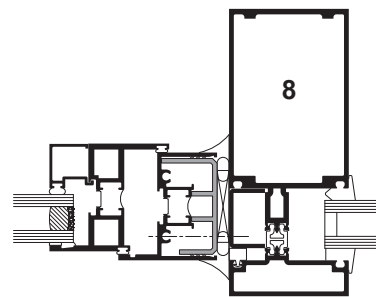
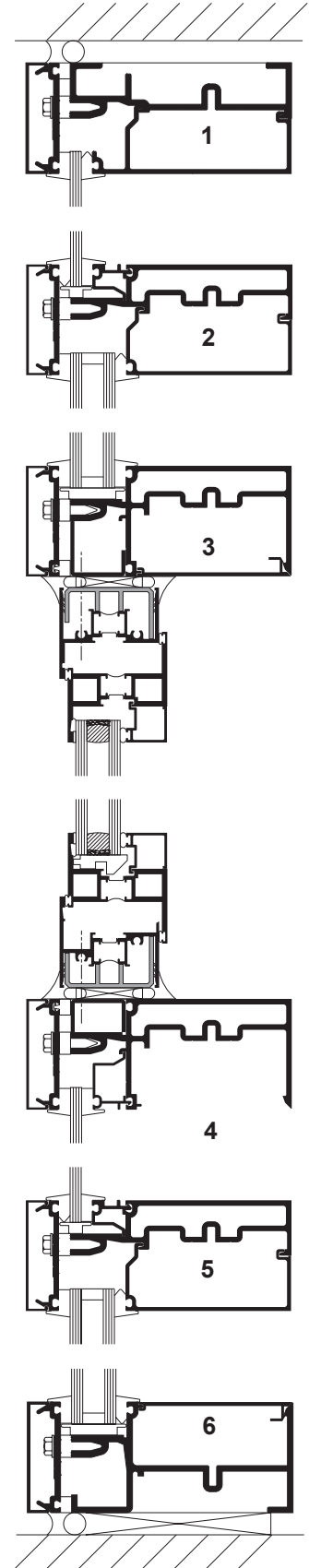
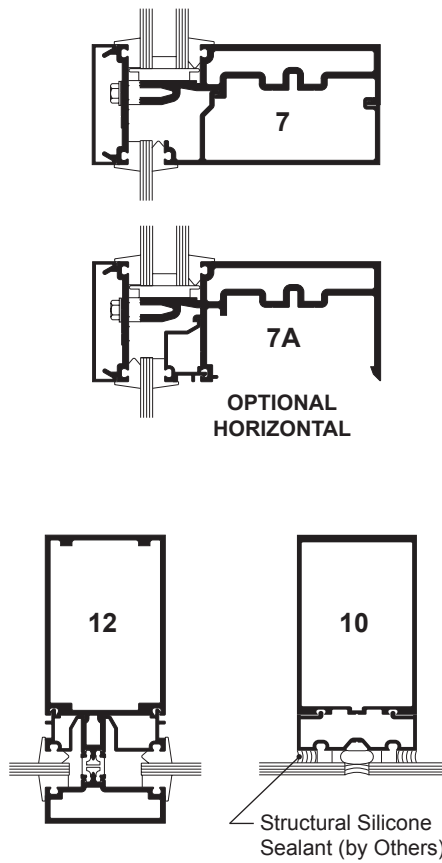
Kawneer reserves the right to change configuration without prior notice when deemed necessary for product improvement.  
© Kawneer Company, Inc., 2014

Additional information and CAD details are available at [www.kawneer.com](http://www.kawneer.com)

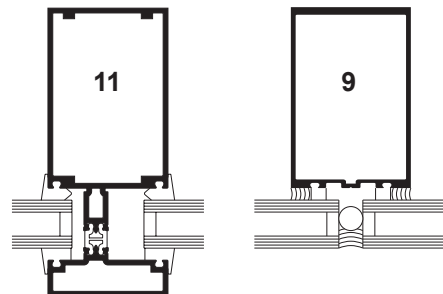
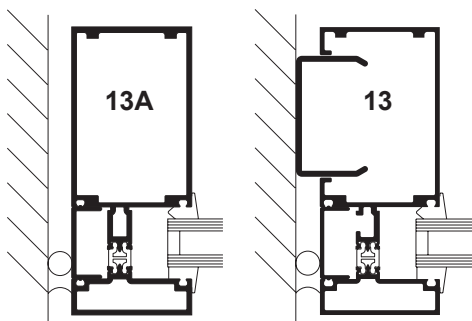


ELEVATION IS NUMBER KEYED TO DETAILS

**NOTE:**  
6" SYSTEM SHOWN, 7-1/2" SIMILAR.  
INSIDE GLAZED IsoStrut™ VERTICALS SHOWN.



**ALTERNATE JAMB**

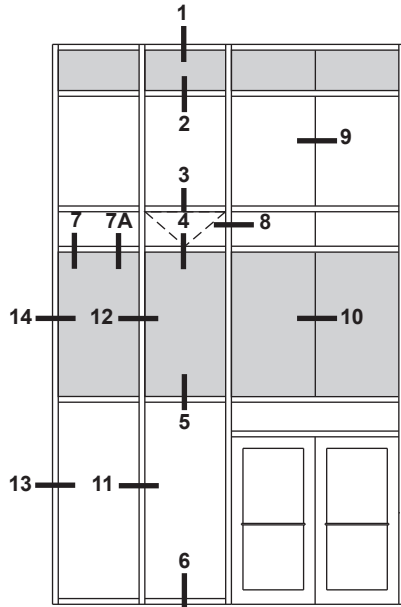


Laws and building and safety codes governing the design and use of glazed entrance, window, and curtain wall products vary widely. Kawneer does not control the selection of product configurations, operating hardware, or glazing materials, and assumes no responsibility therefor.

Kawneer reserves the right to change configuration without prior notice when deemed necessary for product improvement.  
© Kawneer Company, Inc., 2014

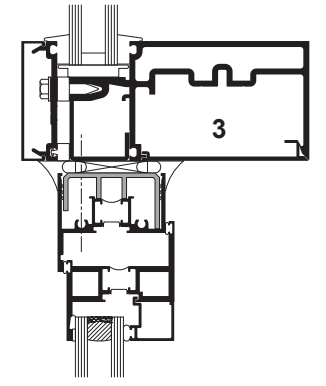
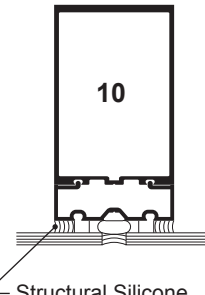
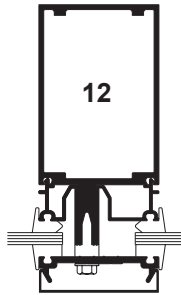
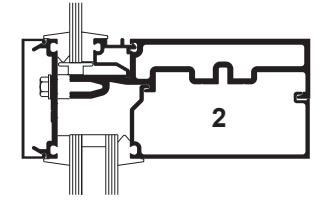
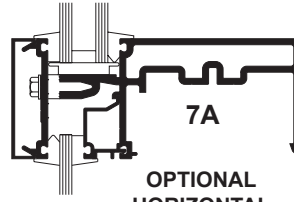
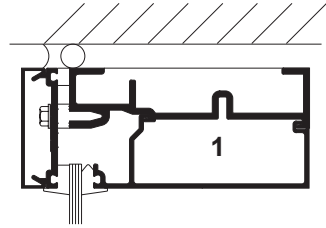
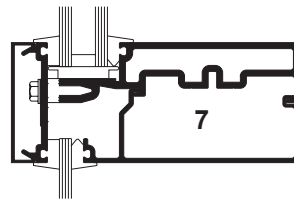
\* **INSTALLER NOTE:** Installer is responsible for all required compatibility review and approvals with the Structural Silicone Manufacturer and the Insulated Glass Unit Manufacturers.

Additional information and CAD details are available at [www.kawneer.com](http://www.kawneer.com)

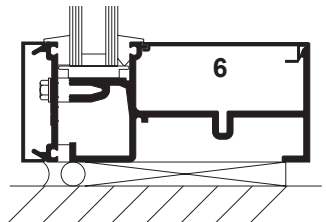
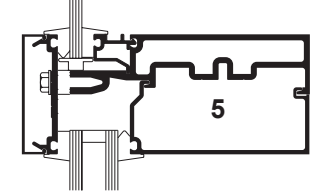
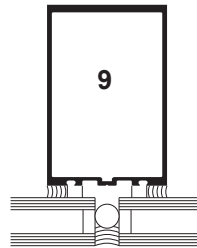
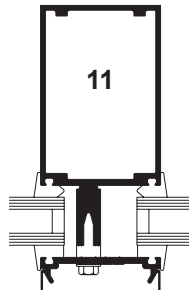
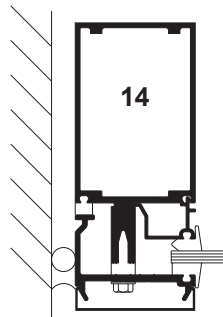
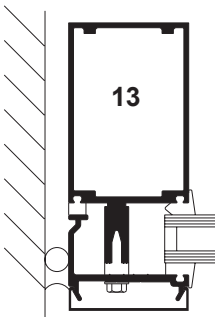
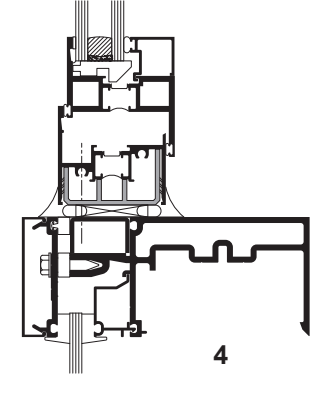
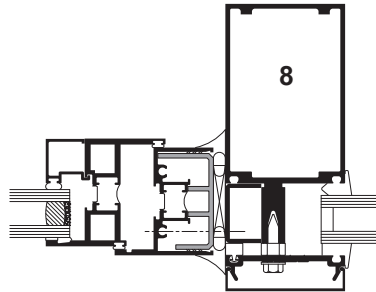


ELEVATION IS NUMBER KEYED TO DETAILS

**NOTES:**  
 6" SYSTEM SHOWN, 7-1/2" SIMILAR.  
 APPLIED PRESSURE PLATE OPTION SHOWN.



Structural Silicone Sealant (by Others)\*



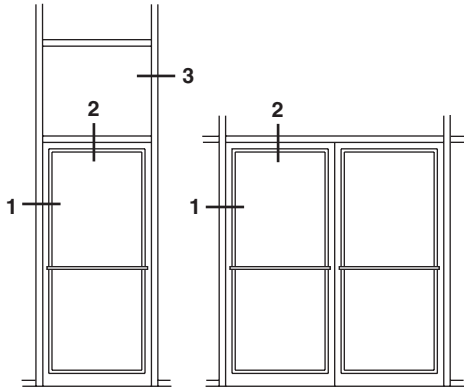
\* **INSTALLER NOTE:** Installer is responsible for all required compatibility review and approvals with the Structural Silicone Manufacturer and the Insulated Glass Unit Manufacturers.

Laws and building and safety codes governing the design and use of glazed entrance, window, and curtain wall products vary widely. Kawneer does not control the selection of product configurations, operating hardware, or glazing materials, and assumes no responsibility therefor.

Kawneer reserves the right to change configuration without prior notice when deemed necessary for product improvement.  
 © Kawneer Company, Inc., 2014

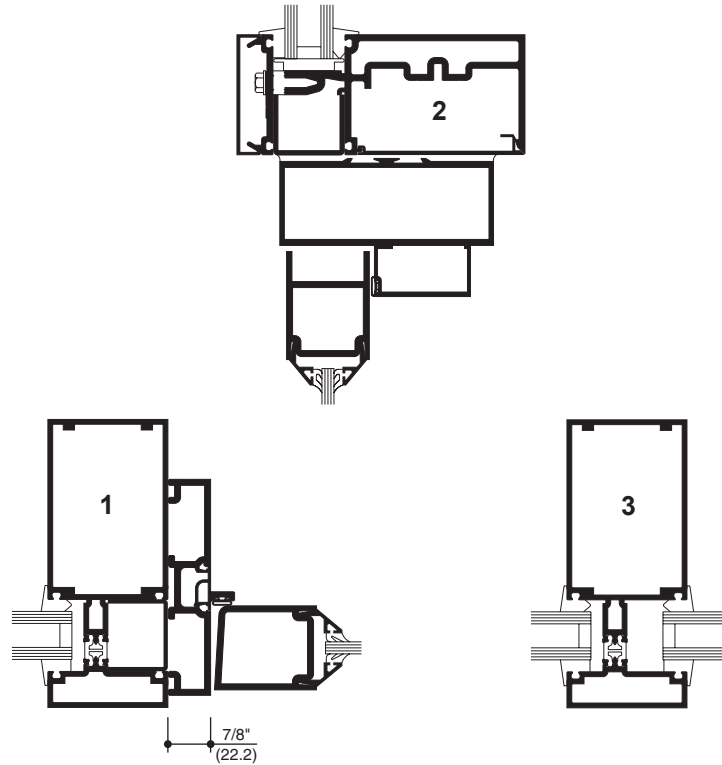
Additional information and CAD details are available at [www.kawneer.com](http://www.kawneer.com)

## ENTRANCE ADAPTERS

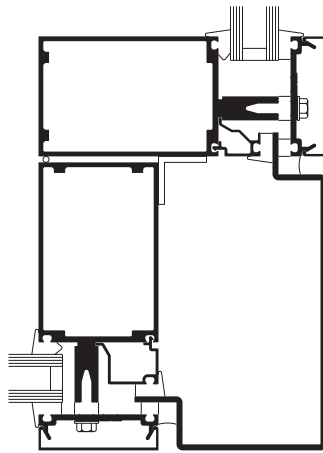


ELEVATION IS NUMBER KEYED TO DETAILS

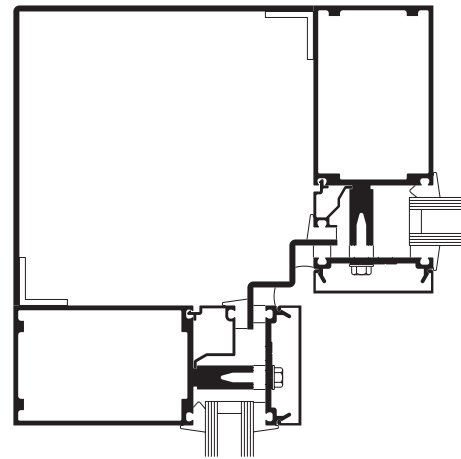
**NOTE:**  
 OFFSET PIVOT/BUTT HUNG ENTRANCE SHOWN.  
 ALSO AVAILABLE FOR CENTER HUNG



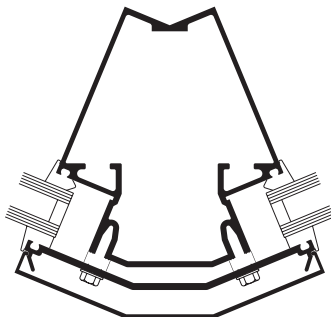
## CORNERS



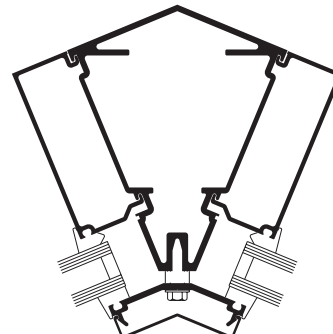
OUTSIDE 90° CORNER



INSIDE 90° CORNER



OUTSIDE 135° CORNER



INSIDE 135° CORNER

Laws and building and safety codes governing the design and use of glazed entrance, window, and curtain wall products vary widely. Kawneer does not control the selection of product configurations, operating hardware, or glazing materials, and assumes no responsibility therefor.

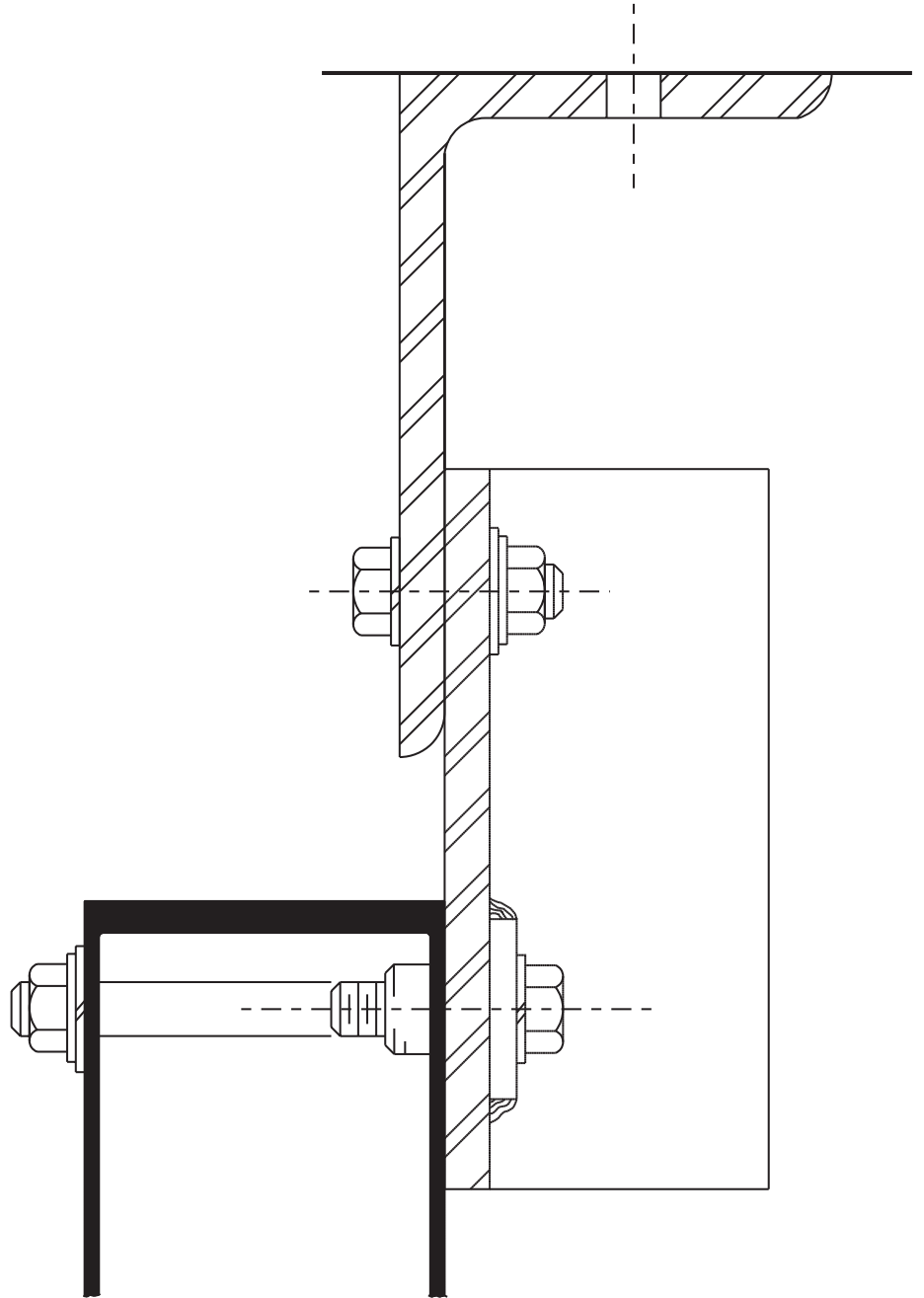
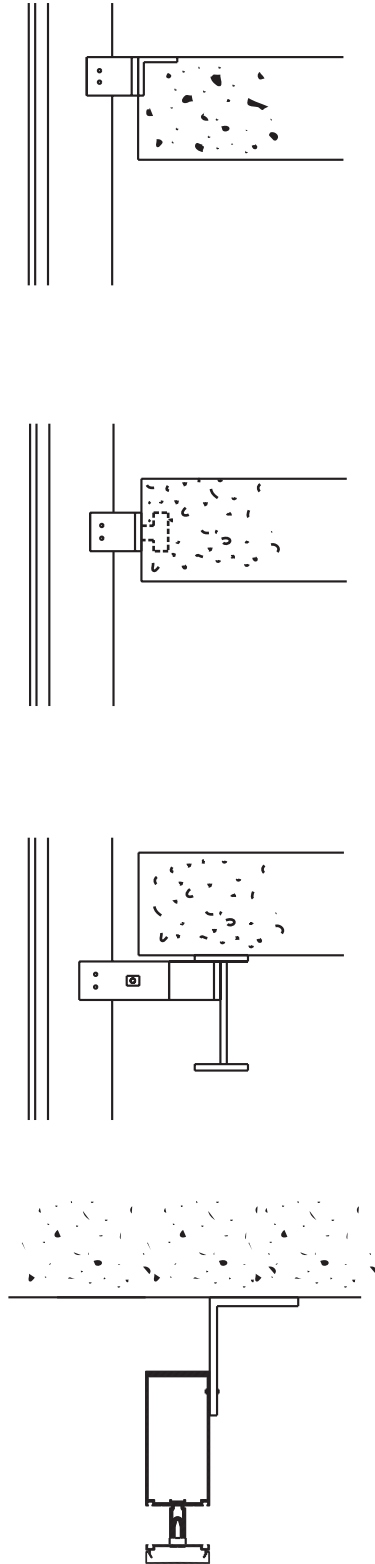
Kawneer reserves the right to change configuration without prior notice when deemed necessary for product improvement.  
 © Kawneer Company, Inc., 2014



Laws and building and safety codes governing the design and use of glazed entrance, window, and curtain wall products vary widely. Kawneer does not control the selection of product configurations, operating hardware, or glazing materials, and assumes no responsibility therefor.

Kawneer reserves the right to change configuration without prior notice when deemed necessary for product improvement.

© Kawneer Company, Inc., 2014



## WIND LOAD CHARTS

Mullions are designed for deflection limitations in accordance with AAMA TIR-A11 of L/175 up to 13'-6" and L/240 +1/4" above 13'-6". These curves are for mullions WITH HORIZONTALS and are based on engineering calculations for stress and deflection. Allowable wind load stress for ALUMINUM 15,152 psi (104 MPa), STEEL 30,000 psi (207 MPa). Charted curves, in all cases are for the limiting value. Wind load charts contained herein are based upon nominal wind load utilized in allowable stress design. A conversion from Load Resistance Factor Design (LRFD) is provided. To convert ultimate wind loads to nominal loads, multiply ultimate wind loads by a factor of 0.6 per ASCE/SEI 7. A 4/3 increase in allowable stress has not been used to develop these curves. For special situations not covered by these curves, contact your Kawneer representative for additional information.

## DEADLOAD CHARTS

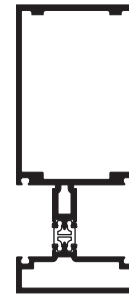
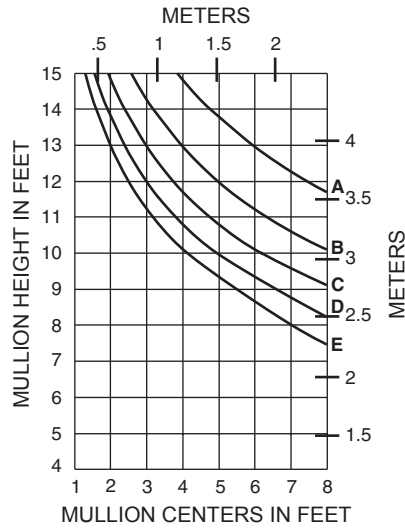
Horizontal or deadload limitations are based upon 1/8" (3.2) maximum allowable deflection at the center of an intermediate horizontal member. The accompanying charts are calculated for 1/4" (6.4) and 1" (25.4) thick glass supported on two setting blocks placed at the loading points shown.

Laws and building and safety codes governing the design and use of glazed entrance, window, and curtain wall products vary widely. Kawneer does not control the selection of product configurations, operating hardware, or glazing materials, and assumes no responsibility therefor.

Kawneer reserves the right to change configuration without prior notice when deemed necessary for product improvement.  
© Kawneer Company, Inc., 2014

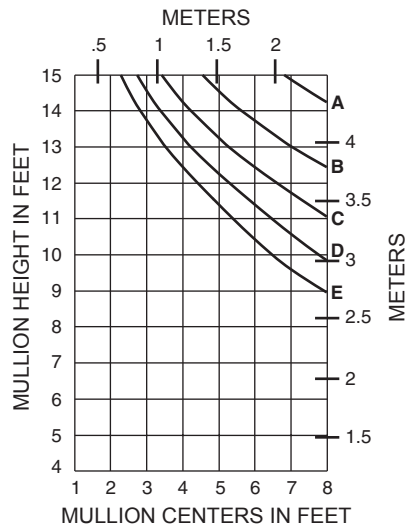
	Allowable Stress Design Load	LRFD Ultimate Design Load
A =	20 PSF (960)	33 PSF (1580)
B =	30 PSF (1440)	50 PSF (2400)
C =	40 PSF (1920)	67 PSF (3200)
D =	50 PSF (2400)	83 PSF (4000)
E =	60 PSF (2880)	100 PSF (4790)

**SINGLE SPAN**



163200

**SINGLE SPAN**

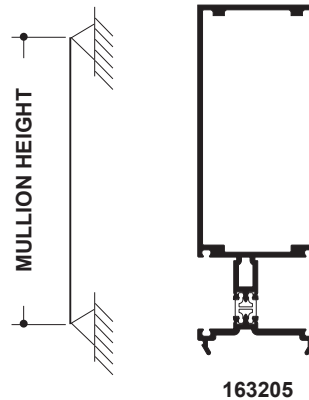
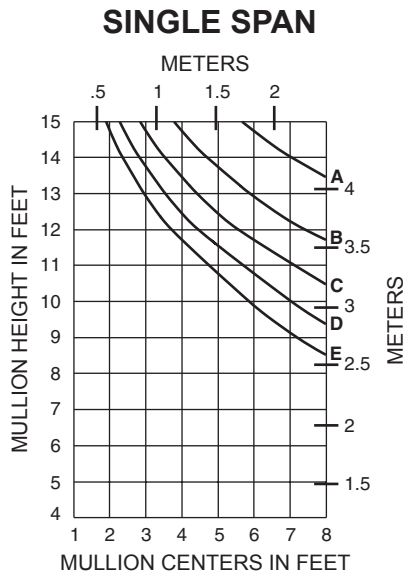
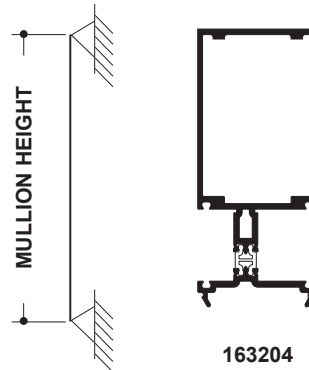
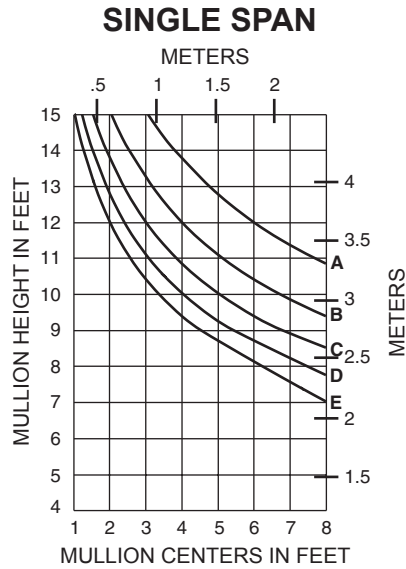


163201

Laws and building and safety codes governing the design and use of glazed entrance, window, and curtain wall products vary widely. Kawneer does not control the selection of product configurations, operating hardware, or glazing materials, and assumes no responsibility therefor.

Kawneer reserves the right to change configuration without prior notice when deemed necessary for product improvement.  
© Kawneer Company, Inc., 2014

	Allowable Stress Design Load	LRFD Ultimate Design Load
A =	20 PSF (960)	33 PSF (1580)
B =	30 PSF (1440)	50 PSF (2400)
C =	40 PSF (1920)	67 PSF (3200)
D =	50 PSF (2400)	83 PSF (4000)
E =	60 PSF (2880)	100 PSF (4790)

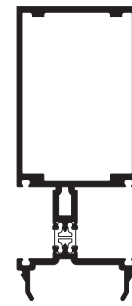
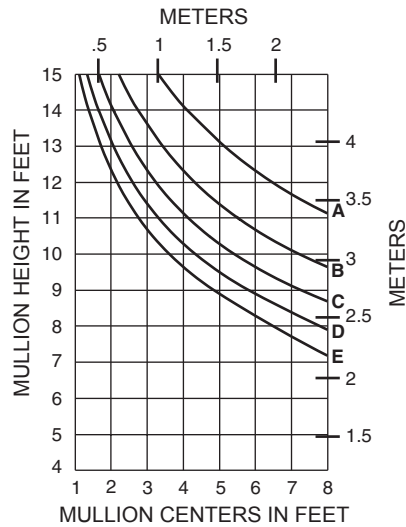


Laws and building and safety codes governing the design and use of glazed entrance, window, and curtain wall products vary widely. Kawneer does not control the selection of product configurations, operating hardware, or glazing materials, and assumes no responsibility therefor.

Kawneer reserves the right to change configuration without prior notice when deemed necessary for product improvement.  
© Kawneer Company, Inc., 2014

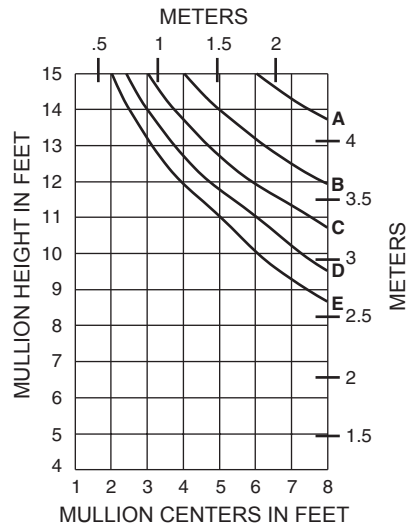
	Allowable Stress Design Load	LRFD Ultimate Design Load
A =	20 PSF (960)	33 PSF (1580)
B =	30 PSF (1440)	50 PSF (2400)
C =	40 PSF (1920)	67 PSF (3200)
D =	50 PSF (2400)	83 PSF (4000)
E =	60 PSF (2880)	100 PSF (4790)

**SINGLE SPAN**



163208

**SINGLE SPAN**

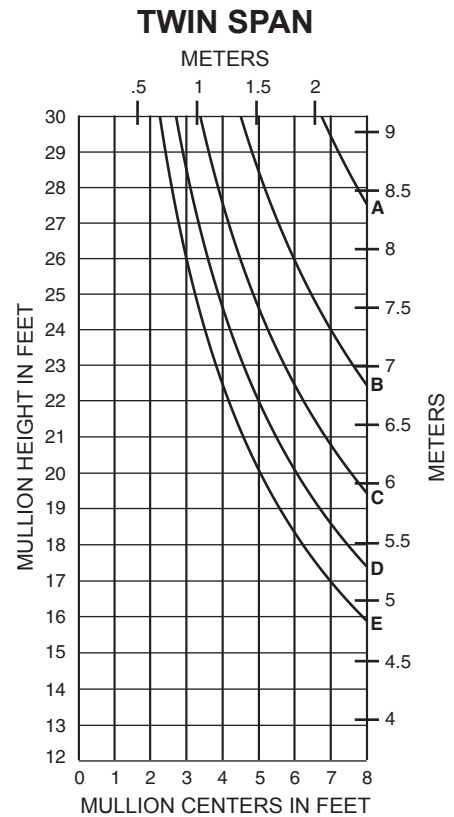
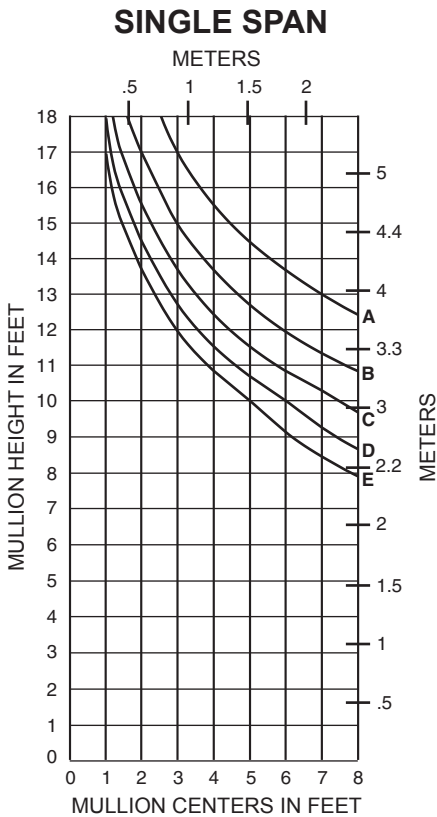
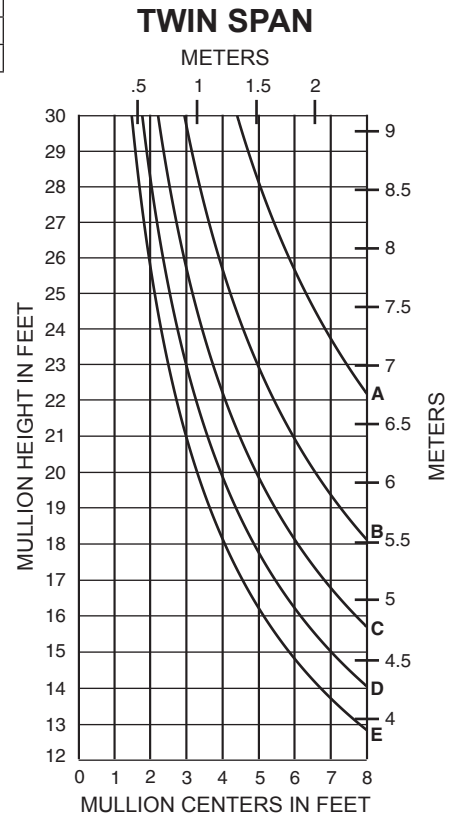
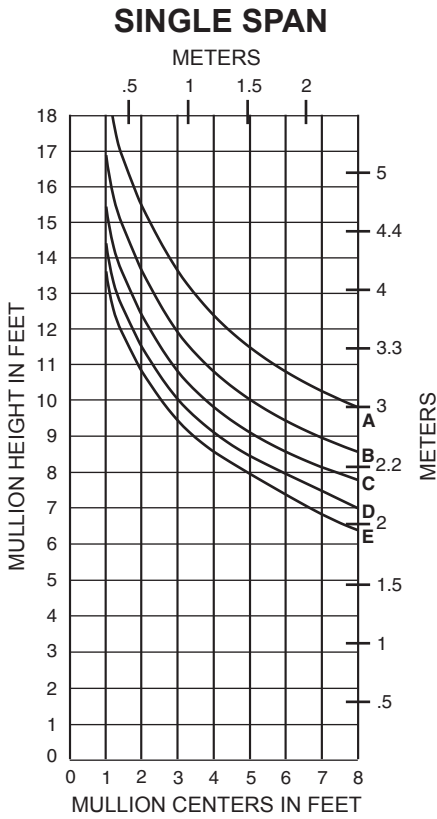


163209

Laws and building and safety codes governing the design and use of glazed entrance, window, and curtain wall products vary widely. Kawneer does not control the selection of product configurations, operating hardware, or glazing materials, and assumes no responsibility therefor.

Kawneer reserves the right to change configuration without prior notice when deemed necessary for product improvement.  
© Kawneer Company, Inc., 2014

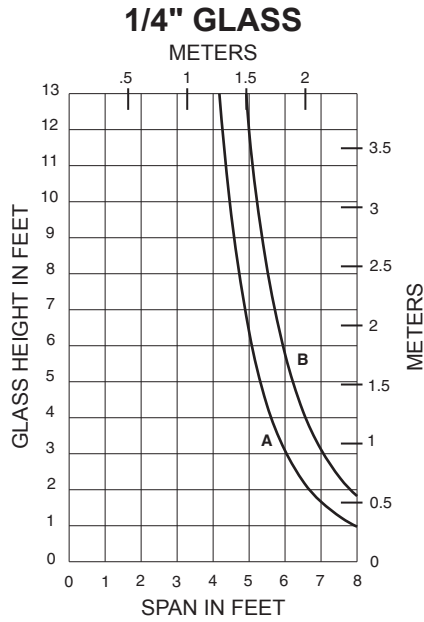
	Allowable Stress Design Load	LRFD Ultimate Design Load
A =	20 PSF (960)	33 PSF (1580)
B =	30 PSF (1440)	50 PSF (2400)
C =	40 PSF (1920)	67 PSF (3200)
D =	50 PSF (2400)	83 PSF (4000)
E =	60 PSF (2880)	100 PSF (4790)



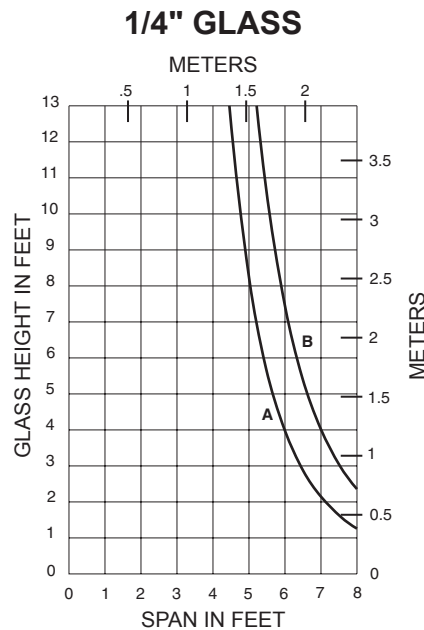
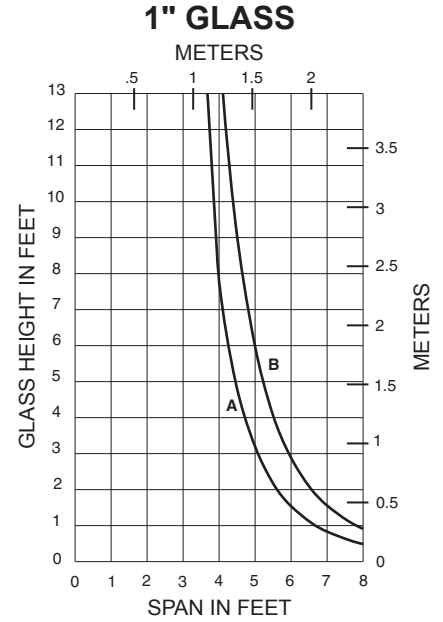
Laws and building and safety codes governing the design and use of glazed entrance, window, and curtain wall products vary widely. Kawneer does not control the selection of product configurations, operating hardware, or glazing materials, and assumes no responsibility therefor.

Kawneer reserves the right to change configuration without prior notice when deemed necessary for product improvement.  
© Kawneer Company, Inc., 2014

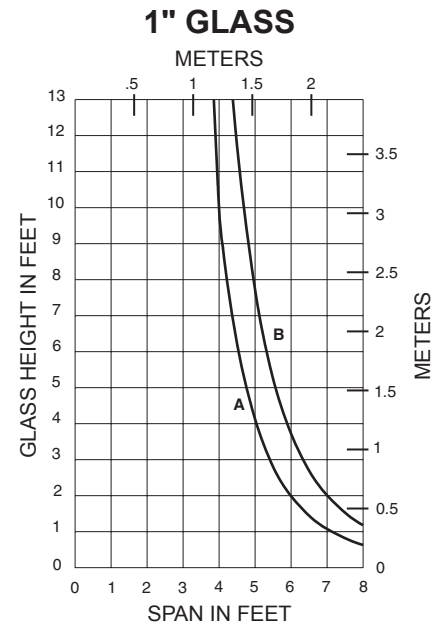
A = 1/4 POINT LOADING  
 B = 1/8 POINT LOADING



163004



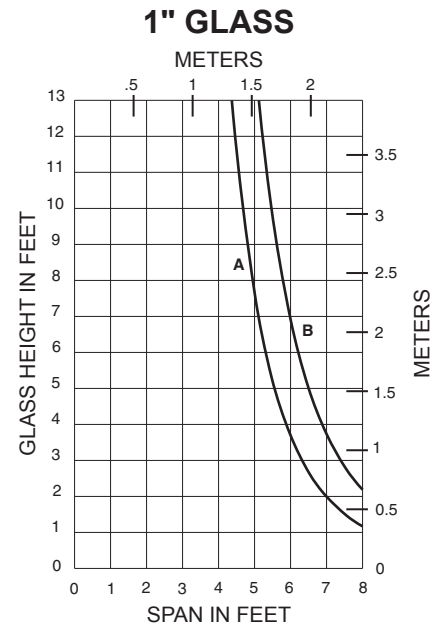
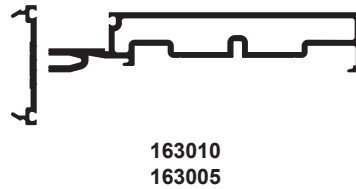
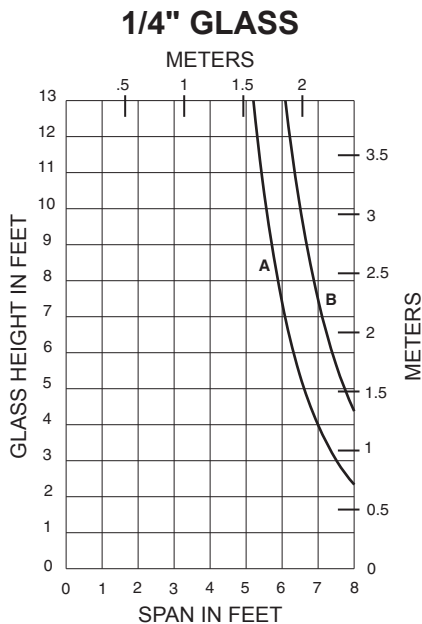
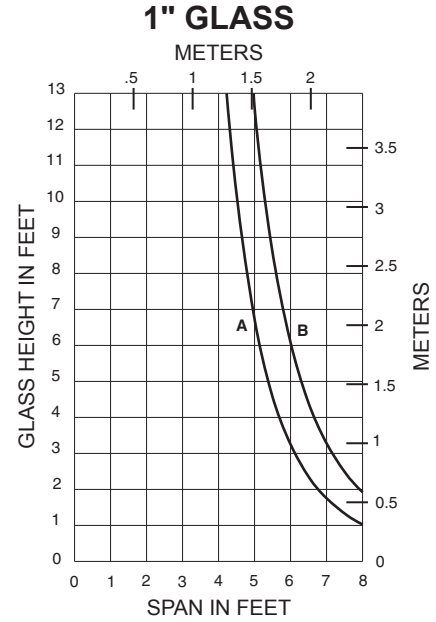
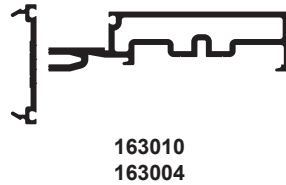
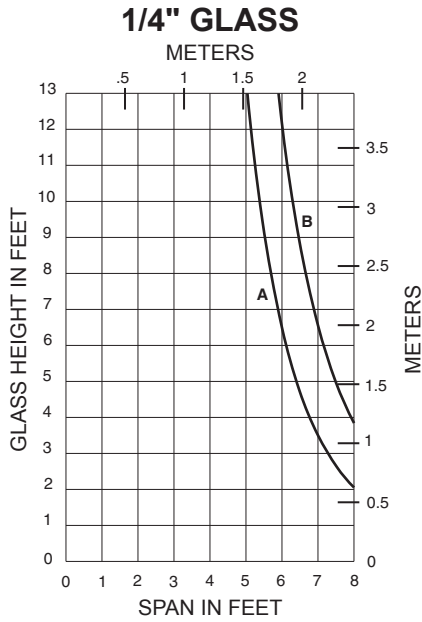
163005



Laws and building and safety codes governing the design and use of glazed entrance, window, and curtain wall products vary widely. Kawneer does not control the selection of product configurations, operating hardware, or glazing materials, and assumes no responsibility therefor.

Kawneer reserves the right to change configuration without prior notice when deemed necessary for product improvement.  
 © Kawneer Company, Inc., 2014

A = 1/4 POINT LOADING  
 B = 1/8 POINT LOADING

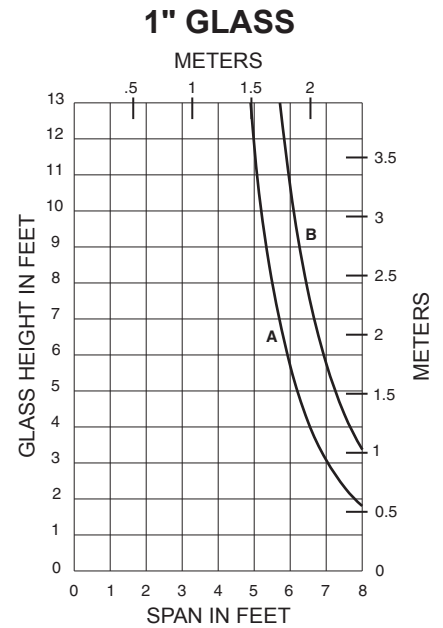
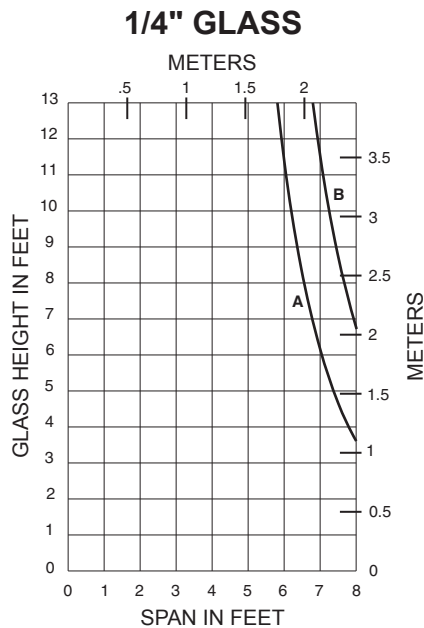
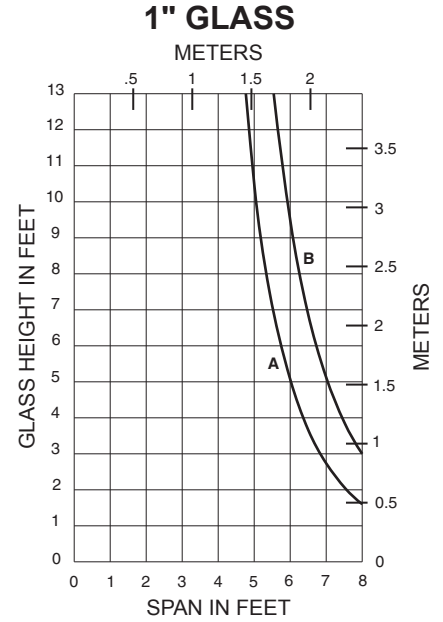
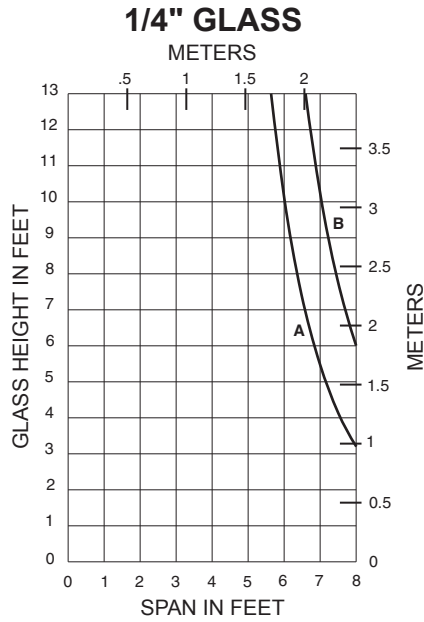


Laws and building and safety codes governing the design and use of glazed entrance, window, and curtain wall products vary widely. Kawneer does not control the selection of product configurations, operating hardware, or glazing materials, and assumes no responsibility therefor.

Kawneer reserves the right to change configuration without prior notice when deemed necessary for product improvement.  
 © Kawneer Company, Inc., 2014



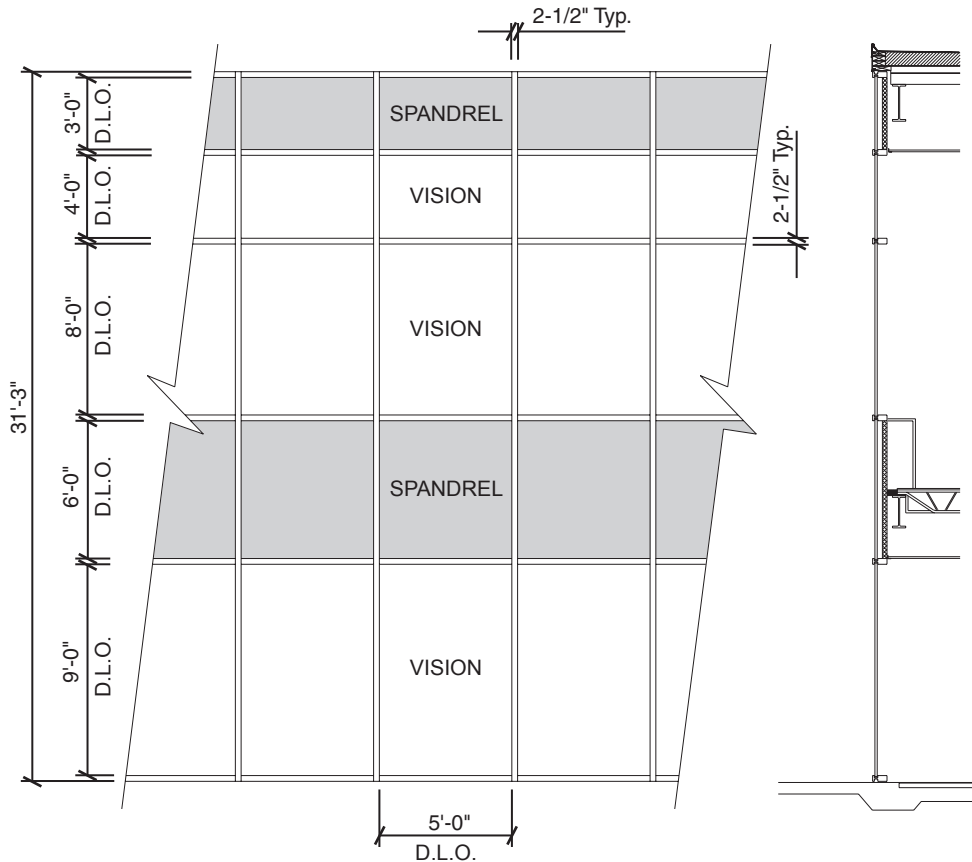
A = 1/4 POINT LOADING  
B = 1/8 POINT LOADING



Laws and building and safety codes governing the design and use of glazed entrance, window, and curtain wall products vary widely. Kawneer does not control the selection of product configurations, operating hardware, or glazing materials, and assumes no responsibility therefor.

Kawneer reserves the right to change configuration without prior notice when deemed necessary for product improvement.  
© Kawneer Company, Inc., 2014

**Generic Project Specific U-factor Example Calculation**  
**(Percent of Glass will vary on specific products depending on sitelines)**  
 (Based on single bay of Curtain Wall/Window Wall)



### Vision Area

Example Glass U-factor	= 0.48 Btu/(ft <sup>2</sup> · h · °F)
Vision Area	= 5(9 + 8 + 4) = 105.0 ft <sup>2</sup>
Total Area (Vision)	= 5' 2-1/2" (9' 3-3/4" + 8' 2-1/2" + 4' 2-1/2") = 113.2 ft <sup>2</sup>
Percentage of Vision Glass	= (Vision Area ÷ Total Area)100 = (105.0 ÷ 113.2)100 = 93%

### Spandrel Area

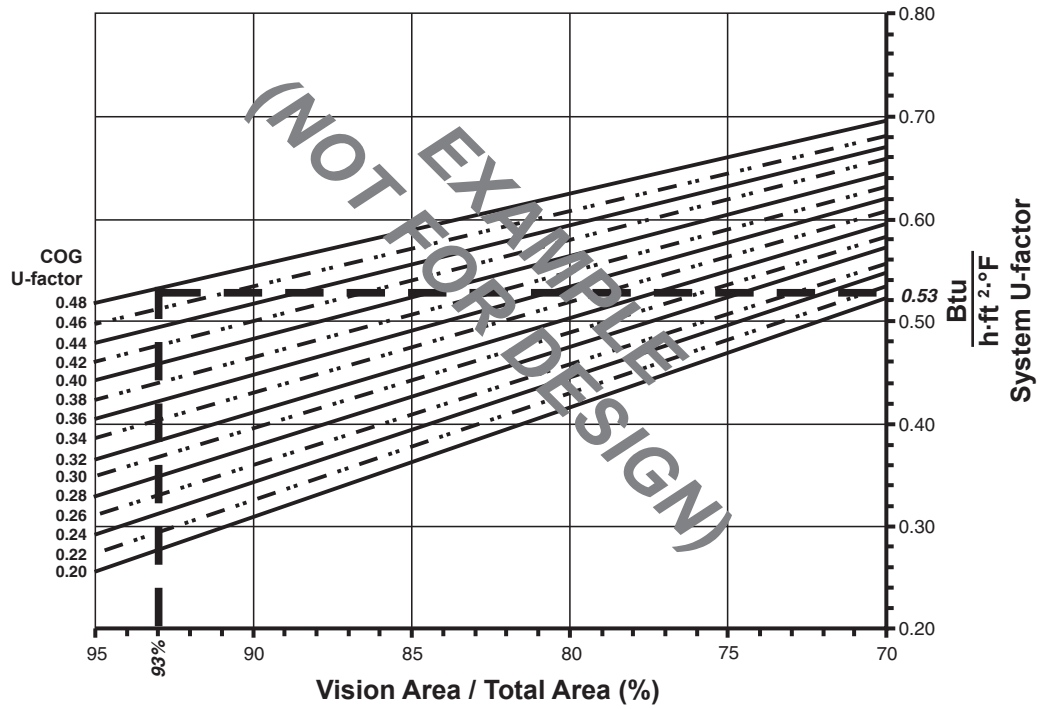
Example Spandrel R-value	= 15 (ft <sup>2</sup> · h · °F)/Btu
Spandrel Area	= 5(6 + 3) = 45.0 ft <sup>2</sup>
Total Area (Spandrel)	= 5' 2-1/2" (6' 2-1/2" + 3' 3-3/4") = 49.6 ft <sup>2</sup>
Percent of Spandrel	= (Spandrel Area ÷ Total Area)100 = (45.0 ÷ 49.6)100 = 91%

Laws and building and safety codes governing the design and use of glazed entrance, window, and curtain wall products vary widely. Kawneer does not control the selection of product configurations, operating hardware, or glazing materials, and assumes no responsibility therefor.

Kawneer reserves the right to change configuration without prior notice when deemed necessary for product improvement.  
© Kawneer Company, Inc., 2014

Vision Area Chart

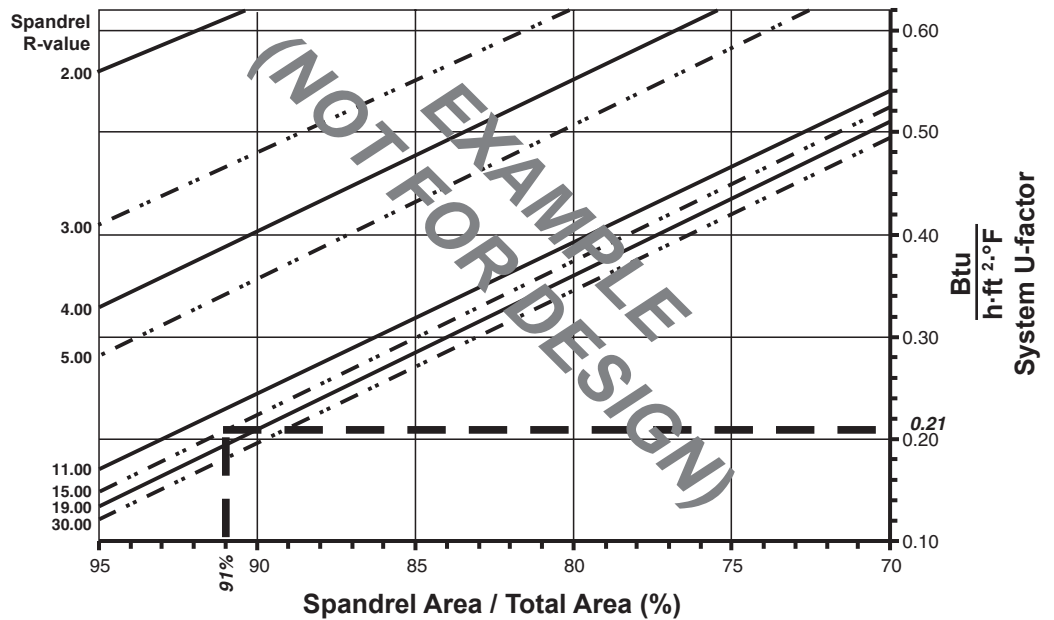
System U-factor vs Percent of Vision Area



Based on a single curtain wall bay of 93% vision glass and center of glass U-factor of 0.48, System U-factor is equal to 0.53 Btu/(h·ft<sup>2</sup>·°F)

Spandrel Area Chart

System U-factor vs Percent of Spandrel Area



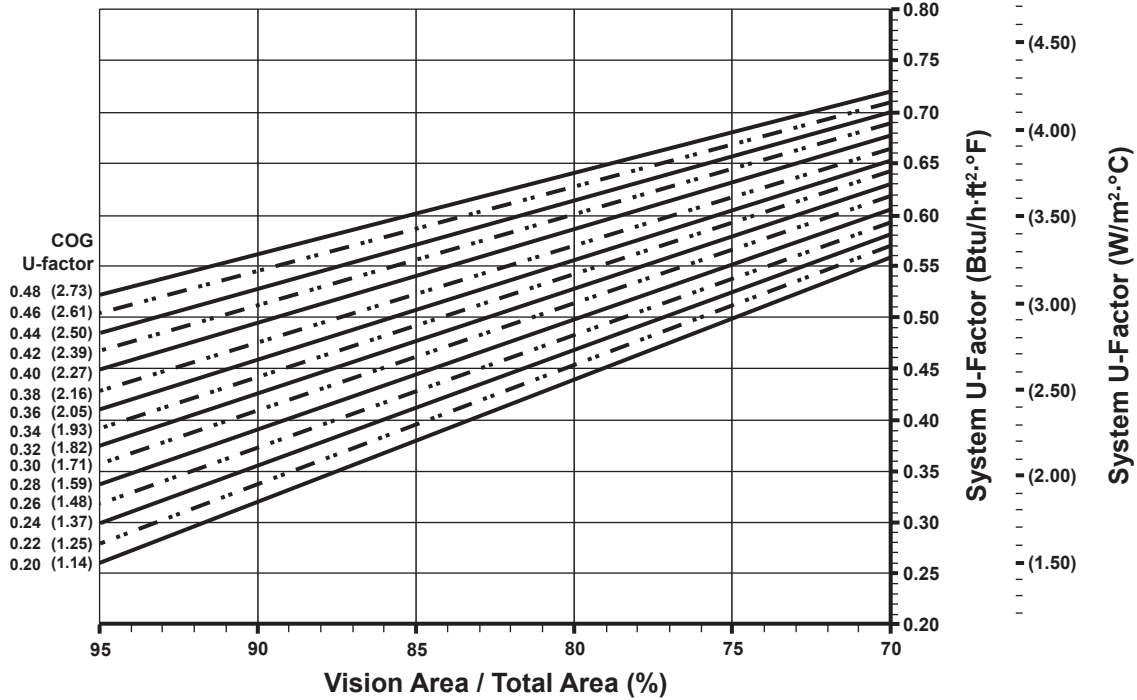
Based on a single curtain wall bay of 91% spandrel and center of spandrel R-value of 15, system U-factor is equal to 0.21 Btu/(h·ft<sup>2</sup>·°F)

Laws and building and safety codes governing the design and use of glazed entrance, window, and curtain wall products vary widely. Kawneer does not control the selection of product configurations, operating hardware, or glazing materials, and assumes no responsibility therefor.

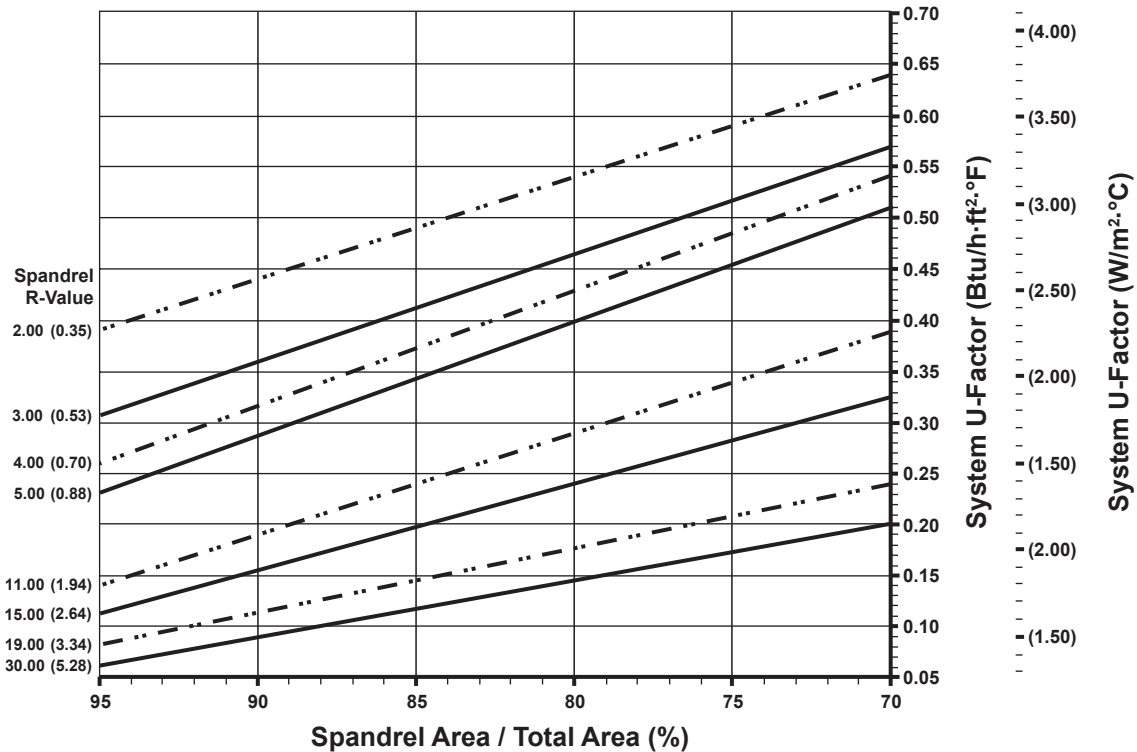
Kawneer reserves the right to change configuration without prior notice when deemed necessary for product improvement.  
© Kawneer Company, Inc., 2014

Note:  
 Values in parentheses are metric.  
 COG=Center of Glass.  
 Charts are generated per AAMA 507.

### System U-Factor for Vision Glass



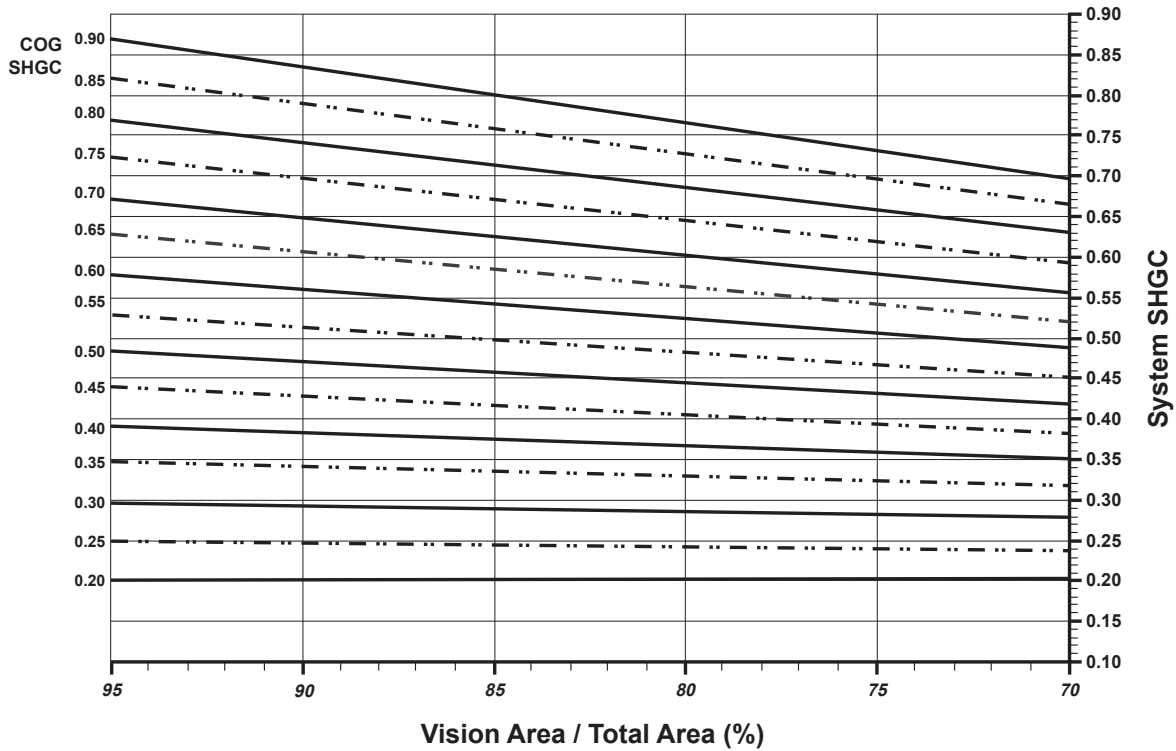
### System U-Factors for Spandrel Glass



Laws and building and safety codes governing the design and use of glazed entrance, window, and curtain wall products vary widely. Kawneer does not control the selection of product configurations, operating hardware, or glazing materials, and assumes no responsibility therefor.

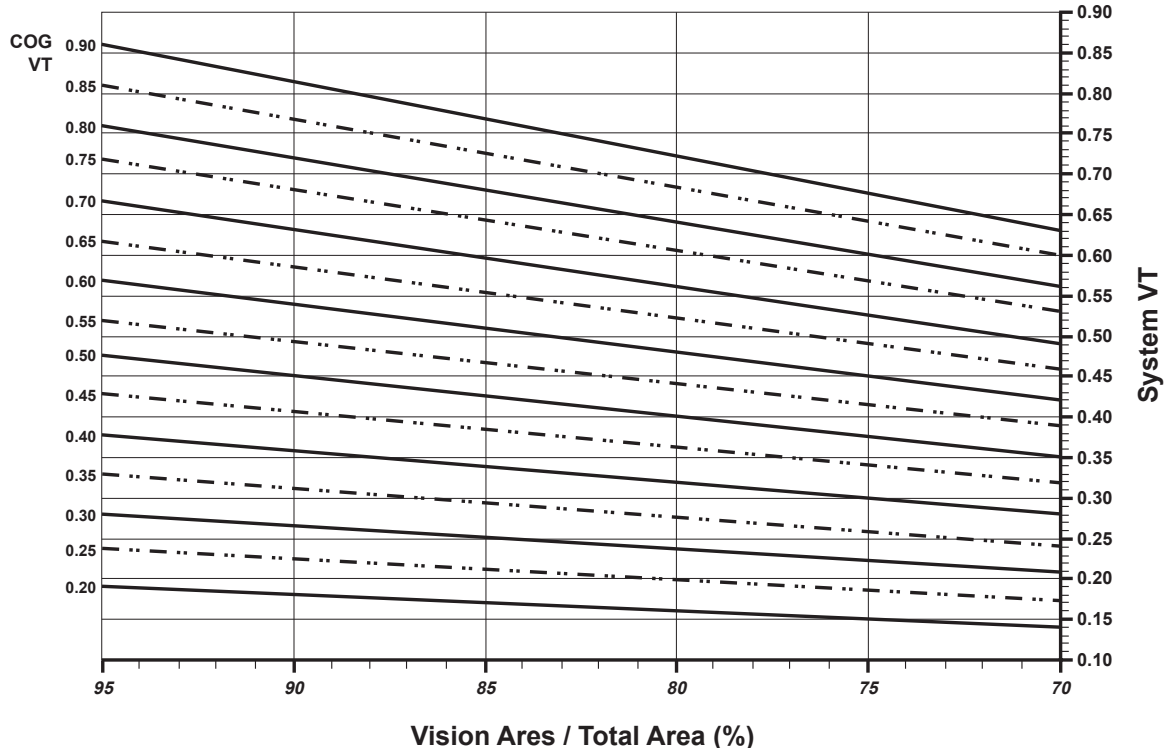
Kawneer reserves the right to change configuration without prior notice when deemed necessary for product improvement.  
 © Kawneer Company, Inc., 2014

System Solar Heat Gain Coefficient (SHGC) vs Percent of Vision Area



Charts are generated per AAMA 507.

System Visible Transmittance (VT) vs Percent of Vision Area



Charts are generated per AAMA 507.

Laws and building and safety codes governing the design and use of glazed entrance, window, and curtain wall products vary widely. Kawneer does not control the selection of product configurations, operating hardware, or glazing materials, and assumes no responsibility therefor.

Kawneer reserves the right to change configuration without prior notice when deemed necessary for product improvement.  
© Kawneer Company, Inc., 2014

**Thermal Transmittance**<sup>1</sup> (BTU/hr • ft<sup>2</sup> • °F)

Glass U-Factor <sup>3</sup>	Overall U-Factor <sup>4</sup>
0.48	0.56
0.46	0.55
0.44	0.53
0.42	0.51
0.40	0.49
0.38	0.48
0.36	0.46
0.34	0.44
0.32	0.43
0.30	0.41
0.28	0.39
0.26	0.37
0.24	0.36
0.22	0.34
0.20	0.32

**NOTE:** For glass values that are not listed, linear interpolation is permitted.

1. U-Factors are determined in accordance with NFRC 100.
2. SHGC and VT values are determined in accordance with NFRC 200.
3. Glass properties are based on center of glass values and are obtained from your glass supplier.
4. Overall U-Factor, SHGC, and VT Matricies are based on the standard NFRC specimen size of 2,000 mm wide by 2,000 mm high (78-3/4" by 78-3/4").

**SHGC Matrix**<sup>2</sup>

Glass SHGC <sup>3</sup>	Overall SHGC <sup>4</sup>
0.75	0.69
0.70	0.65
0.65	0.60
0.60	0.56
0.55	0.51
0.50	0.47
0.45	0.43
0.40	0.38
0.35	0.34
0.30	0.29
0.25	0.25
0.20	0.20
0.15	0.16
0.10	0.11
0.05	0.07

**Visible Transmittance**<sup>2</sup>

Glass VT <sup>3</sup>	Overall VT <sup>4</sup>
0.90	0.81
0.85	0.76
0.80	0.72
0.75	0.67
0.70	0.63
0.65	0.58
0.60	0.54
0.55	0.49
0.50	0.45
0.45	0.40
0.40	0.36
0.35	0.31
0.30	0.27
0.25	0.22
0.20	0.18

Laws and building and safety codes governing the design and use of glazed entrance, window, and curtain wall products vary widely. Kawneer does not control the selection of product configurations, operating hardware, or glazing materials, and assumes no responsibility therefor.

Kawneer reserves the right to change configuration without prior notice when deemed necessary for product improvement.  
© Kawneer Company, Inc., 2014