

## GENERAL NOTES

THESE INSTALLATION INSTRUCTIONS ARE A SUPPLEMENT TO THE APPROVED SHOP DRAWINGS. USE IN CONJUNCTION WITH THOSE DRAWINGS.

### 1 - HANDLING, STORING AND PROTECTING ALUMINUM MATERIAL

THE FOLLOWING PRECAUTIONS ARE RECOMMENDED TO ASSURE EARLY ACCEPTANCE OF YOUR PRODUCTS AND WORKMANSHIP.

A - HANDLE CAREFULLY - DO NOT DROP FROM THE TRUCK. STACK WITH ADEQUATE SEPARATION SO MATERIAL WILL NOT RUB TOGETHER. STORE OFF THE GROUND. PROTECT AGAINST ELEMENTS AND OTHER CONSTRUCTION TRADES.

B - KEEP MATERIAL AWAY FROM WATER, MUD AND SPRAY - PREVENT CEMENT, PLASTER AND OTHER MATERIALS FROM DAMAGING THE FINISH.

C - PROTECT THE MATERIALS AFTER ERECTION, BY WRAPPING WITH KRAFT PAPER - OR BY ERECTING VISQUEEN/CANVAS SPLATTER SCREENS. CEMENT, PLASTER, TERRAZZO AND OTHER ALKALINE MATERIALS ARE VERY HARMFUL TO THE FINISH AND SHOULD BE REMOVED WITH WATER AND MILD SOAP BEFORE SETTING OCCURS. UNDER NO CIRCUMSTANCES ALLOW THESE MATERIALS TO DRY OR PERMANENT STAINING WILL OCCUR.

### 2 - GENERAL RULES

THE FOLLOWING PRACTICES ARE RECOMMENDED FOR ALL WALL INSTALLATIONS.

A - READ COMPLETE INSTRUCTIONS BEFORE ORDERING GLASS OR FABRICATING MATERIAL.

B - CHECK SHOP DRAWINGS TO BECOME THOROUGHLY FAMILIAR WITH THE JOB.

C - ALL MATERIALS ARE TO BE INSTALLED PLUMB, LEVEL AND TRUE.

D - ALL WORK SHOULD START FROM ESTABLISHED BENCH MARKS AND COLUMN CENTER LINES ESTABLISHED BY THE ARCHITECTURAL DRAWINGS AND THE GENERAL CONTRACTOR.

E - THE SEQUENCE OF ERECTION SHOULD BE COORDINATED WITH THE JOB SUPERINTENDENT SO DELAYS ARE PREVENTED AND RISK OF MATERIAL DAMAGE IS MINIMIZED. IF PRESETTING OF ANCHORAGE IS REQUIRED, COORDINATE WITH GENERAL CONTRACTOR AND SUPERVISE LOCATION.

F - MAKE CERTAIN CONSTRUCTION WHICH WILL RECEIVE YOUR MATERIALS IS ACCORDING TO THE CONTRACT DOCUMENTS. IF NOT, NOTIFY THE GENERAL CONTRACTOR IN WRITING AND RESOLVE DIFFERENCES BEFORE PROCEEDING WITH YOUR WORK.

G - INSULATE ALL ALUMINUM TO BE PLACED DIRECTLY IN CONTACT WITH THE MASONRY OR INCOMPATIBLE MATERIALS WITH A HEAVY COAT OF ZINC CHROMATE OR BITUMINOUS PAINT.

H - FOLLOW KAWNEER INSTALLATION AND GLAZING INSTRUCTIONS.

J - CHECK ALL MATERIAL ON ARRIVAL FOR QUANTITY.

K - BE SURE TO HAVE ALL THE MATERIALS AND TOOLS NEEDED TO BEGIN THE INSTALLATION.

- 1 - APPROVED SHOP DRAWINGS
- 2 - LEVEL AND PLUMB (TRANSIT)
- 3 - FASTENERS AND REQUIRED DRIVERS.
- 4 - PERIMETERS AND ACCESSORIES SUCH AS ANCHORS, FASTENERS, SLEEVES AND/OR SPLICE CAPS.
- 5 - SEALING MATERIALS.
- 6 - GLAZING MATERIALS.

L - FOLLOW SEALANT MANUFACTURER'S RECOMMENDATIONS FOR PROPER SEALANT AND APPLICATION. ALL SEALANTS AND MASTICS MUST BE COMPATIBLE WITH ALL SURFACES INCLUDING OTHER SEALANT SURFACES. WHERE REQUIRED ALL SEALANTS MUST ADHERE TO ALL SURFACES INCLUDING OTHER SEALANT SURFACES.

### 1600UT SYSTEM 1 NOTES

1600UT SYSTEM 1 IS AVAILABLE WITH 1" FRAMING MEMBERS WHICH ACCEPT BOTH 1" AND 1/4" INFILLS AND 1-3/4" FRAMING MEMBERS WHICH ACCEPT BOTH 1-3/4" AND 1" INFILLS. DETAILS IN THIS INSTALLATION MANUAL SHOWING 1" FRAMING WILL BE SIMILAR FOR 1-3/4" FRAMING UNLESS NOTED OTHERWISE.

GLASS BITE IS 1/2" AT VERTICALS AND HORIZONTALS. GLASS SIZES MUST BE CALCULATED FROM APPROVED SHOP DRAWINGS.

UNLESS OTHERWISE SPECIFIED, IT IS RECOMMENDED THAT SILICONE SEALANT BE USED FOR ALL INTERNAL SEALS.

SEALANT MUST BE APPLIED PER THE SEALANT MANUFACTURER'S RECOMMENDATIONS AND PASS ALL ADHESION AND COMPATIBILITY TESTING.

AT ALL JOINT SEALS, SEALANT MUST ADHERE TO METAL, GASKETS, THERMAL SEPARATOR AND JOINT PLUG MATERIALS.

CLEAN ALL SURFACES PRIOR TO APPLICATION OF SEALANT AND PRIME WHERE NECESSARY TO ACHIEVE PROPER ADHESION.

SHIM ALL SILL HORIZONTALS AT SETTING BLOCK LOCATIONS.

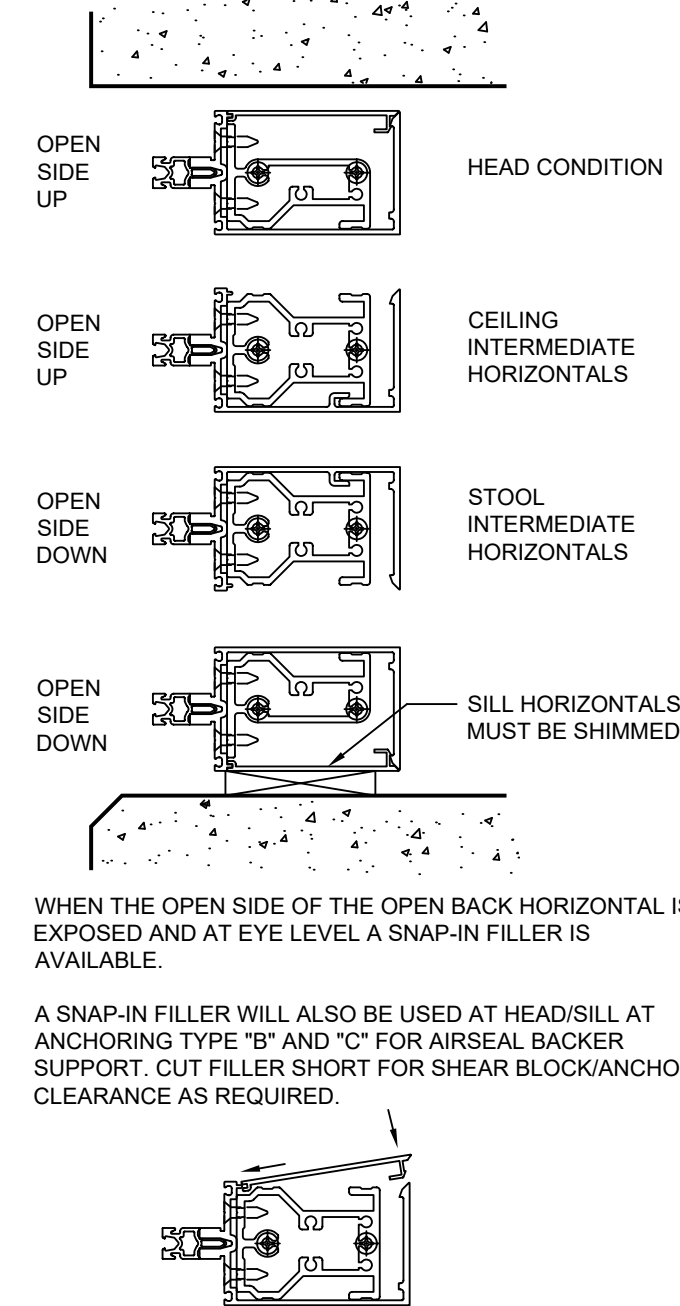
DO NOT REDUCE THE .625" EMBEDMENT DEPTH OF THE 1600UT PRESSURE PLATE FASTENER IN THE SCREW RACE. OTHER ACCOMMODATIONS / COMPONENTS MUST BE MADE FOR OTHER OPTIONAL INFILL SIZES / APPLICATIONS TO ENSURE THREAD ENGAGEMENT REMAINS AS INITIALLY DESIGNED. TORQUE APPLIED TO THE 1600UT PRESSURE PLATE FASTENERS REMAIN AT 95-100 IN-LBS PER STANDARD INSTALLATION INSTRUCTIONS FOR ALL INFILL DEPTHS.

## OPEN BACK HORIZONTAL NOTES

THE OPEN BACK HORIZONTAL IS TO BE TYPICALLY USED FOR ALL HEAD/SILL AND LAST BAY INTERMEDIATE HORIZONTALS.

THE OPEN BACK HORIZONTAL CAN BE USED AT OTHER CONDITIONS IF IT IS AN ADVANTAGE TO THE JOB DESIGN.

THE SHEAR BLOCK AT ALL OPEN BACK INTERMEDIATE HORIZONTALS HAS THE OPTION TO BE PRE-INSTALLED INTO THE HORIZONTAL BEFORE HORIZONTALS ARE INSTALLED



AT INTERMEDIATE HORIZONTALS, WHEN THE SNAP-IN FILLER IS NOT USED, AND DUE TO STANDARD COMMERCIAL EXTRUDING TOLERANCES, IT MAY BE REQUIRED TO USE A 4" PIECE OF THE FILLER AT EACH END OF A HORIZONTAL.

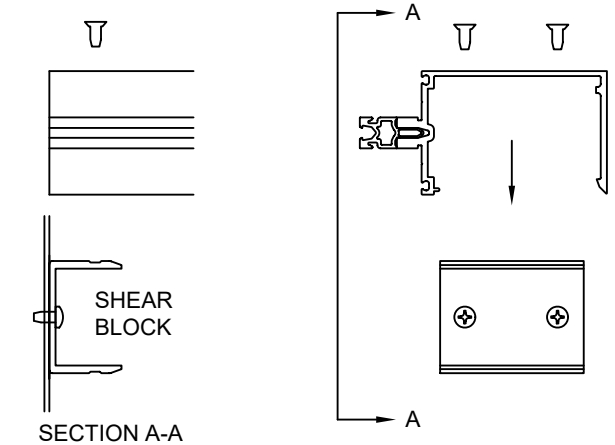
USE PART 162316 FOR THE 6" & 6-3/4" DEEP SYSTEM  
USE PART 162317 FOR THE 7-1/2" & 8-1/4" DEEP SYSTEM

Laws and building and safety codes governing the design and use of Kawneer products, such as glazed entrance, window, and curtain wall products, vary widely. Kawneer does not control the selection of product configurations, operating hardware, or glazing materials, and assumes no responsibility therefor. It is the responsibility of the owner, the specifier, the architect, the general contractor, and the installer and the fabricator/transformer, consistent with their roles, to determine the appropriate materials for a project in strict conformity to all applicable national, regional and local building codes and regulations. Kawneer reserves the right to change configuration without prior notice when deemed necessary for product improvement. © 2011, Kawneer Company, Inc.

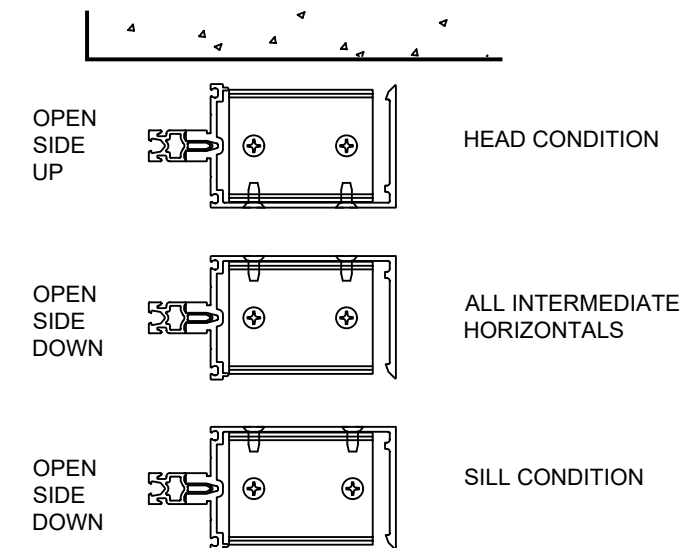
## OPEN BACK HORIZONTALS AT 90° AND 135° CORNERS

WHENEVER POSSIBLE AVOID USING OPEN BACK HORIZONTALS AT 90° AND 135° CORNERS. IF USING THE OPEN BACK HORIZONTAL BECOMES ABSOLUTELY NECESSARY THE SHEAR BLOCK CONNECTION WILL BE AS SHOWN BELOW.

ALSO REFER TO CORNER INSTRUCTIONS 171908



THE OPEN SIDE OF THE OPEN BACK HORIZONTAL IS TO BE POSITIONED AS SHOWN BELOW. THE INTERMEDIATE HORIZONTAL IS POSITIONED OPEN SIDE DOWN FOR DEAD LOAD SUPPORT.



**KAWNEER**

1600UT SYSTEM 1  
INSTALLATION  
INSTRUCTIONS

Product Engineering & Development

97904-228  
03/10/22

171910 SHEET 01 OF 09

**STEP - 1 CHECK OPENINGS**

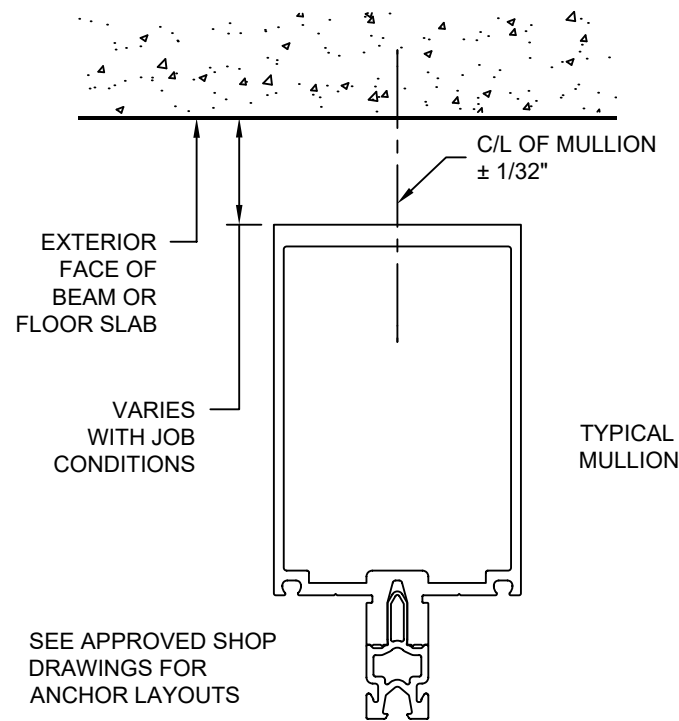
ELEVATIONS AND SLABS MUST BE WITHIN ADJUSTMENT OF ANCHORING SYSTEM. SEE APPROVED SHOP DRAWINGS FOR ALLOWABLE ADJUSTMENT.

ANCHORING SURFACES OF PERIMETER CONSTRUCTION MUST BE LEVEL AND PLUMB WITHIN THE ADJUSTMENT LIMITS OF THE HEAD, SILL AND JAMB. SEE APPROVED SHOP DRAWINGS FOR ALLOWABLE ADJUSTMENT.

**STEP - 2 LAY OUT ANCHOR AND MULLION CENTERLINES**

USE WALL LINES ESTABLISHED BY THE GENERAL CONTRACTOR. ON EACH FLOOR LAY OUT A REFERENCE LINE TO ESTABLISH IN AND OUT WALL LOCATIONS.

USE COLUMN CENTER LINES ESTABLISHED BY THE GENERAL CONTRACTOR. ON EACH FLOOR LAY OUT MULLION CENTER LINES AND ANCHOR CENTER LINES.



**STEP - 3 INSTALL PRESET ANCHORS IF APPLICABLE**

USING LOCATION LINES PREVIOUSLY ESTABLISHED INSTALL PRESET ANCHORS IN PLACE PER APPROVED SHOP DRAWINGS.

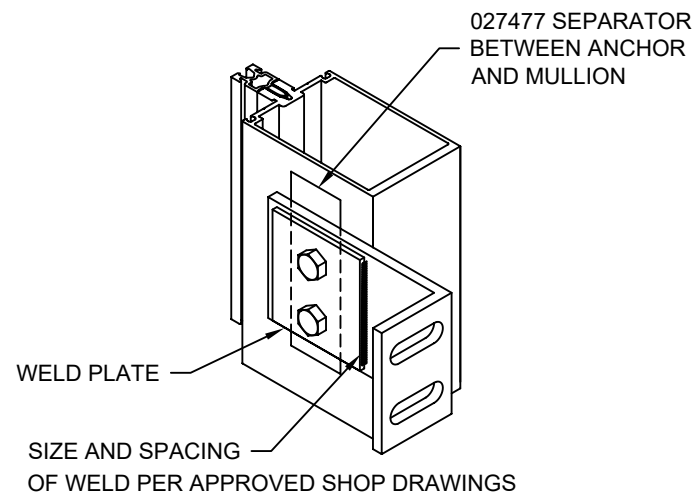
**STEP - 4 FRAME ASSEMBLY**

ATTACH ANCHORS TO MULLIONS WHERE APPLICABLE.

ANCHOR PREP MAY BE FABRICATED IN THE FIELD OR FACTORY. CONSULT APPROVED SHOP DRAWINGS FOR CORRECT METHOD.

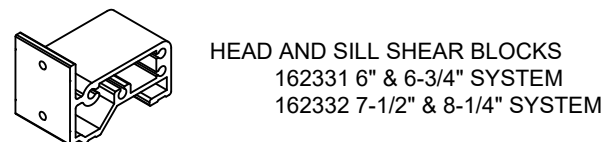
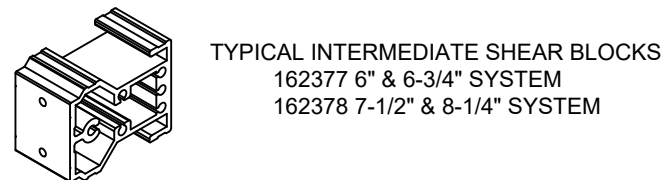
STANDARD ANCHOR PREP IS THRU-BOLTED AT INTERMEDIATE VERTICALS AND TAPPING PLATES ARE USED AT JAMB VERTICALS. REFER TO APPROVED SHOP DRAWINGS FOR CORRECT METHOD.

WHEN WELDING ANCHORS, PROTECT INSTALLED GLASS AND METAL FROM WELD SPLATTER.



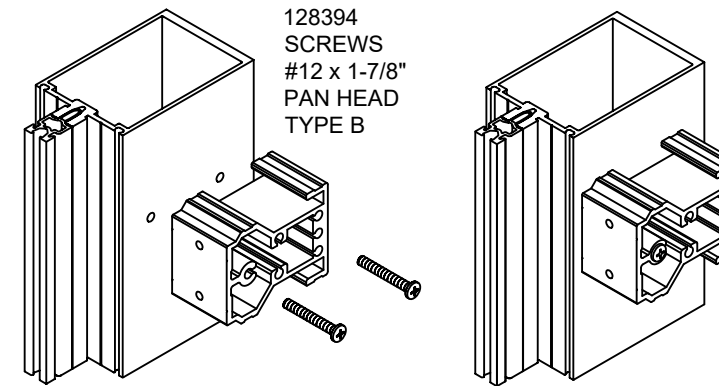
DO NOT OVER TIGHTEN ANCHOR CONNECTIONS. TIGHTEN TO A "SNUG TIGHT" POSITION WITH PARTS BROUGHT INTO GOOD CONTACT. BE SURE ANY SPRING TYPE LOCK WASHERS ARE COMPRESSED. THEN TIGHTEN APPROXIMATELY 1/2 MORE TURN.

ATTACH SHEAR BLOCKS.



**STEP - 4 FRAME ASSEMBLY**

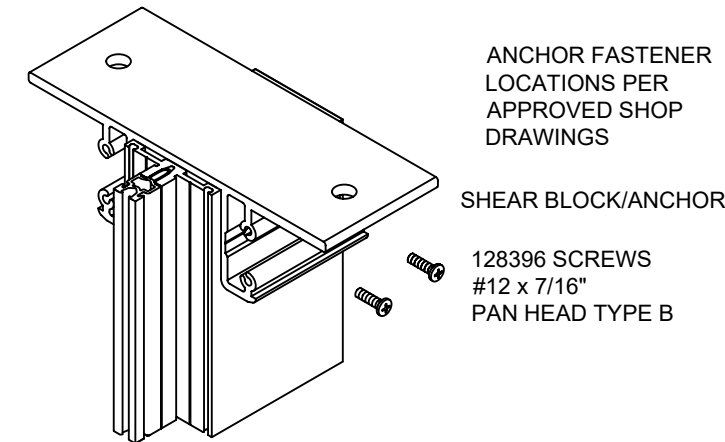
ATTACH SHEAR BLOCKS



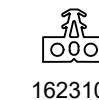
HEAD/SILL SHEAR BLOCK/ANCHOR WHERE APPLICABLE AND SHOWN BELOW.

- 162314 6" & 6-3/4" SYSTEM AT JAMBS
- 162315 7-1/2" & 8-1/4" SYSTEM AT JAMBS
- 162342 6" & 6-3/4" SYSTEM AT MULLIONS
- 162343 7-1/2" & 8-1/4" SYSTEM AT MULLIONS

STRUCTURAL INTEGRITY OF ANCHOR AND FASTENERS MUST BE CHECKED BY FACTORY ENGINEERING.

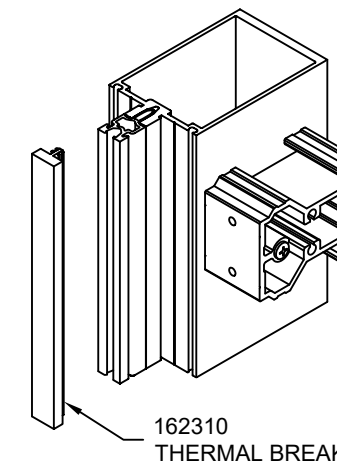


**STEP - 5 INSTALL 162310 THERMAL BREAK**

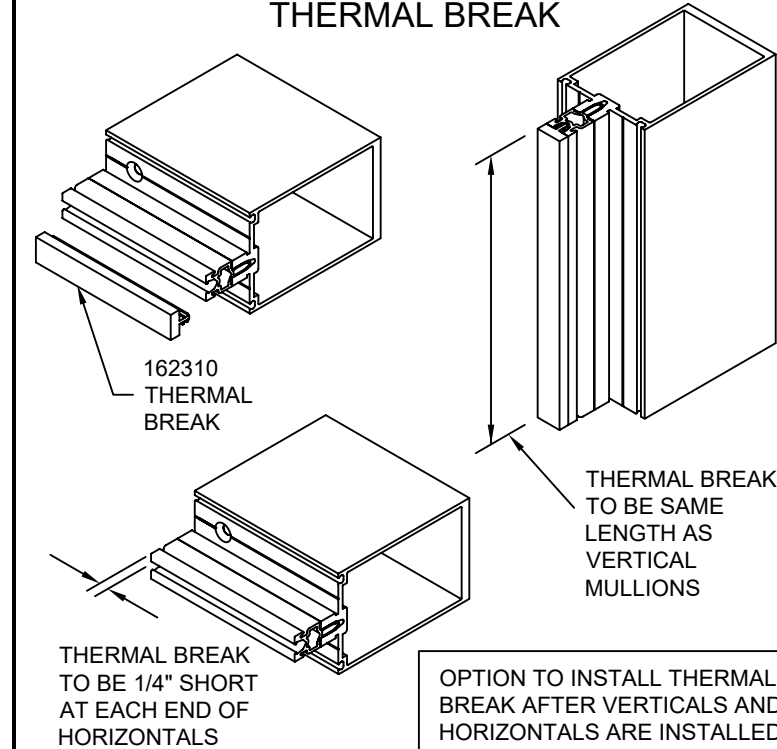


DO NOT STRETCH WHEN REMOVING FROM COIL AND CARTON

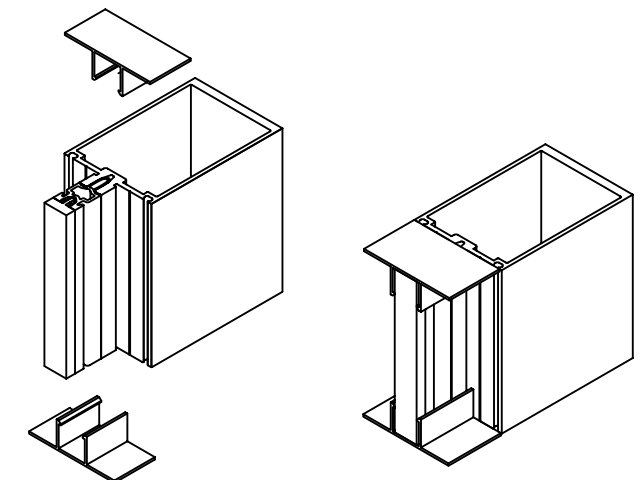
DO NOT STRETCH DURING INSTALLATION



**STEP - 5 INSTALL 162310 THERMAL BREAK**



INSTALL HEAD AND SILL END CAPS WHERE APPLICABLE  
171309 1" FRAMING  
171308 1-3/4" FRAMING  
SET IN SEALANT



1600UT SYSTEM 1  
INSTALLATION  
INSTRUCTIONS

Product Engineering & Development

97904-228  
03/10/22

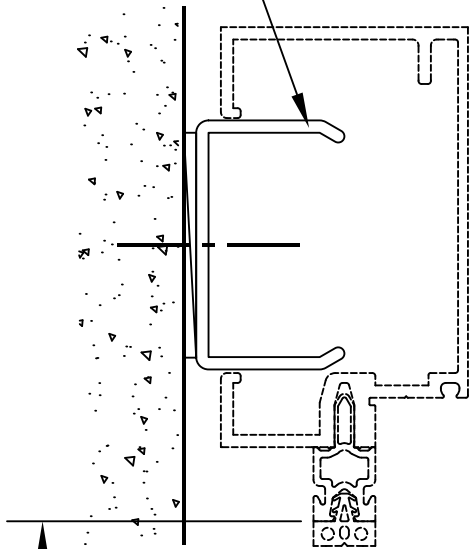
171910 SHEET 02 OF 09

Laws and building and safety codes governing the design and use of Kawneer products, such as glazed entrance, window, and curtain wall products, vary widely. Kawneer does not control the selection of product configurations, operating hardware, or glazing materials, and assumes no responsibility therefor. It is the responsibility of the owner, the specifier, the architect, the general contractor, and the installer and the fabricator/transformer, consistent with their roles, to determine the appropriate materials for a project in strict conformity to all applicable national, regional and local building codes and regulations. Kawneer reserves the right to change configuration without prior notice when deemed necessary for product improvement. © 2011, Kawneer Company, Inc.

**STEP - 6 PERIMETERS WHERE APPLICABLE**

INSTALL "C" CHANNEL AT JAMBS PER APPROVED SHOP DRAWINGS.

"C" CHANNEL WITH MAX. 1/8" SHIM SPACE AT JAMB



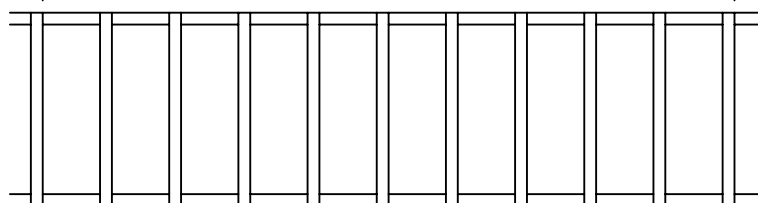
BENCHMARK TO FACE OF PERIMETER MEMBER PER APPROVED SHOP DRAWINGS

**STEP - 7 INSTALL VERTICAL MULLIONS**

DIMENSION BUILD-UP CHECK

CHECK OVERALL FRAME DIMENSIONS ABOUT EVERY FIVE MULLIONS ON LONG RUNS. THIS IS TO AVOID DIMENSIONAL BUILD-UP.

10 UNITS CHECK DIMENSION



5 UNITS CHECK DIM.

**STEP - 7 INSTALL VERTICAL MULLIONS**

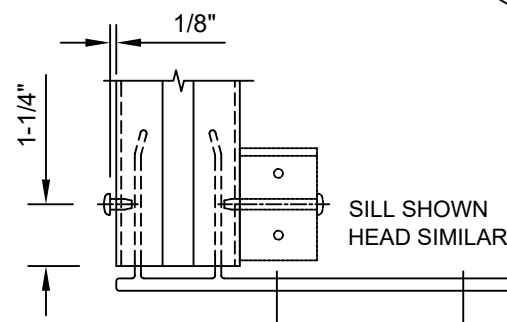
"F" OR "T" ANCHORS WHERE APPLICABLE

"F" AND "T" ANCHOR FASTENER LOCATIONS PER APPROVED SHOP DRAWINGS

THESE SHEAR BLOCKS MAY NEED TO BE REMOVED TO INSTALL AN ANCHOR FASTENER THAT MIGHT BE LOCATED CLOSE TO THE MULLION

"F" & "T" ANCHOR FASTENER LOCATIONS PER APPROVED SHOP DRAWINGS

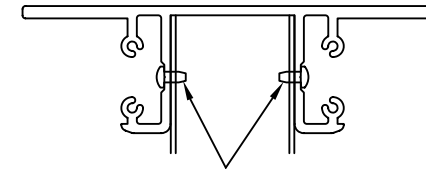
AT MULLION JAMB SIDE, APPLY (2) 128396 SCREWS AS SHOWN TO CENTER F-CLIPS AS REQUIRED.



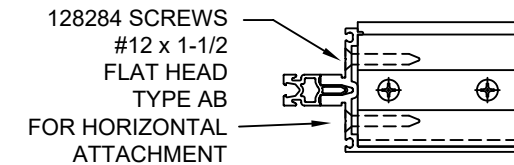
**STEP - 7 INSTALL VERTICAL MULLIONS**

HEAD/SILL SHEAR BLOCK/ANCHOR WHERE APPLICABLE.

162314 6" & 6-3/4" SYSTEM AT JAMBS  
162315 7-1/2" & 8-1/4" SYSTEM AT JAMBS  
162342 6" & 6-3/4" SYSTEM AT MULLIONS  
162343 7-1/2" & 8-1/4" SYSTEM AT MULLIONS



128396 SCREWS #12 x 7/16" PAN HEAD TYPE B

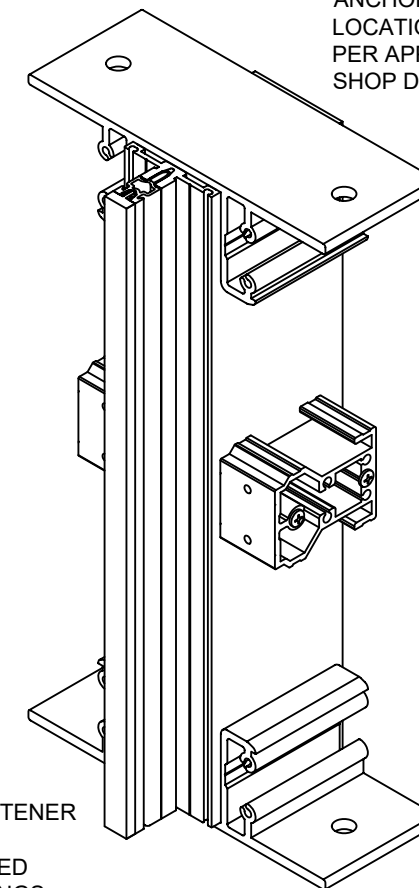


128284 SCREWS #12 x 1-1/2" FLAT HEAD TYPE AB FOR HORIZONTAL ATTACHMENT

THE ABOVE SCREWS ARE ONLY USED AT THE OPTIONAL SHEAR BLOCK/ANCHORS.

STRUCTURAL SHIMMING IS REQUIRED AT SILL TO ACCOMPLISH DESIGNED PERIMETER SEAL WIDTH.

ANCHOR FASTENER LOCATIONS PER APPROVED SHOP DRAWINGS

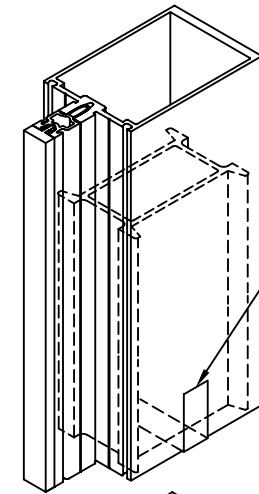


ANCHOR FASTENER LOCATIONS PER APPROVED SHOP DRAWINGS

**STEP - 7**

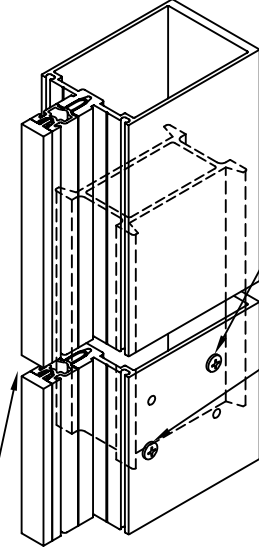
**INSTALL VERTICAL MULLIONS**

VERTICAL SPLICE JOINTS WHERE APPLICABLE.



SLEEVE IS FACTORY TAPED ONTO THE BOTTOM OF THE TOP VERTICAL

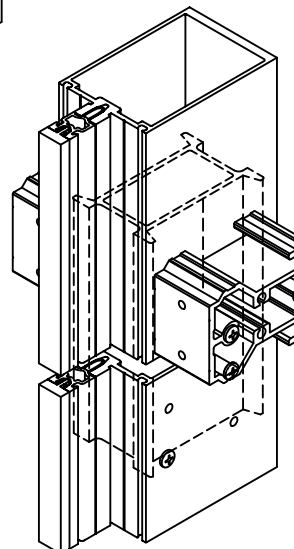
REMOVE THE TAPE AND LET THE SLEEVE SLIDE DOWN TO THE FACTORY APPLIED STOP SCREW



FIELD APPLIED FIXING SCREW 128348 #10 x 1-1/4" FLAT HEAD SELF DRILLING

SHOP APPLIED STOP SCREW 128267 #12 x 1" PAN HEAD TYPE AB

USE TEMPORARY SPACERS FOR JOINT DIMENSION



SPLICE JOINT WHEN IT OCCURS AT A HORIZONTAL.



1600UT SYSTEM 1 INSTALLATION INSTRUCTIONS

Product Engineering & Development

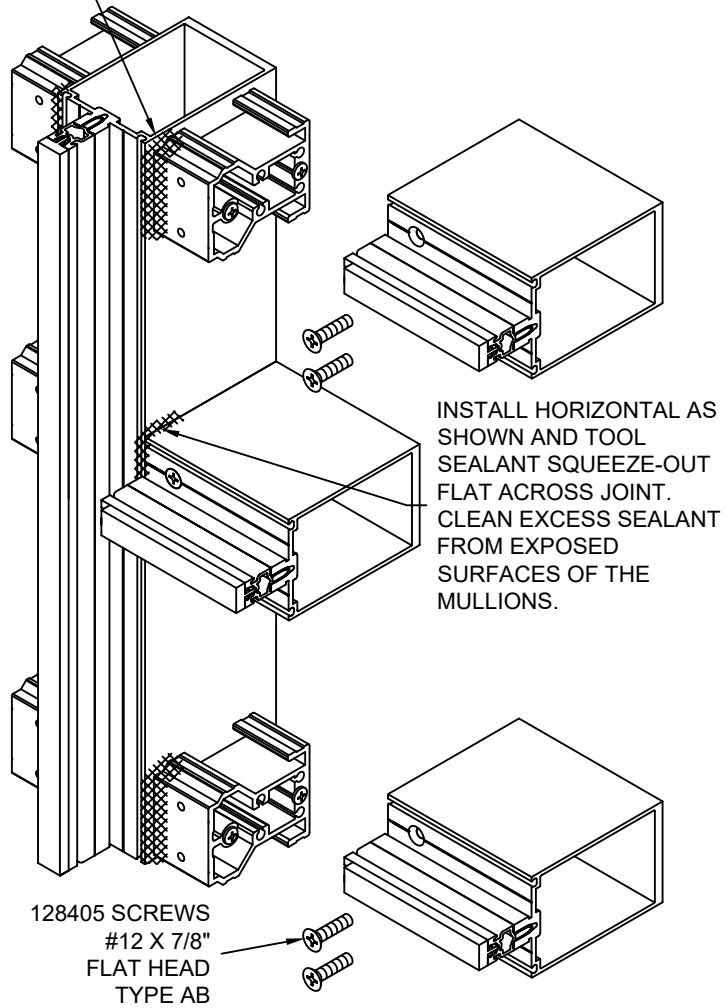
97904-228  
03/10/22

171910 SHEET 03 OF 09

**STEP - 8 INSTALL HEAD/SILL AND INTERMEDIATE HORIZONTALS**

**TUBULAR HORIZONTALS**

JUST BEFORE ATTACHING HORIZONTALS, APPLY A BEAD OF SEALANT INTO THE CORNER FORMED BY THE FRONT FACE OF THE SHEAR BLOCK AND THE SIDE OF THE MULLION. FILL THE SPACE WITH A BEAD OF SEALANT LARGE ENOUGH TO EXTEND PAST THE FRONT EDGE OF THE MULLION. WRAP THE BEAD 3/4" AROUND THE TOP AND BOTTOM OF THE SHEAR BLOCK AS SHOWN. PRIOR TO APPLYING SEALANT, CLEAN EACH JOINT PER SEALANT MANUFACTURER INSTRUCTIONS.



INSTALL HORIZONTAL AS SHOWN AND TOOL SEALANT SQUEEZE-OUT FLAT ACROSS JOINT. CLEAN EXCESS SEALANT FROM EXPOSED SURFACES OF THE MULLIONS.

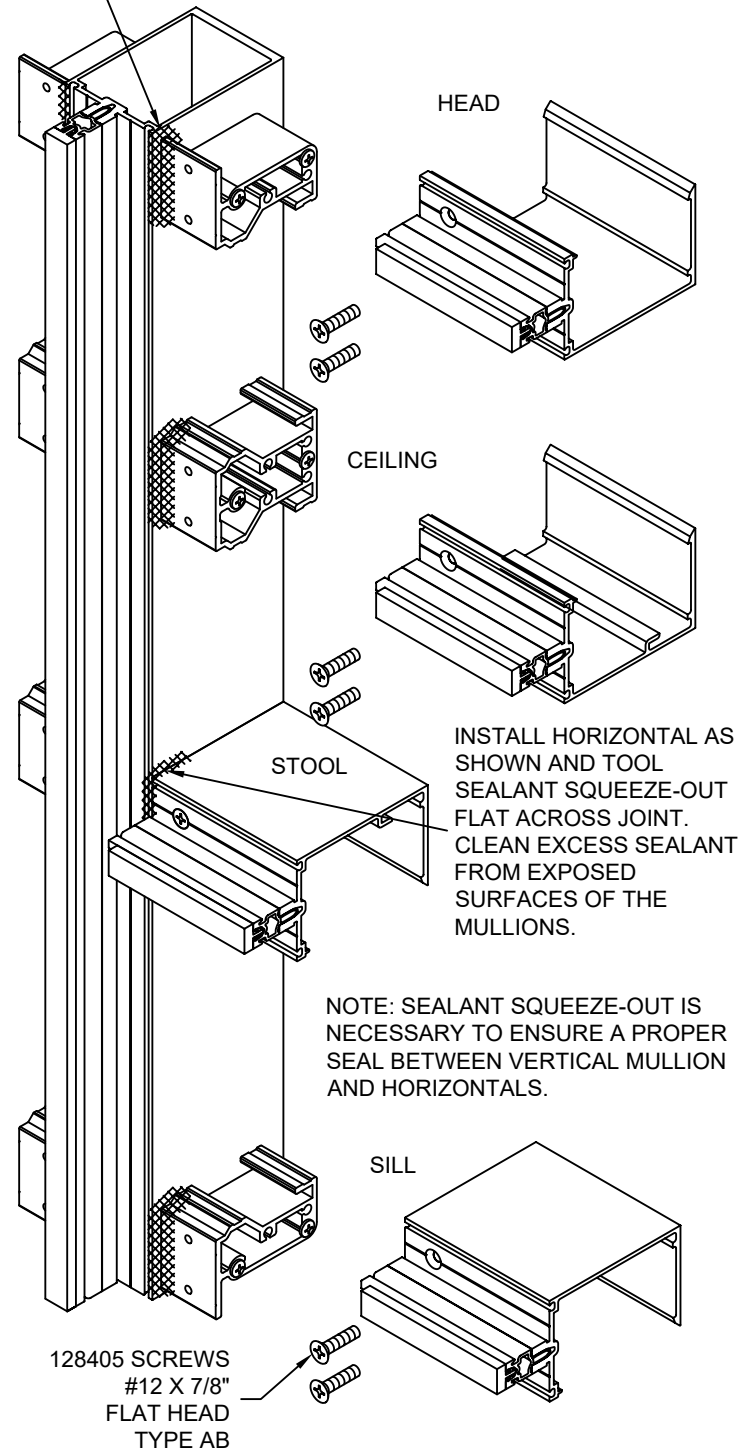
NOTE: SEALANT SQUEEZE-OUT IS NECESSARY TO ENSURE A PROPER SEAL BETWEEN VERTICAL MULLION AND HORIZONTALS.

THERMAL BREAK TO BE 1/4" SHORT AT EACH END OF HORIZONTALS

**STEP - 8 INSTALL HEAD/SILL AND INTERMEDIATE HORIZONTALS**

OPEN BACK HORIZONTALS AND LAST BAY HORIZONTALS. FILLER AVAILABLE WHEN OPEN BACK IS EXPOSED AND AT EYE LEVEL.

JUST BEFORE ATTACHING HORIZONTALS, APPLY A BEAD OF SEALANT INTO THE CORNER FORMED BY THE FRONT FACE OF THE SHEAR BLOCK AND THE SIDE OF THE MULLION. FILL THE SPACE WITH A BEAD OF SEALANT LARGE ENOUGH TO EXTEND PAST THE FRONT EDGE OF THE MULLION. WRAP THE BEAD 3/4" AROUND THE TOP AND BOTTOM OF THE SHEAR BLOCK AS SHOWN. PRIOR TO APPLYING SEALANT, CLEAN EACH JOINT PER SEALANT MANUFACTURER INSTRUCTIONS.



HEAD

CEILING

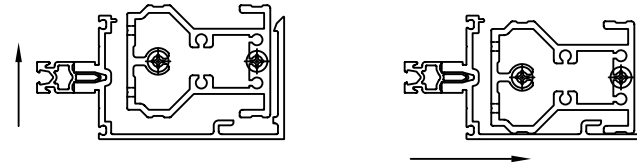
STOOL

SILL

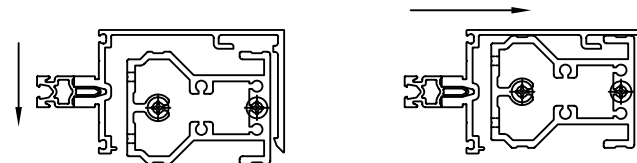
INSTALL HORIZONTAL AS SHOWN AND TOOL SEALANT SQUEEZE-OUT FLAT ACROSS JOINT. CLEAN EXCESS SEALANT FROM EXPOSED SURFACES OF THE MULLIONS.

NOTE: SEALANT SQUEEZE-OUT IS NECESSARY TO ENSURE A PROPER SEAL BETWEEN VERTICAL MULLION AND HORIZONTALS.

**INSTALLING CEILING INTERMEDIATE OPEN BACK HORIZONTAL**



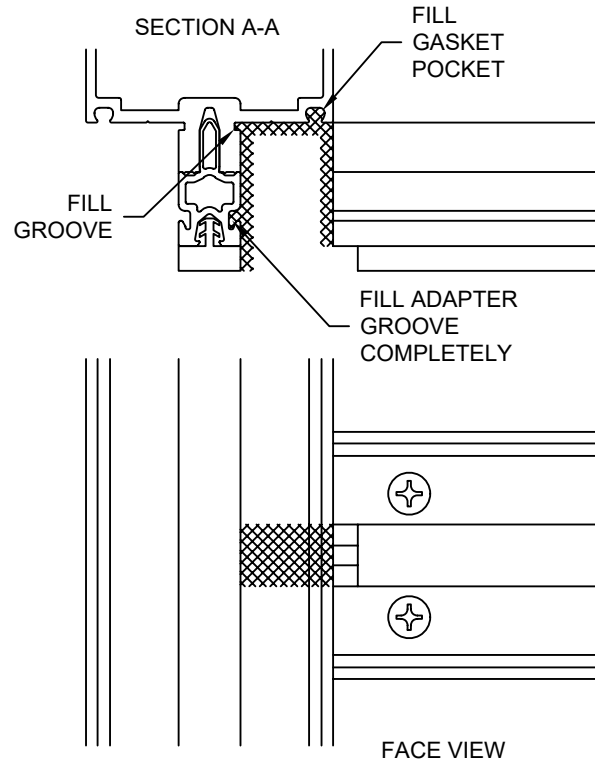
**INSTALLING STOOL INTERMEDIATE OPEN BACK HORIZONTAL**



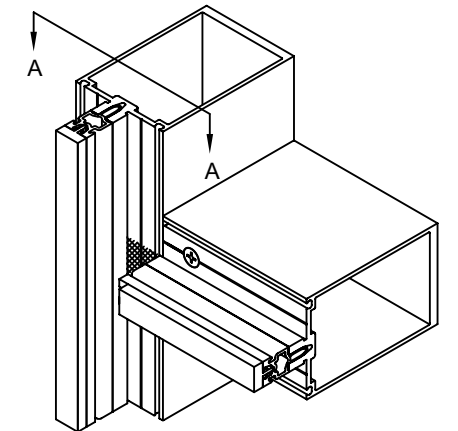
**STEP - 9 INSTALL JOINT PLUGS**

ALL SURFACES AND GROOVES MUST BE CLEANED PER THE SEALANT MANUFACTURER'S RECOMMENDATIONS.

JUST BEFORE INSTALLING JOINT PLUGS APPLY SEALANT AS SHOWN FILLING GASKET POCKET AND ADAPTER GROOVE. ENSURE THAT THE MULLION TONGUE RACEWAY AND THERMAL SEPARATOR IS SEALED AND COMPLETELY FILLED AT PLUG LOCATION.

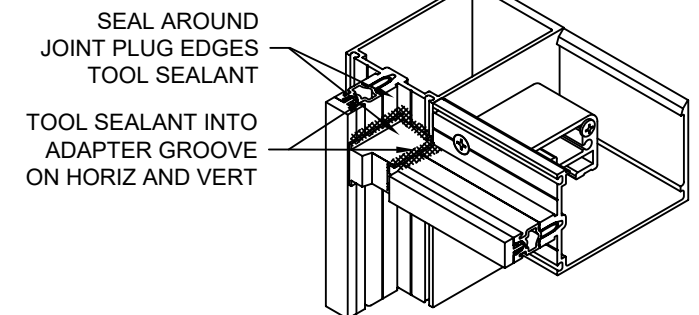
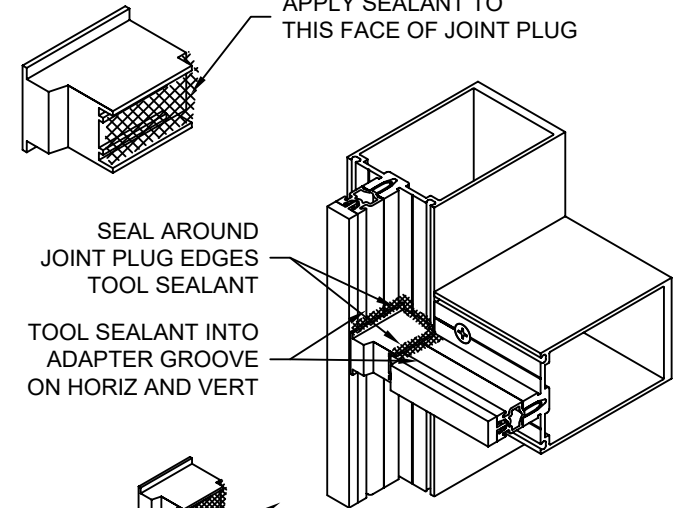


Laws and building and safety codes governing the design and use of Kawneer products, such as glazed entrance, window, and curtain wall products, vary widely. Kawneer does not control the selection of product configurations, operating hardware, or glazing materials, and assumes no responsibility therefor. It is the responsibility of the owner, the specifier, the architect, the general contractor, and the installer and the fabricator/transformer, consistent with their roles, to determine the appropriate materials for a project in strict conformity to all applicable national, regional and local building codes and regulations. Kawneer reserves the right to change configuration without prior notice when deemed necessary for product improvement. © 2011, Kawneer Company, Inc.



JOINT PLUG  
162321 1" FRAME  
171307 1-3/4" FRAME

APPLY SEALANT TO THIS FACE OF JOINT PLUG



1600UT SYSTEM 1  
INSTALLATION  
INSTRUCTIONS

Product Engineering & Development

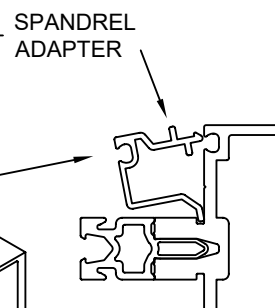
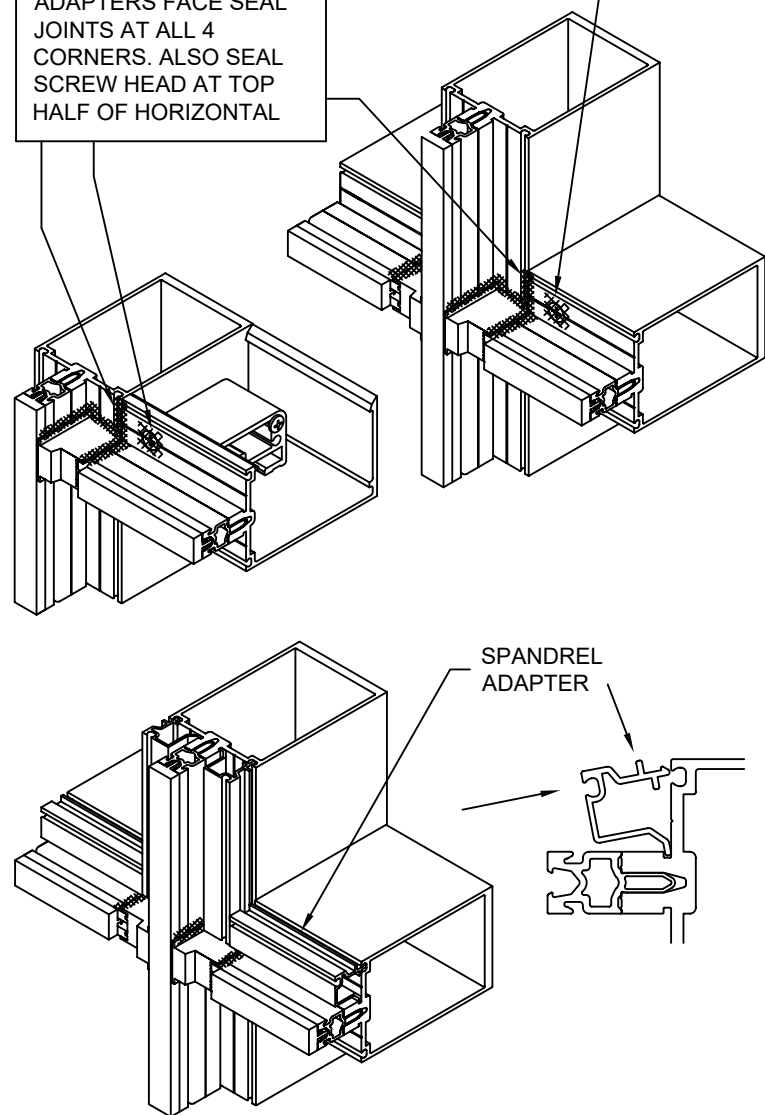
97904-228  
03/10/22

171910 SHEET 04 OF 09

**STEP - 10** INSTALL SPANDREL ADAPTERS WHERE APPLICABLE

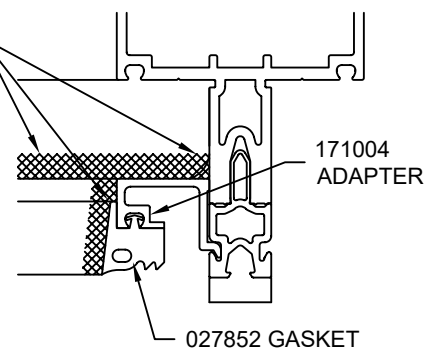
ALL SURFACES AND GROOVES MUST BE CLEANED PER THE SEALANT MANUFACTURER'S RECOMMENDATIONS.

JUST BEFORE INSTALLING FILLERS AND SPANDREL ADAPTERS FACE SEAL JOINTS AT ALL 4 CORNERS. ALSO SEAL SCREW HEAD AT TOP HALF OF HORIZONTAL

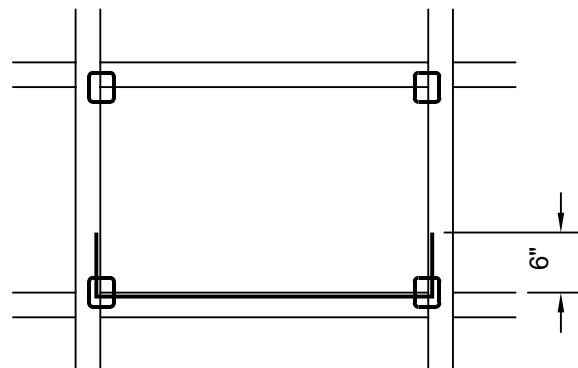


WHEN USING 171004 ADAPTER AS 1/8" INFILL ADAPTER

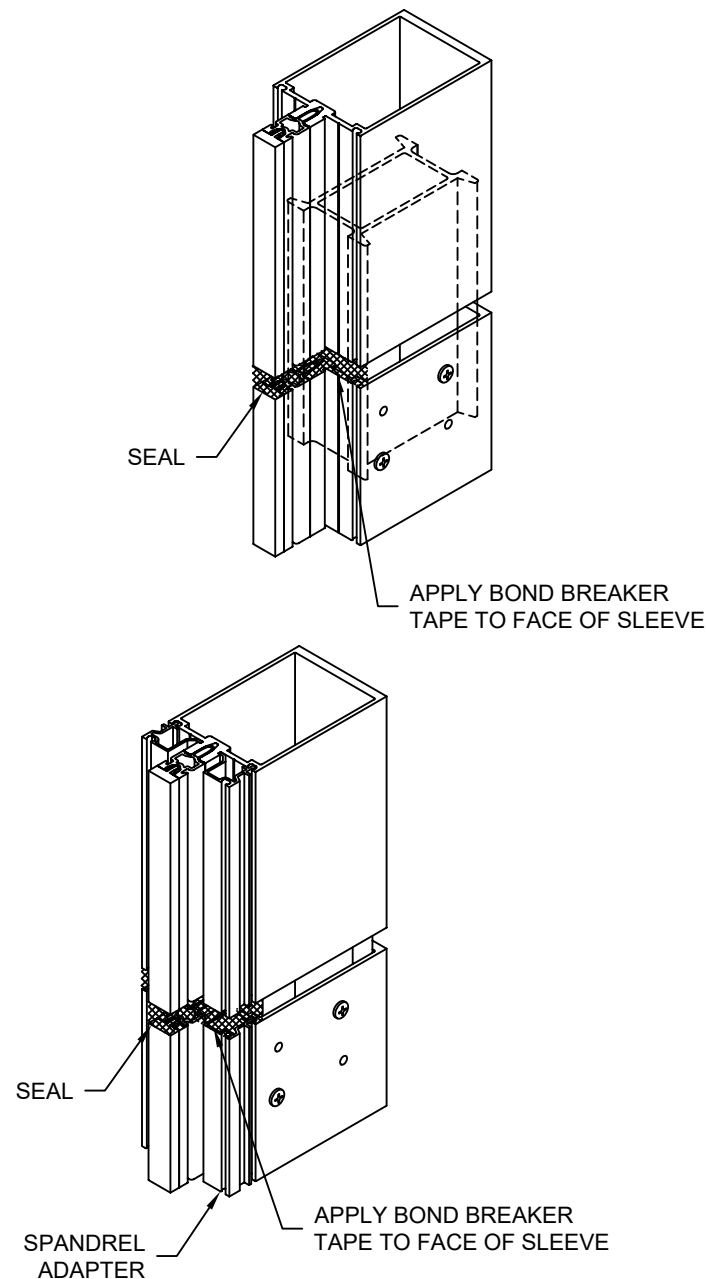
APPLY & TOOL SEALANT AT ALL FOUR ADAPTER CORNER JOINTS, ALONG ENTIRE LENGTH OF BOTTOM ADAPTER & 6" UP EACH JAMB AS SHOWN



WHEN USING 171004 ADAPTER AS 1/8" INFILL ADAPTER



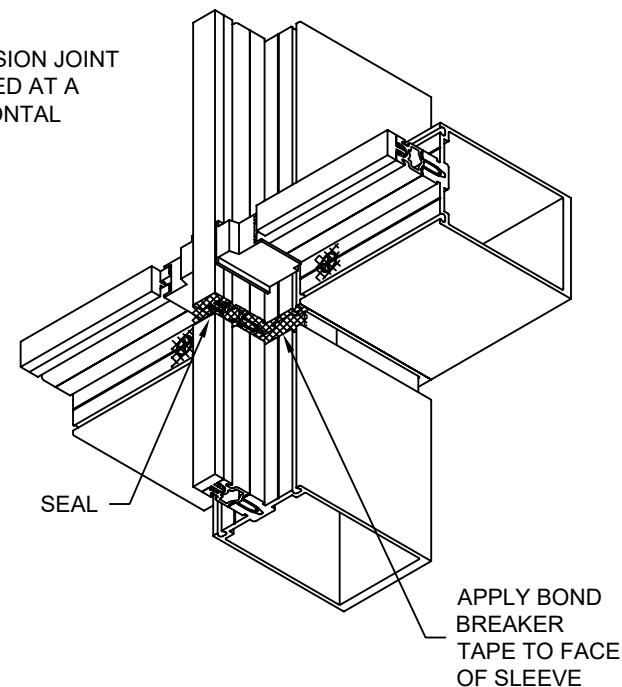
**STEP - 11** SEAL INTERIOR OF VERTICAL SPLICE JOINTS



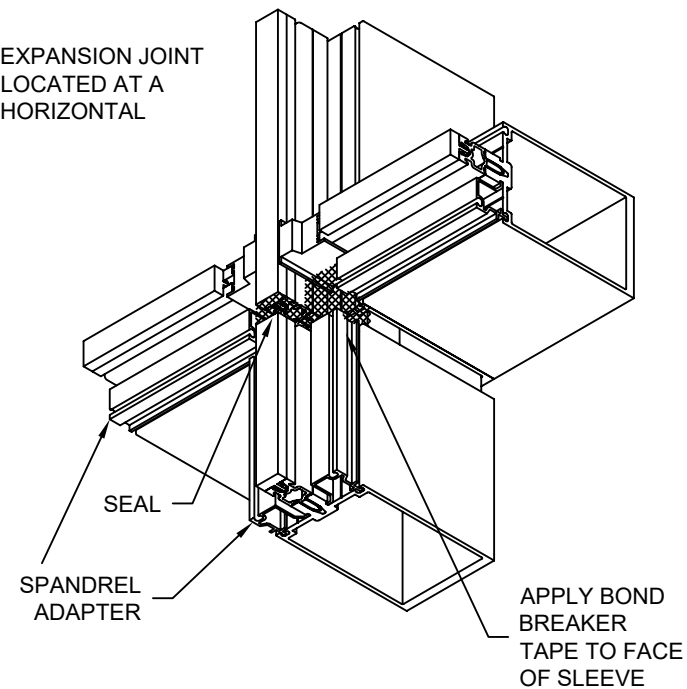
**STEP - 11** SEAL INTERIOR OF VERTICAL SPLICE JOINTS

ALL SURFACES AND GROOVES MUST BE CLEANED PER THE SEALANT MANUFACTURER'S RECOMMENDATIONS.

EXPANSION JOINT LOCATED AT A HORIZONTAL



EXPANSION JOINT LOCATED AT A HORIZONTAL



Laws and building and safety codes governing the design and use of Kawneer products, such as glazed entrance, window, and curtain wall products, vary widely. Kawneer does not control the selection of product configurations, operating hardware, or glazing materials, and assumes no responsibility therefor. It is the responsibility of the owner, the specifier, the architect, the general contractor, and the installer and the fabricator/transformer, consistent with their roles, to determine the appropriate materials for a project in strict conformity to all applicable national, regional and local building codes and regulations. Kawneer reserves the right to change configuration without prior notice when deemed necessary for product improvement. © 2011, Kawneer Company, Inc.

**STEP - 12** INSTALL INTERIOR GLAZING GASKETS

GASKETS SHOULD BE INSTALLED JUST PRIOR TO GLASS TO AVOID CONTAMINATION BY JOB SITE DEBRIS. GASKET GROOVES AND POCKETS SHOULD BE CLEAN.

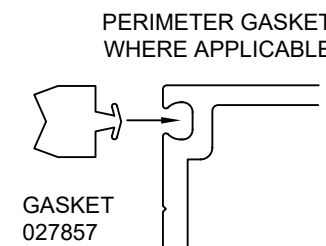
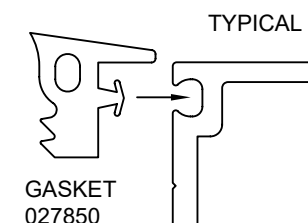
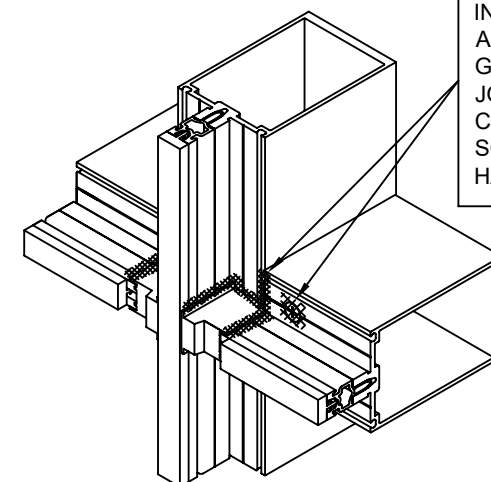
IN TEMPERATURES COLDER THAN 50° F ARRANGEMENTS SHOULD BE MADE TO WARM GASKETS BEFORE INSTALLATION. THIS WILL PREVENT EXCESSIVE GLAZING PRESSURE ON THE GLASS DUE TO COLD, STIFF RUBBER GASKETS.

GASKETS CAN BECOME DEFORMED DURING STORAGE IN CARTONS. THEY SHOULD BE REMOVED FROM CARTONS SEVERAL HOURS PRIOR TO GLAZING AND LAID FLAT OR HUNG TO ALLOW RECOVERY OF CORRECT SHAPE. TEMPERATURES SHOULD BE AT LEAST 50° F TO ALLOW THIS.

GASKET INSTALLED LENGTH TO BE DAYLITE OPENING. GASKETS TO BE CUT LONG FOR SOME "CROWD-IN". GASKETS SHOULD NEVER BE "STRETCHED TO FIT".

"CROWD-IN" TO BE 1/8" PER FOOT UP TO 5' 0", 3/16" PER FOOT UP TO 8' 0", 1/4" PER FOOT OVER 8' 0".

JUST BEFORE INSTALLING VERTICAL AND HORIZONTAL GASKETS FACE SEAL JOINTS AT ALL 4 CORNERS. ALSO SEAL SCREW HEAD AT TOP HALF OF HORIZONTAL



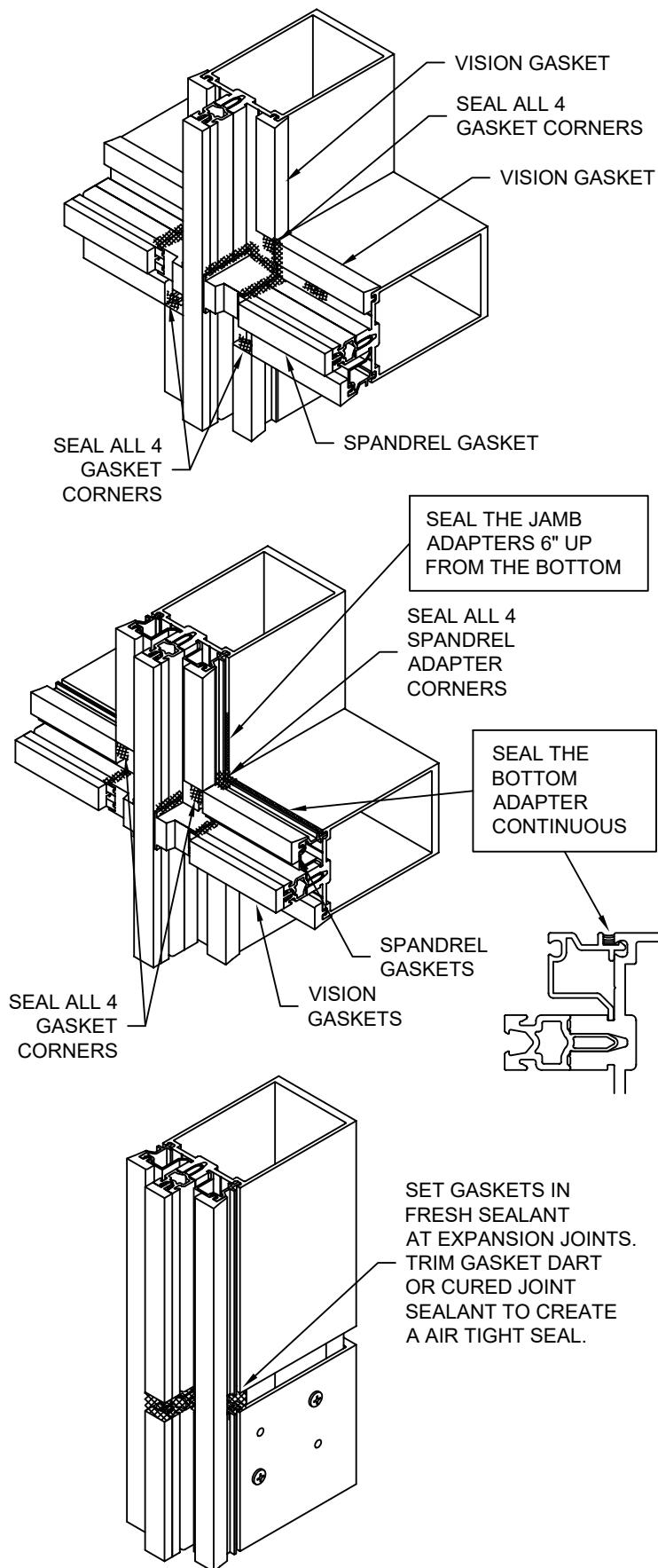
1600UT SYSTEM 1 INSTALLATION INSTRUCTIONS

Product Engineering & Development

97904-228  
03/10/22

171910 SHEET 05 OF 09

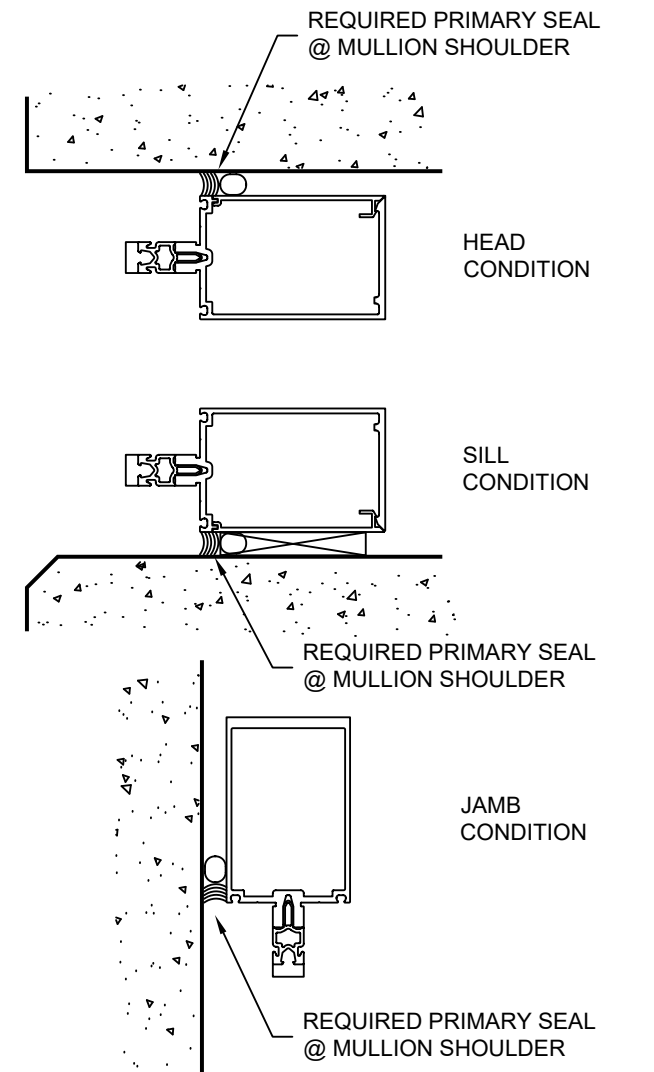
**STEP - 12 INSTALL INTERIOR GLAZING GASKETS**



**STEP - 13 INSTALL PERIMETER SEAL AT MULLION SHOULDER**

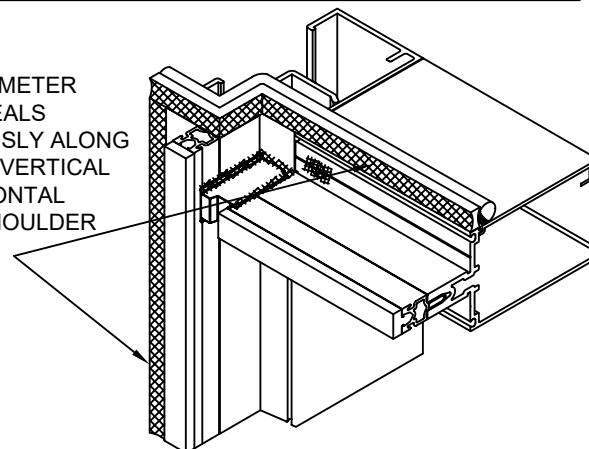
PERIMETER PRIMARY SEALS ARE REQUIRED TO BE INSTALLED AT THE MULLION SHOULDER AND MUST BE APPLIED BEFORE PRESSURE PLATES ARE INSTALLED.

FOR PERIMETER WEATHER SEALS AT THE PRESSURE PLATE GO TO STEP 19. INSTALL SUITABLY SIZED BACKER ROD AND APPLY GENEROUS, CONTINUOUS BEAD OF SEALANT AS SHOWN.

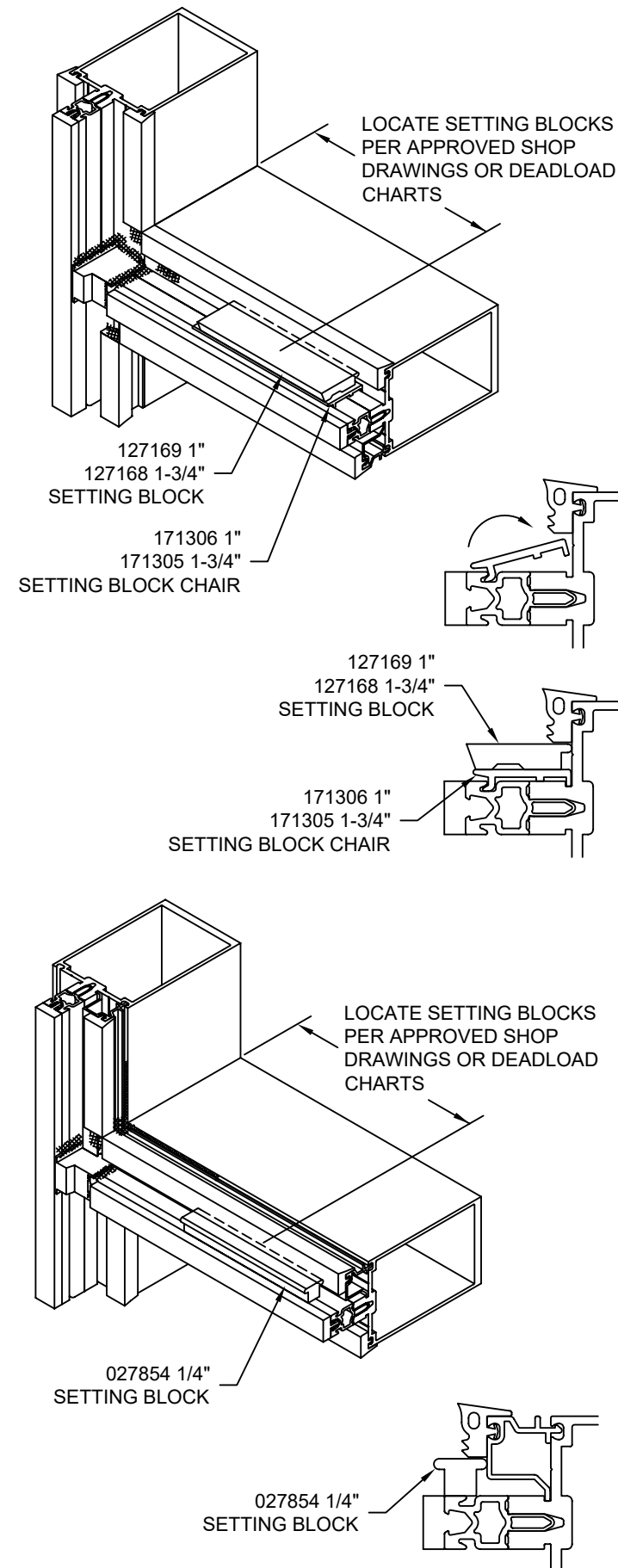


INSTALL PERIMETER SEALANT FOR PERIMETER APPLICATION

APPLY PERIMETER PRIMARY SEALS CONTINUOUSLY ALONG LENGTH OF VERTICAL AND HORIZONTAL MULLION SHOULDER AS SHOWN

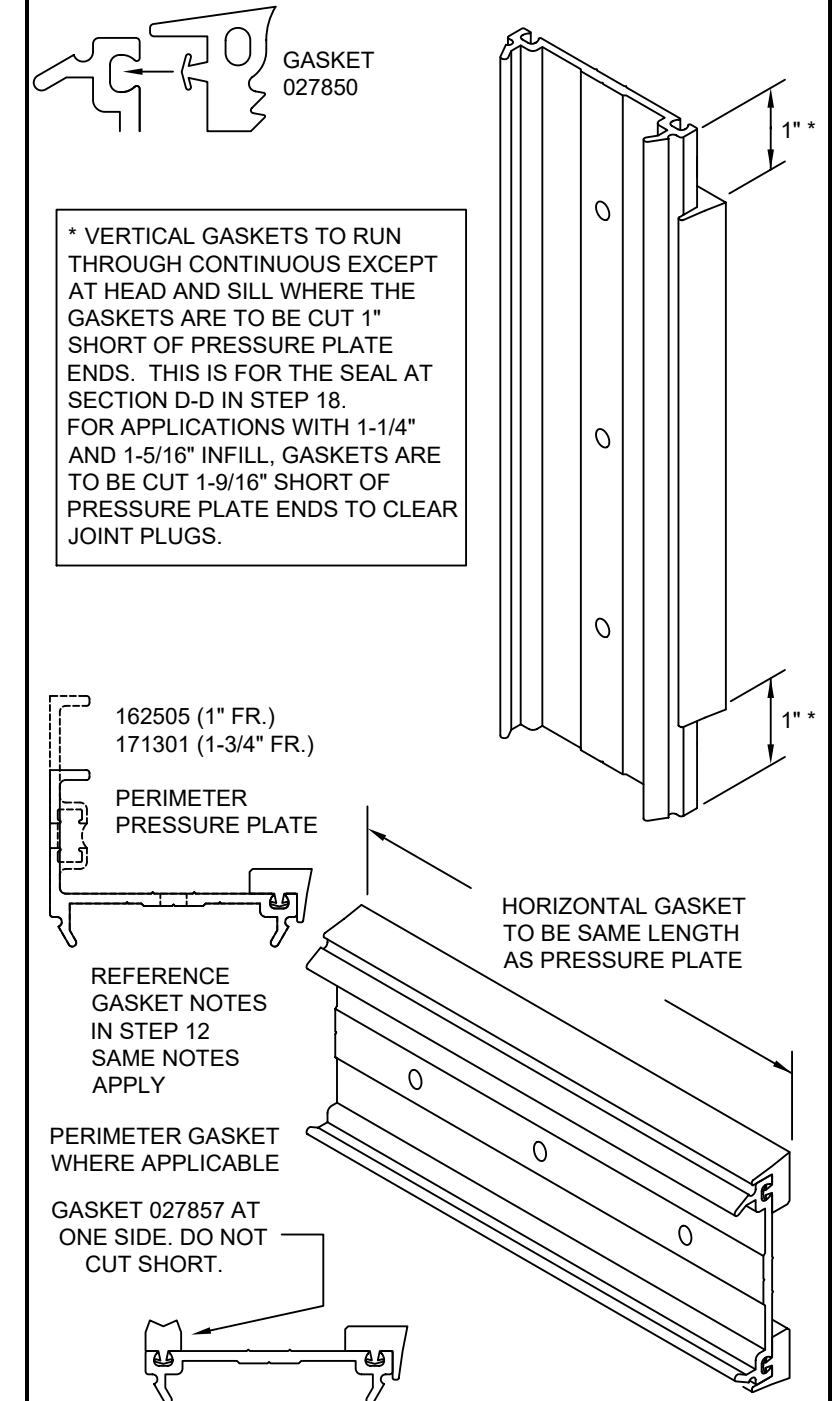


**STEP - 14 INSTALL SETTING BLOCKS**



Laws and building and safety codes governing the design and use of Kawneer products, such as glazed entrance, window, and curtain wall products, vary widely. Kawneer does not control the selection of product configurations, operating hardware, or glazing materials, and assumes no responsibility therefor. It is the responsibility of the owner, the specifier, the architect, the general contractor, and the installer and the fabricator/transformer, consistent with their roles, to determine the appropriate materials for a project in strict conformity to all applicable national, regional and local building codes and regulations. Kawneer reserves the right to change configuration without prior notice when deemed necessary for product improvement. © 2011, Kawneer Company, Inc.

**STEP - 15 INSTALL EXTERIOR GASKETS INTO PRESSURE PLATES**

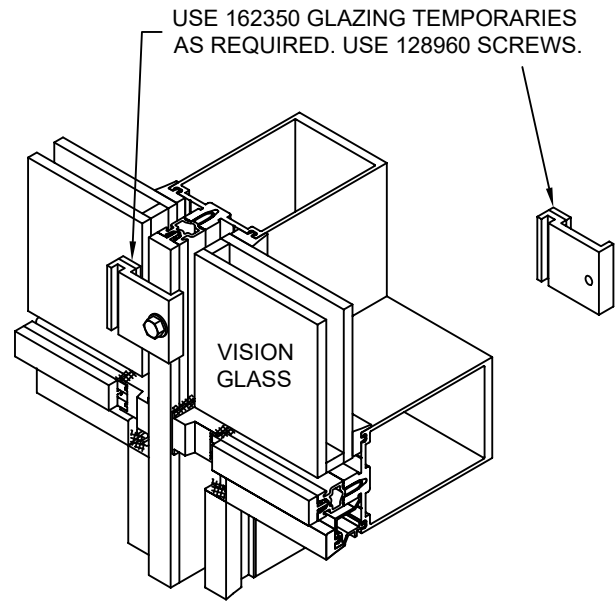


1600UT SYSTEM 1  
INSTALLATION  
INSTRUCTIONS

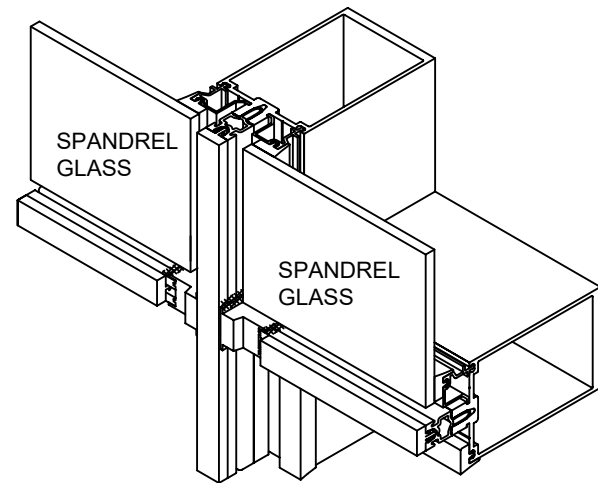
Product Engineering & Development

97904-228  
03/10/22

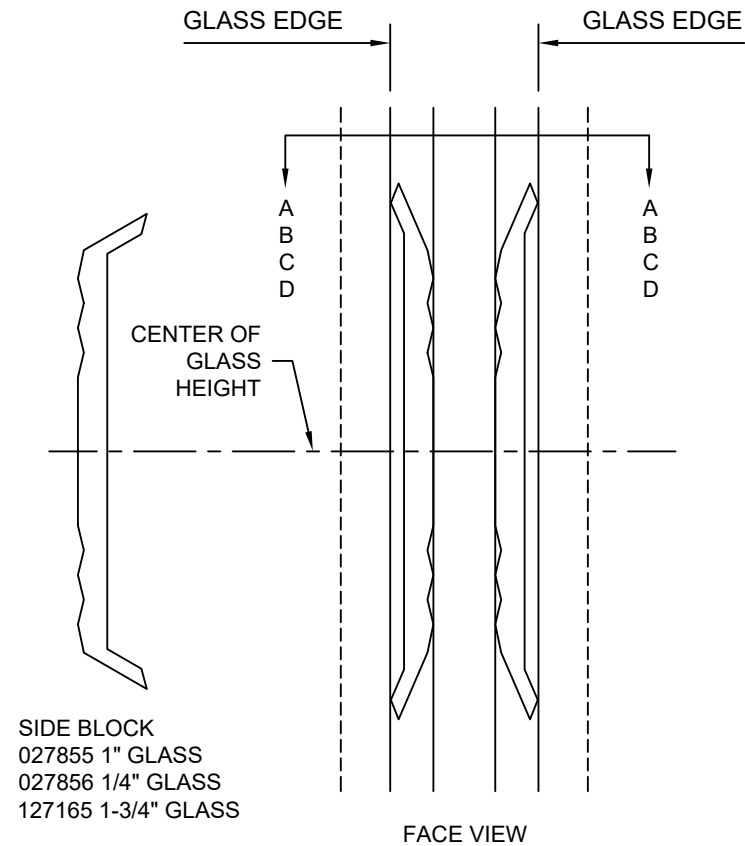
**STEP - 16 INSTALL GLASS**



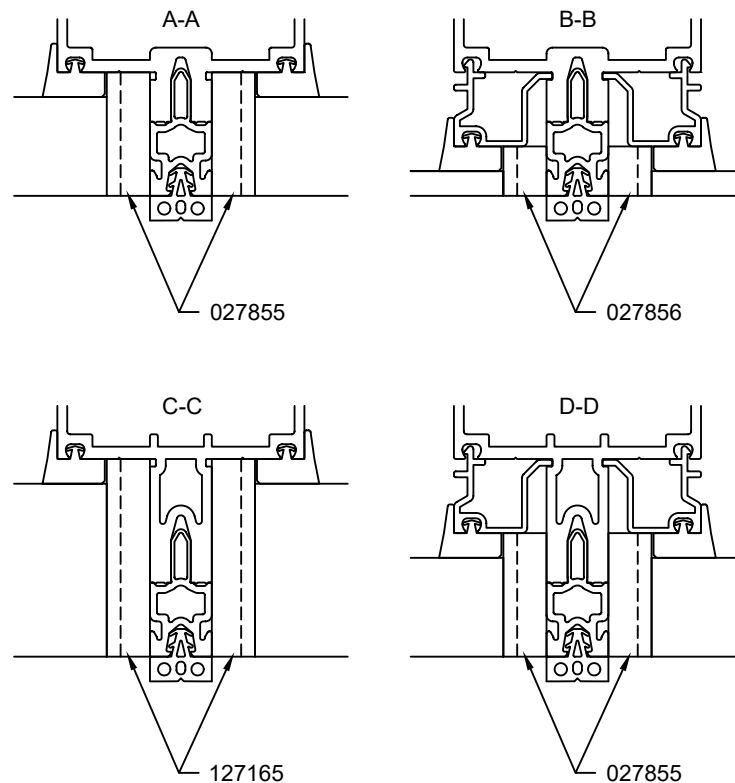
MAXIMUM TEMPORARY SPACING IS 30". IF WINDS GREATER THAN 50 MPH (80KPH) ARE EXPECTED, ADDITIONAL TEMPORARIES MAY BE REQUIRED. CONSULT YOUR SEALANT AND/OR INFILL SUPPLIER FOR SPACING RECOMMENDATIONS. INSTALL PRESSURE PLATES WHERE POSSIBLE.



**STEP - 17 INSTALL SIDE BLOCKS**



INSTALL SIDE BLOCKS COMPRESSING AS SHOWN



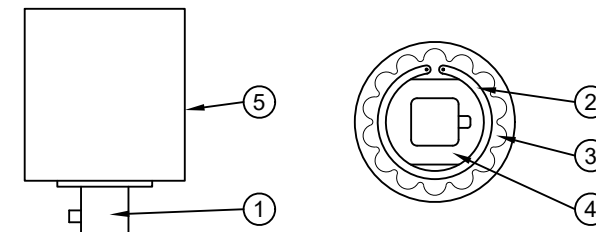
**STEP - 18 INSTALL EXTERIOR PRESSURE PLATES**



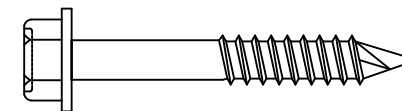
RECOMMEND USING TORQUE LIMIT TOOL 162399 SEE NOTE.

**HOW TO SET TORQUE LIMIT**

1. ATTACH ANY CALIBRATED TORQUE INDICATOR TO OUTPUT STUB (1) AND DETERMINE PRESENT TORQUE SETTING WHILE HOLDING THE BODY (5), OR VICE-VERSA.
2. REMOVE SNAP RING (2) AND LOCKING PLATE (3).
3. ADJUST NUT (4) WITH OPEN-END WRENCH : CLOCKWISE TO INCREASE TORQUE, COUNTER-CLOCKWISE TO DECREASE TORQUE.
4. OBTAIN NEW TORQUE READING WITH THE CALIBRATED TORQUE INDICATOR. REPEAT PRECEDING STEP IF MORE ADJUSTMENT IS NECESSARY TO REACH DESIRED LIMIT.
5. REPLACE LOCKING PLATE INTO NOTCHES AND INSTALL SNAP RING. IF LOCKING PLATE DOES NOT "SEAT", MOVE THE ADJUSTING NUT SLIGHTLY UNTIL IT DROPS IN PLACE. THE DIRECTION IS BEST DETERMINED BY WHETHER A MINIMUM TORQUE APPLICATION OR A MAXIMUM ONE IS DESIRED.



INSTALL PRESSURE PLATES WITH 128960 SELF DRILLING SCREWS USING A NON-IMPACT DRIVER AT LOW SPEED.



SCREWS ARE TO BE LOCATED 9" ON CENTER MAXIMUM. FOR PROJECTS DESIGNED FOR WIND LOADS GREATER THAN 60 PSF, APPLY PRESSURE PLATES SCREWS AT 6" ON CENTER.

ALWAYS LOCATE A SCREW AS CLOSE AS POSSIBLE TO A HORIZONTAL JOINT. THIS WILL PROVIDE MAXIMUM PRESSURE FOR THE CRITICAL JOINT SEALS.

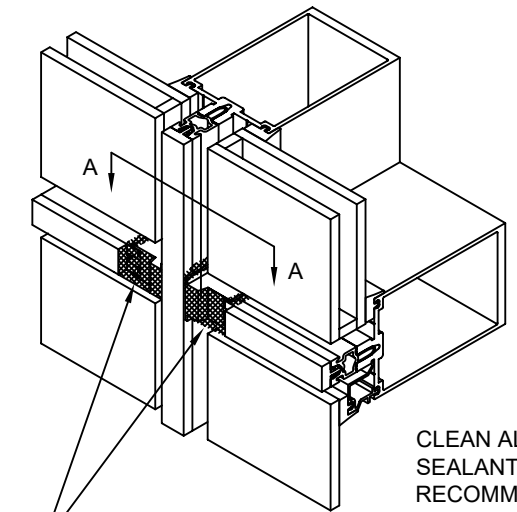
INSTALL HORIZONTAL PRESSURE PLATES WITH WEEP HOLES TOWARDS TOP OF HORIZONTAL.

AT EACH HORIZONTAL AND VERTICAL PRESSURE PLATE INSTALL TWO SCREWS PART WAY, THEN INSTALL THE THIRD SCREW ALL THE WAY, AND THEN TIGHTEN THE FIRST TWO SCREWS. THIS ELIMINATES LATERAL WALKING OF THE PRESSURE PLATE POSITION.

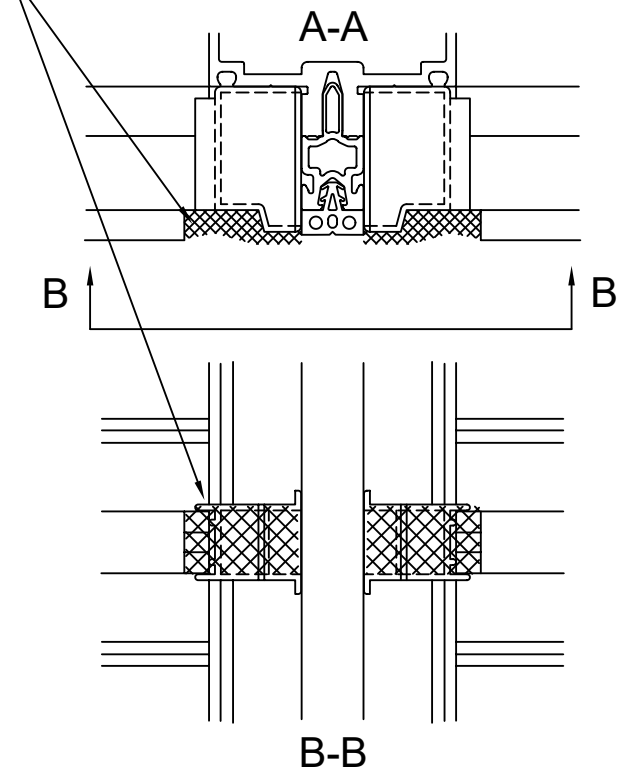
TORQUE ALL SCREWS TO 90 TO 100 INCH POUNDS. DURING COLD WEATHER, TORQUE SCREWS TO 50 INCH POUNDS UNTIL ALL 4 SIDES HAVE BEEN CLAMPED. THEN TORQUE SCREWS TO 90 TO 100 INCH POUNDS.

**171910 SHEET 07 OF 09**

Laws and building and safety codes governing the design and use of Kawneer products, such as glazed entrance, window, and curtain wall products, vary widely. Kawneer does not control the selection of product configurations, operating hardware, or glazing materials, and assumes no responsibility therefor. It is the responsibility of the owner, the specifier, the architect, the general contractor, and the installer and the fabricator/transformer, consistent with their roles, to determine the appropriate materials for a project in strict conformity to all applicable national, regional and local building codes and regulations. Kawneer reserves the right to change configuration without prior notice when deemed necessary for product improvement. © 2011, Kawneer Company, Inc.



JUST BEFORE INSTALLING VERTICAL PRESSURE PLATES APPLY A GENEROUS AMOUNT OF SEALANT TO THE JOINT PLUG FACE FILLING JOINTS AS SHOWN.



**KAWNEER**  
Product Engineering & Development

**1600UT SYSTEM 1  
INSTALLATION  
INSTRUCTIONS**

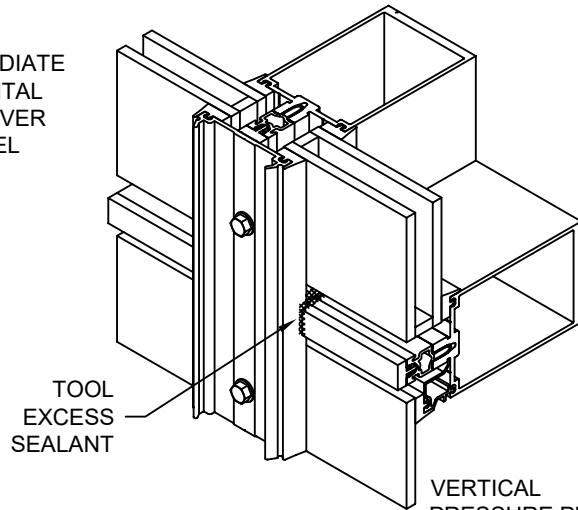


# STEP - 18 INSTALL EXTERIOR PRESSURE PLATES

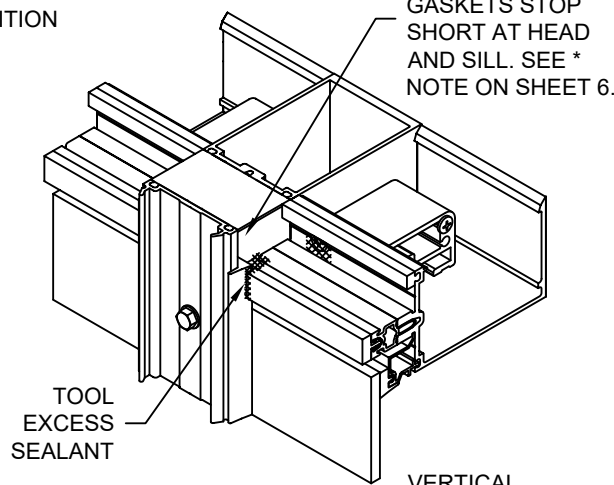
## INSTALL VERTICAL PRESSURE PLATES

NOTE - THE TORQUE LIMIT TOOL WAS DESIGNED TO BE USED WITH A HAND DRIVEN DEVICE. THE TOOL CAN BE ADAPTED TO A DRILL MOTOR IF USED AT A MAXIMUM SPEED OF APPROX. 300 RPM. HIGHER SPEEDS CAN CAUSE OVERHEATING AND AFFECT THE ACCURACY. AFTER APPROX. 1 HOUR OF TOOL USAGE CHECK TORQUE SETTINGS WITH A TORQUE WRENCH.

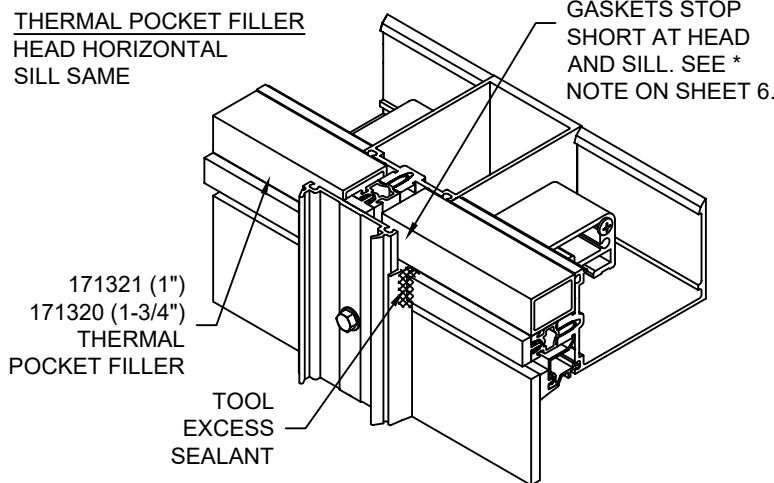
INTERMEDIATE HORIZONTAL VISION OVER SPANDREL



HEAD CONDITION SILL SAME



THERMAL POCKET FILLER HEAD HORIZONTAL SILL SAME

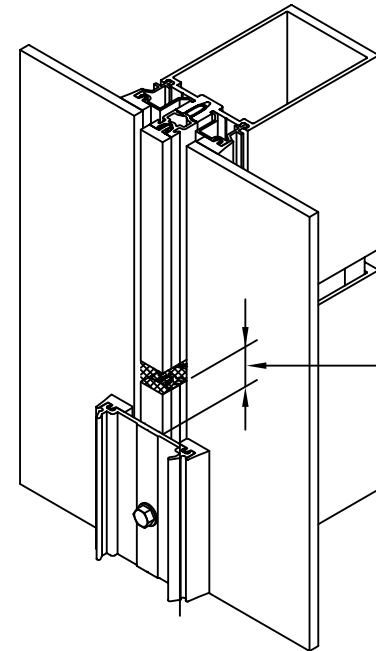


171321 (1")  
171320 (1-3/4")  
THERMAL POCKET FILLER

VERTICAL PRESSURE PLATE GASKETS STOP SHORT AT HEAD AND SILL. SEE \* NOTE ON SHEET 6.

VERTICAL PRESSURE PLATE GASKETS STOP SHORT AT HEAD AND SILL. SEE \* NOTE ON SHEET 6.

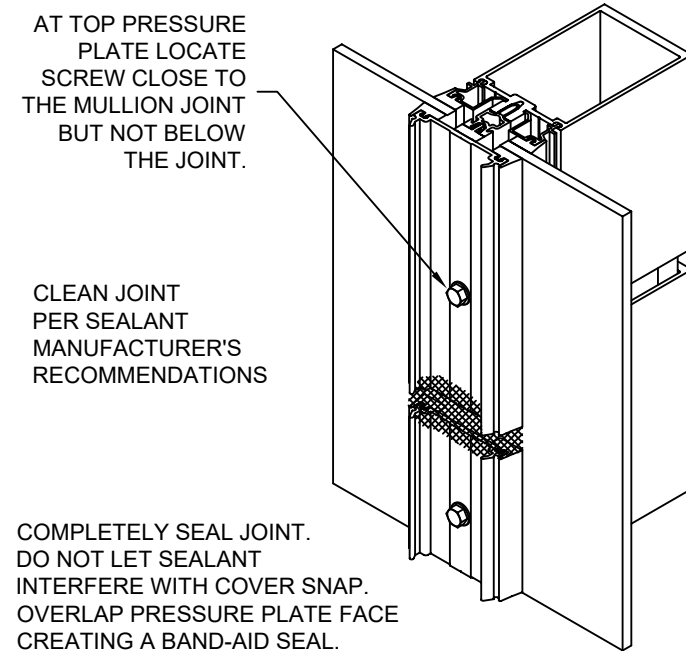
## VERTICAL EXPANSION JOINTS



TOP OF VERTICAL MULLION TO TOP OF PRESSURE PLATE IS 1-1/2"

AT TOP PRESSURE PLATE LOCATE SCREW CLOSE TO THE MULLION JOINT BUT NOT BELOW THE JOINT.

CLEAN JOINT PER SEALANT MANUFACTURER'S RECOMMENDATIONS

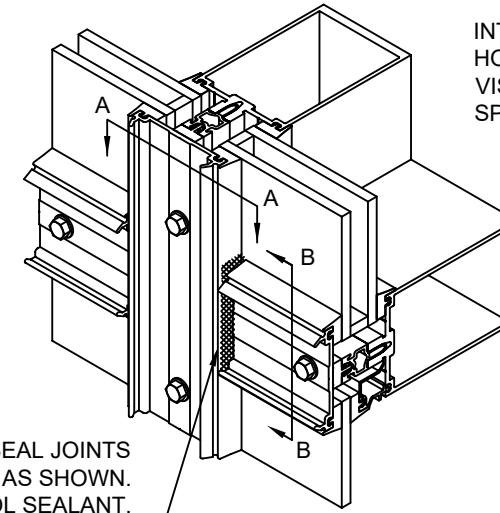


COMPLETELY SEAL JOINT. DO NOT LET SEALANT INTERFERE WITH COVER SNAP. OVERLAP PRESSURE PLATE FACE CREATING A BAND-AID SEAL.

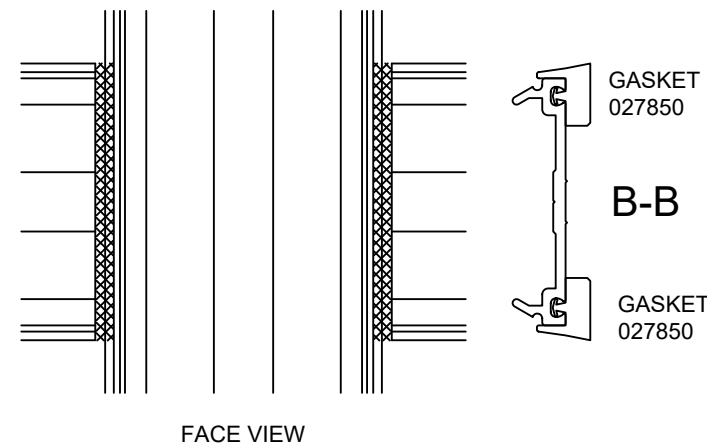
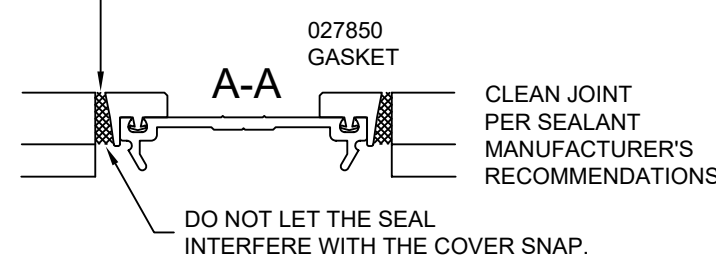
## INSTALL HORIZONTAL PRESSURE PLATES

CENTER HORIZONTAL PRESSURE PLATES SO END GAPS ARE EQUAL.

## INTERMEDIATE HORIZONTAL VISION OVER SPANDREL

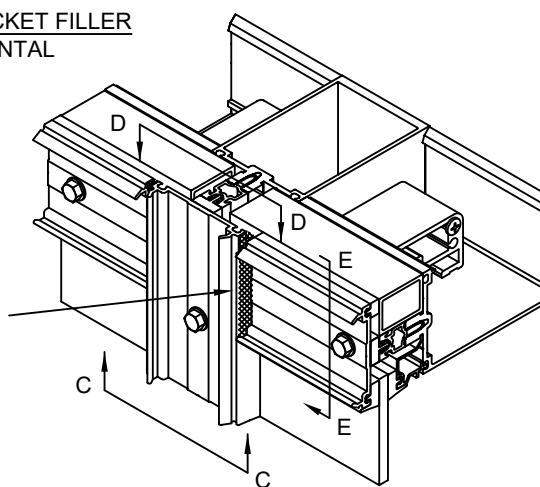


SEAL JOINTS AS SHOWN. TOOL SEALANT. THIS SEAL IS TO JOIN AND ADHERE TO THE JOINT PLUG SEALS.

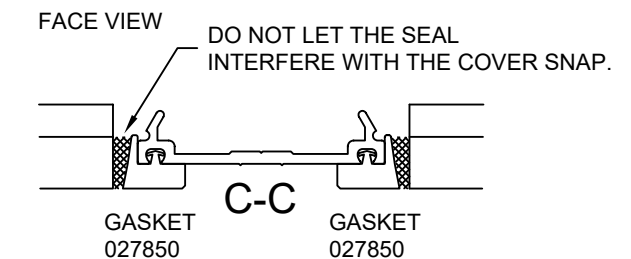
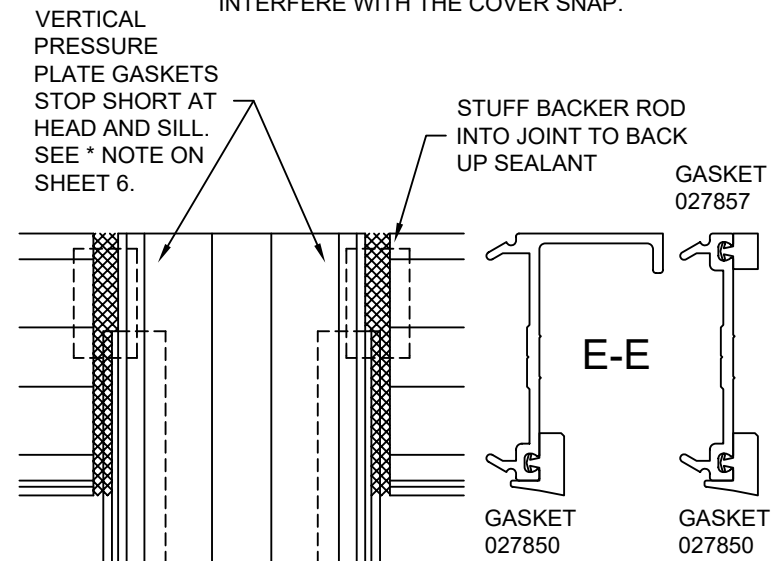
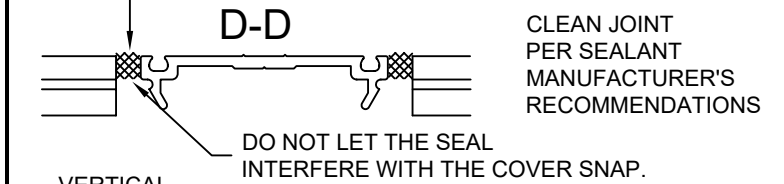
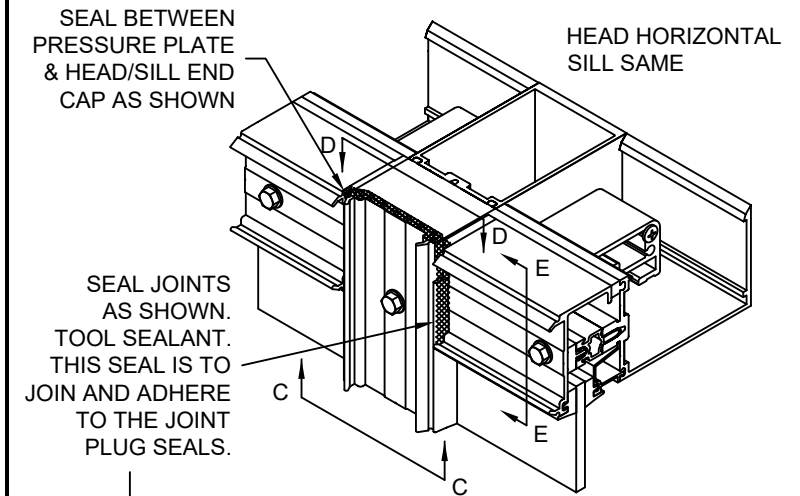


THERMAL POCKET FILLER HEAD HORIZONTAL SILL SAME

SEAL JOINTS AS SHOWN. TOOL SEALANT. THIS SEAL IS TO JOIN AND ADHERE TO THE JOINT PLUG SEALS.



Laws and building and safety codes governing the design and use of Kawneer products, such as glazed entrance, window, and curtain wall products, vary widely. Kawneer does not control the selection of product configurations, operating hardware, or glazing materials, and assumes no responsibility therefor. It is the responsibility of the owner, the specifier, the architect, the general contractor, and the installer and the fabricator/transformer, consistent with their roles, to determine the appropriate materials for a project in strict conformity to all applicable national, regional and local building codes and regulations. Kawneer reserves the right to change configuration without prior notice when deemed necessary for product improvement. © 2011, Kawneer Company, Inc.



1600UT SYSTEM 1  
INSTALLATION  
INSTRUCTIONS

Product Engineering & Development

97904-228  
03/10/22

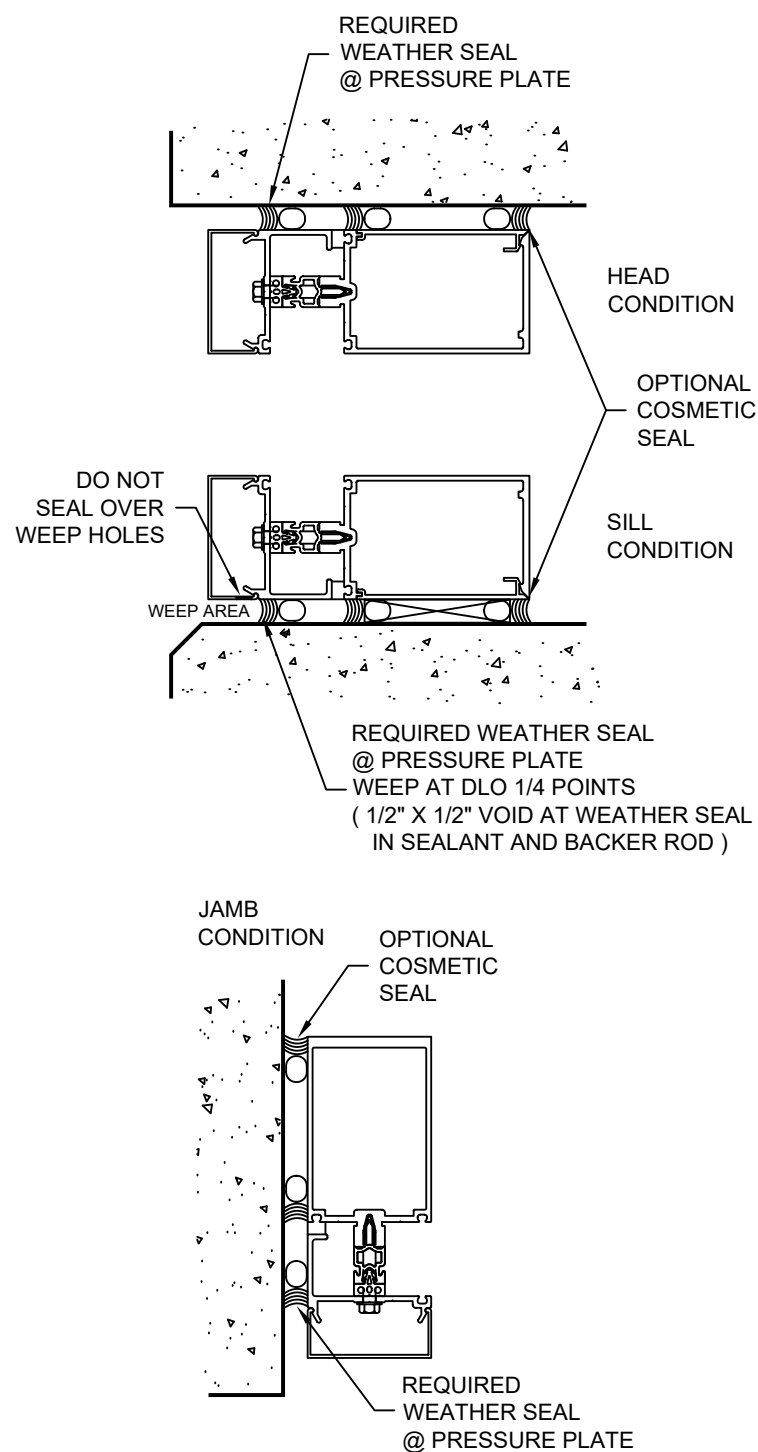


**STEP - 19 INSTALL PERIMETER WEATHER SEALS**

PERIMETER WEATHER SEALS TO BE INSTALLED AT PRESSURE PLATE.

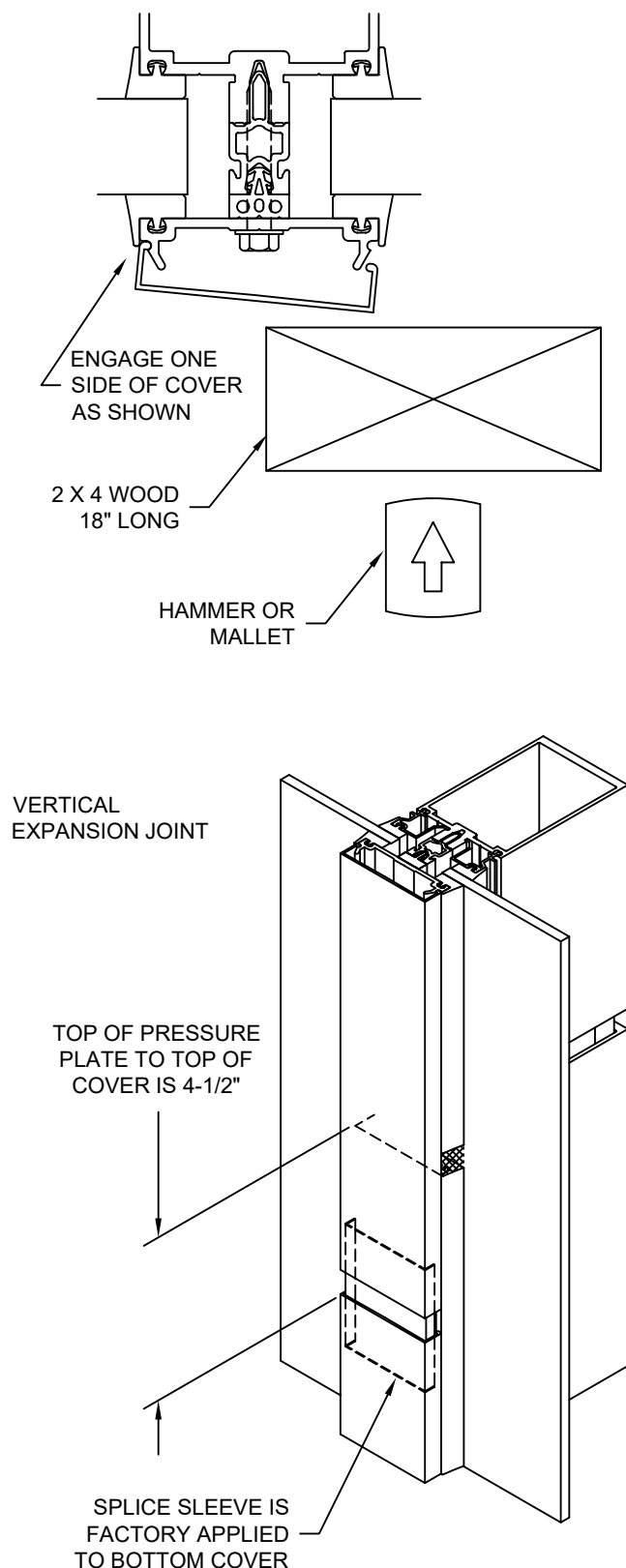
PRESSURE PLATE SEALS SHOULD BE INSTALLED BEFORE COVERS ARE APPLIED WHEN COVERS DEEPER THAN 3/4" ARE USED. SILL COVERS MUST REMAIN OPEN TO ALLOW WATER DRAINAGE TO THE EXTERIOR.

INSTALL SUITABLY SIZED BACKER ROD AND APPLY GENEROUS, CONTINUOUS BEAD OF SEALANT AS SHOWN.



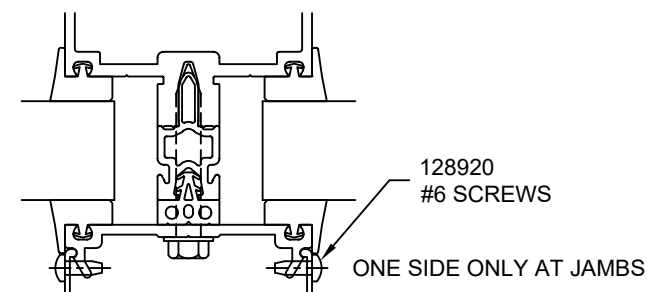
**STEP - 20 INSTALL EXTERIOR COVERS**

CARE MUST BE TAKEN TO AVOID DAMAGE TO COVERS DURING INSTALLATION. USE A 18" LONG PIECE OF 2 X 4 WOOD ALONG WITH A HAMMER OR Mallet TO SEAT THE COVER.



**STEP - 20 INSTALL EXTERIOR COVERS**

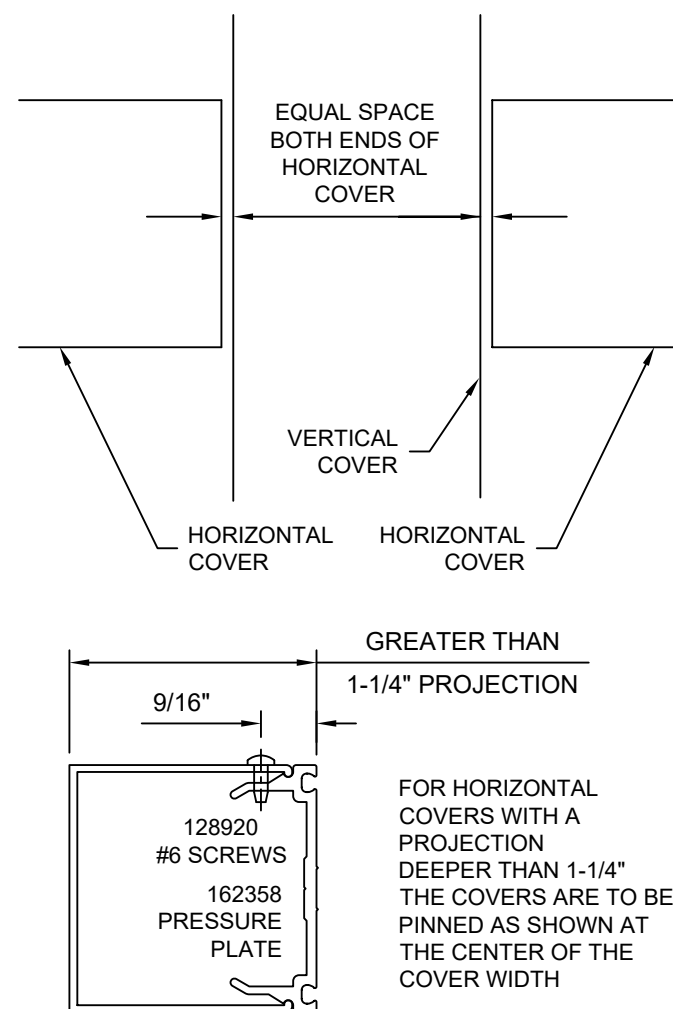
PINNING OF ALL VERTICAL COVERS IS REQUIRED FOR BOTH SIDES. DRILL A .106 DIA. HOLE (#36 DRILL) AND INSTALL 128920 SCREWS #6 X 3/8" PAN HEAD TYPE B. LOCATE PINNING AT A HORIZONTAL CLOSEST TO THE COVER HEIGHT CENTER.



**NOTE FOR 5" SIGHTLINE COVERS:**

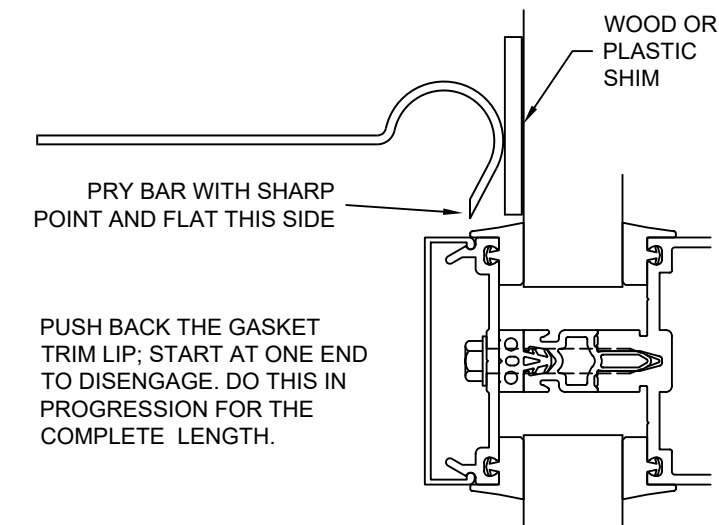
DUE TO LARGE EXTRUSION TOLERANCES, 5" SIGHTLINE COVERS MAY REQUIRE SEALANT OR PINNING TO HOLD IN PLACE.

INSTALL HORIZONTAL COVERS WITH THE WEEP HOLES DOWN



**REMOVING COVERS**

COVERS CAN BE SAVED IF TOLERANCES ARE NOT TOO TIGHT AND THE COVER IS REMOVED WITH EXTREME CARE.



1600UT SYSTEM 1  
INSTALLATION  
INSTRUCTIONS

Product Engineering & Development

97904-228  
03/10/22

171910 SHEET 09 OF 09